



UX8800 Quick Start Guide

This tech note will help you understand how to connect and communicate with EAW UX8800 Digital Signal Processor

Accessories that ship with your UX8800

- (1) CAT 5 Crossover cable 7 ft. (2.1m)
- (1) IEC Power cable 6 ft. (2m) with Nema 15-3 ac mains plug for 115V / 120V
- (1) IEC Power cable 6 ft. (2m) with Schuko type ac mains plug for 220V / 240V

If any of these items were not included in your package please contact EAW at 1-800-992-5013

Table of Contents

1. Please read the manual
2. Downloading the latest version of EAWPilot control software and UX8800 Greyboxes from the EAW website
3. Setting up network IP addresses
4. Verify firmware version and update if needed using EAWManager
5. Connecting your UX8800 to EAW Pilot control software

1. Please read the manual

The UX8800 manual can be found at http://eaw.com/docs/3_Manuals/. Inside the manual you will find all the specifics of UX8800, how it works, and how to connect with the UX8800. A thorough review of the manual will provide an overview of the UX8800.

2. Download the latest version of EAW Pilot control software and Greyboxes from the EAW website.

The latest version of EAWPilot and Greyboxes can be found at www.eaw.com/software. The latest version of any of our software and Greyboxes are always available on the EAW website.

After downloading the zipped EAWPilot and Greybox files from the website, save them to your desktop, extract them, and run the installers.

Software will automatically be installed in C:\program files\EAW\EAWPilot or C:\program files(x86)\EAW\EAWPilot and Greyboxes will automatically be installed in C:\program files\EAW\Data\UX8800 or C:\program files(x86)\EAW\Data\UX8800.

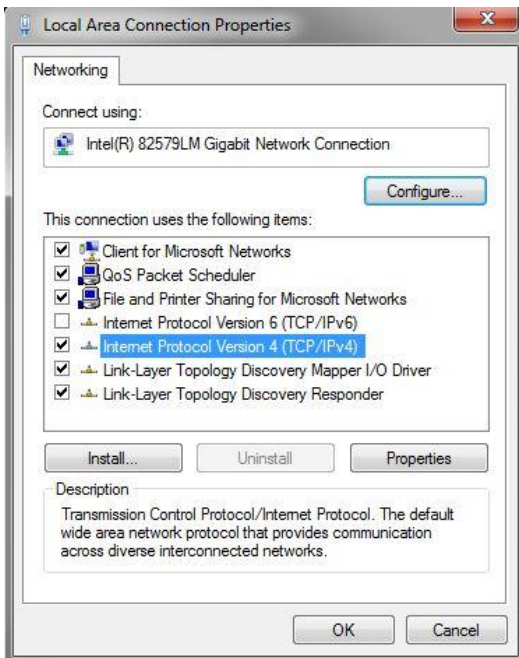


Do not change these directories. The installation process of EAW Pilot will create a shortcut icon on your desktop.

3. Setting up network IP addresses

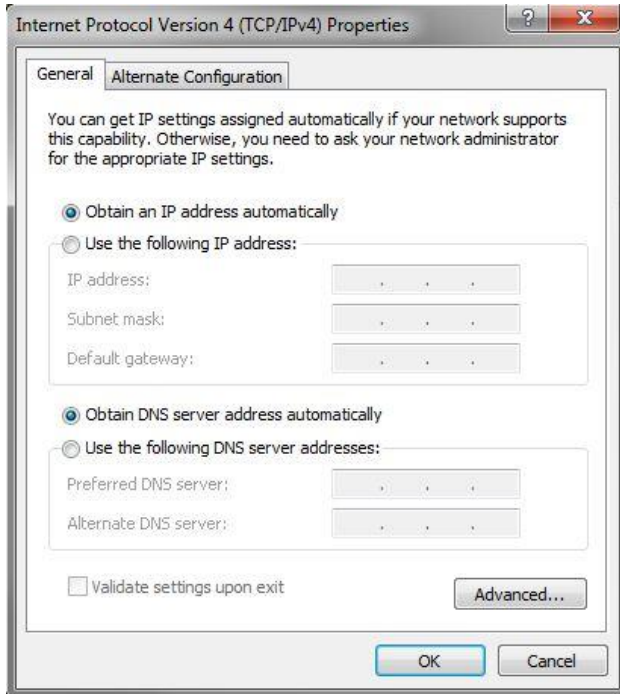
Go to **Start > Control Panel** then select **Network and Internet Connections > Network Connections**

Or on Windows 7: **Network and Internet > Network Sharing Center**



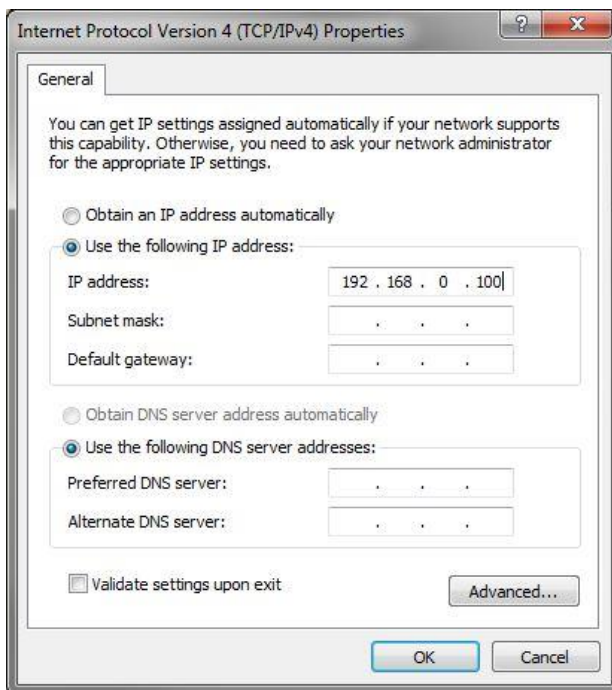
Click on **Local Area Connection** and select **Properties**

Select **Internet protocol v4 [TCP/IP]** and then click **Properties**



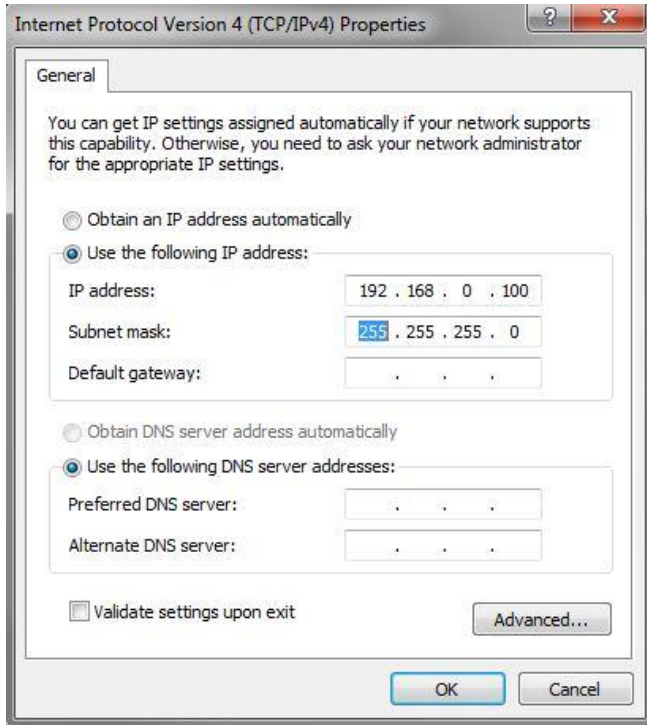
Select **Use the following IP address**

Type in the following address into the IP address field: **IP: 192.168.0.100**





Press the tab key and your subnet mask will automatically populate. **Subnet Mask: 255.255.255.0**



Click **Ok**

Now that we have set the static IP address in your computer we need to verify and set up the IP address in your UX8800

Setting the IP address in UX8800

- On the front panel of your UX8800 select the UTIL button
- Scroll down using the jog wheel and select IP address
- Press in on the jog wheel to access the IP settings
- Scrolling the jog wheel set the IP address to static
- Press down on the jog wheel and set IP address to **192.168.0.24**
- When finished press in on the jog wheel



4. Verify UX8800 firmware version and update if needed by EAW Manager

EAWManager is downloaded when you download EAWPilot. A shortcut will be created for EAWManager when EAWPilot was installed. To ensure optimal performance EAW strongly recommends you use the latest version of EAW Pilot and Firmware.

To check the firmware version currently installed on your UX8800 you will need to access the UTIL settings via the front panel controls of the UX8800. Use the jog wheel to scroll through the UTIL menu and select **About...** by pressing in on the jog wheel. The firmware version will be displayed. Check this against the latest version posted within EAWPilot and EAWManager.

Open EAWManager, Select **Tool > Communications**. Select the **Ethernet** option and input an address of **192.168.0.24** in the IP address field. Select **OK**

Click on the **Connect** button. If your UX8800 connects the Comm. Status will read Connected. If the Comm. Status says Not Connected you will need to follow step 3 to set up a static IP address on your computer as well as in your UX8800.

After you have established connection in EAWManager, select "UX8800" in the **Product** window. This should automatically populate the FIRMWARE window with the latest version of firmware. If not, click the **Browse** button, this will direct you to your UX8800 data folder. Select the latest OS and click **Open**.

Once you have selected this file click **Update**. A window will pop up reading "Updating the firmware will clear all Greyboxes and program storage. Do you want to continue?"

By selecting yes the memory of the UX8800 will be cleared of all saved programming. Click **Yes**.

EAWManager will now update the UX8800 to the OS file you have selected. Once it is finished updating the front panel will say "Update Complete". This process could take up to 10 minutes.

5. Connecting your UX8800 to EAWPilot control software

To connect to EAWPilot use the CAT 5 crossover cable that was provided in the box with your UX8800. Connect the crossover Ethernet cable into the port on the front of your UX8800 labeled **Ethernet**.

Connect the other end to your PC/Laptop Ethernet port. Open EAWPilot and click the **Go Online** button. The online button will light up and an icon of your UX8800 will appear in the right column under the found devices tab. When EAWPilot is establishing connection with your UX8800 you will see a spinning arrow icon. When connection is established this will turn into a green check mark. If



this check mark is red you will need to go back and verify steps 3 and 4. Click and drag the UX8800 icon to the design column located to the left of the found devices tab. You can now access your UX8800 by double clicking the icon in the design column.

If you have any further questions on connection or operation of the UX3600 or EAW Pilot software, contact the EAW Application Support Group at 1-800-992-5013 or asg@eaw.com