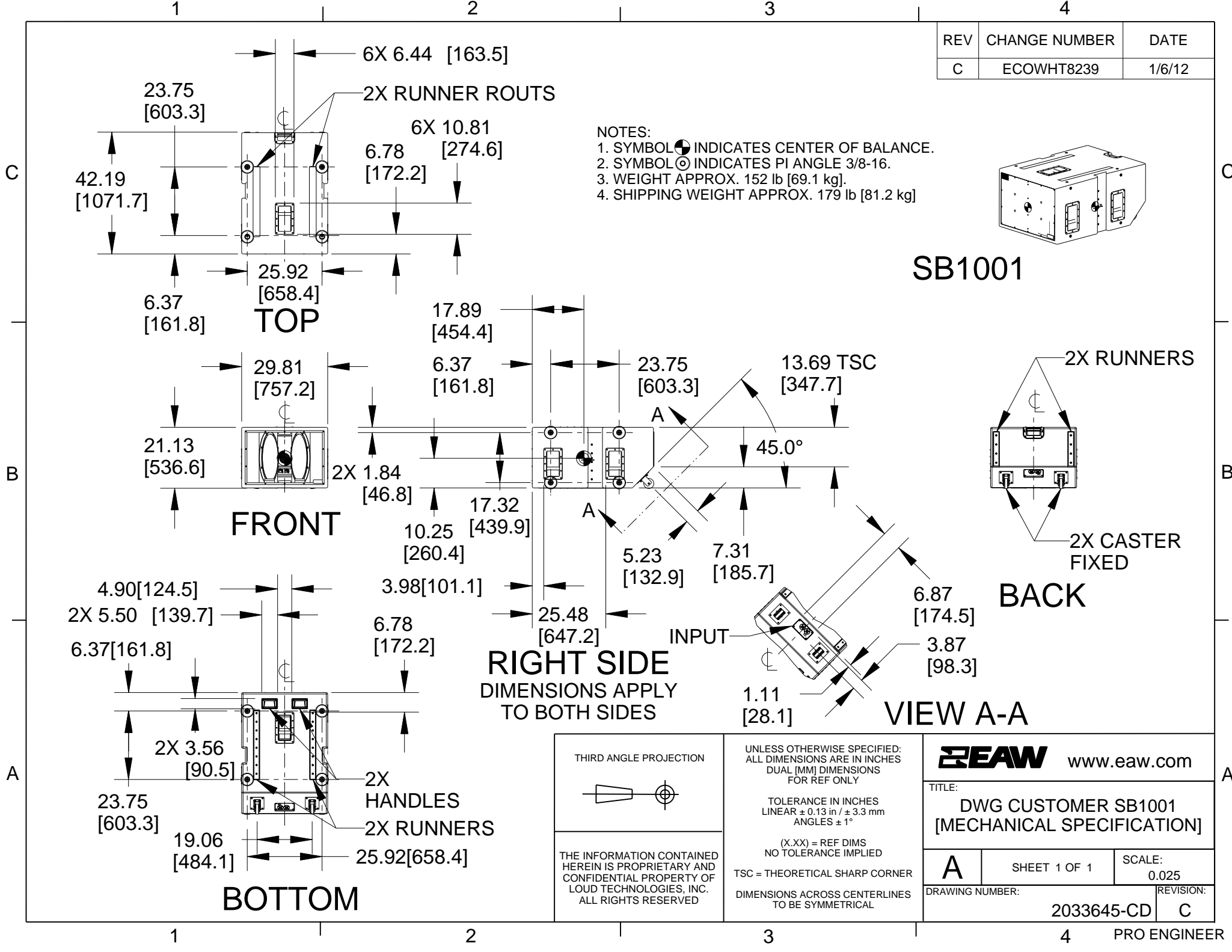


REV	CHANGE NUMBER	DATE
C	ECOWHT8239	1/6/12



- NOTES:
1. SYMBOL INDICATES CENTER OF BALANCE.
  2. SYMBOL INDICATES PI ANGLE 3/8-16.
  3. WEIGHT APPROX. 152 lb [69.1 kg].
  4. SHIPPING WEIGHT APPROX. 179 lb [81.2 kg]

<p>THIRD ANGLE PROJECTION</p>	<p>UNLESS OTHERWISE SPECIFIED: ALL DIMENSIONS ARE IN INCHES DUAL [MM] DIMENSIONS FOR REF ONLY</p> <p>TOLERANCE IN INCHES LINEAR ± 0.13 in / ± 3.3 mm ANGLES ± 1°</p> <p>(X.XX) = REF DIMS NO TOLERANCE IMPLIED</p> <p>TSC = THEORETICAL SHARP CORNER</p> <p>DIMENSIONS ACROSS CENTERLINES TO BE SYMMETRICAL</p>	<p><b>EAW</b> www.eaw.com</p>	
		<p>TITLE: <b>DWG CUSTOMER SB1001</b> <b>[MECHANICAL SPECIFICATION]</b></p>	
<p>THE INFORMATION CONTAINED HEREIN IS PROPRIETARY AND CONFIDENTIAL PROPERTY OF LOUD TECHNOLOGIES, INC. ALL RIGHTS RESERVED</p>	<p>A SHEET 1 OF 1 SCALE: 0.025</p>		<p>REVISION: C</p>
	<p>DRAWING NUMBER: 2033645-CD</p>		<p>PRO ENGINEER</p>