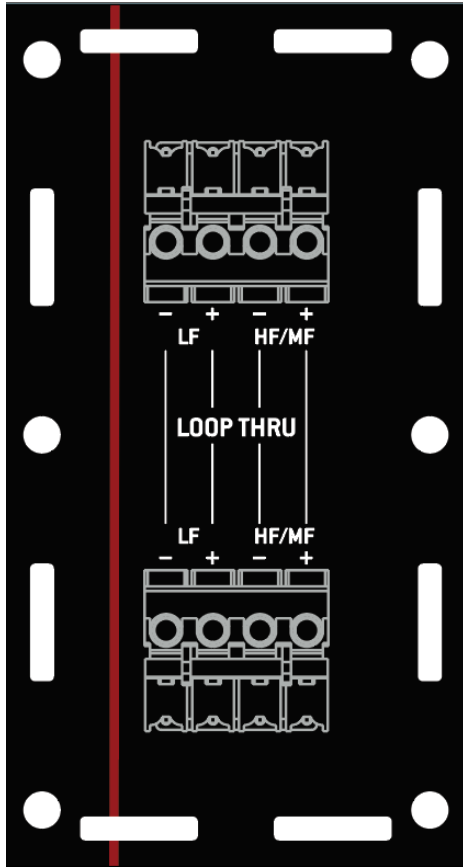


## ***KF810P SB818P-F Configuration Guide***

## Table of Contents

KF810P Input Connections .....	2
Loop or Thru Connector.....	2
SB818P F Input Connections .....	2
Recommended Amplifier Configuration for KF810P .....	3
Recommended Amplifier Configuration for SB818P F.....	4
Configuration Examples .....	5
8x KF810P with 4x ground-stacked SB818P F .....	5
8x KF810P with 4x flown SB818P F .....	5
16x KF810P with 8x ground-stacked SB818P F .....	6
Contact.....	7



### KF810P Input Connections

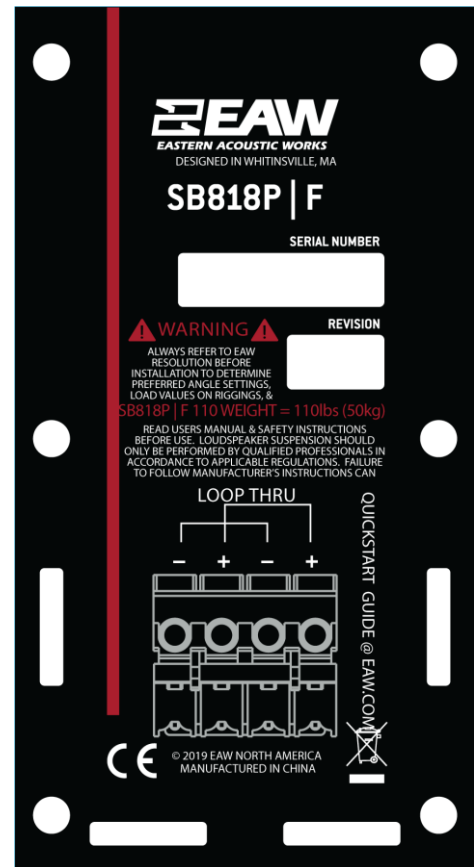
There are two Phoenix connectors on the rear of the KF810. Use one for input, and the other to loop through to other units in the system.

### Loop or Thru Connector

Use this connector to "daisy-chain" the input signal to multiple loudspeakers. For terminal block connections, use multiple wires to each terminal for daisy-chaining.

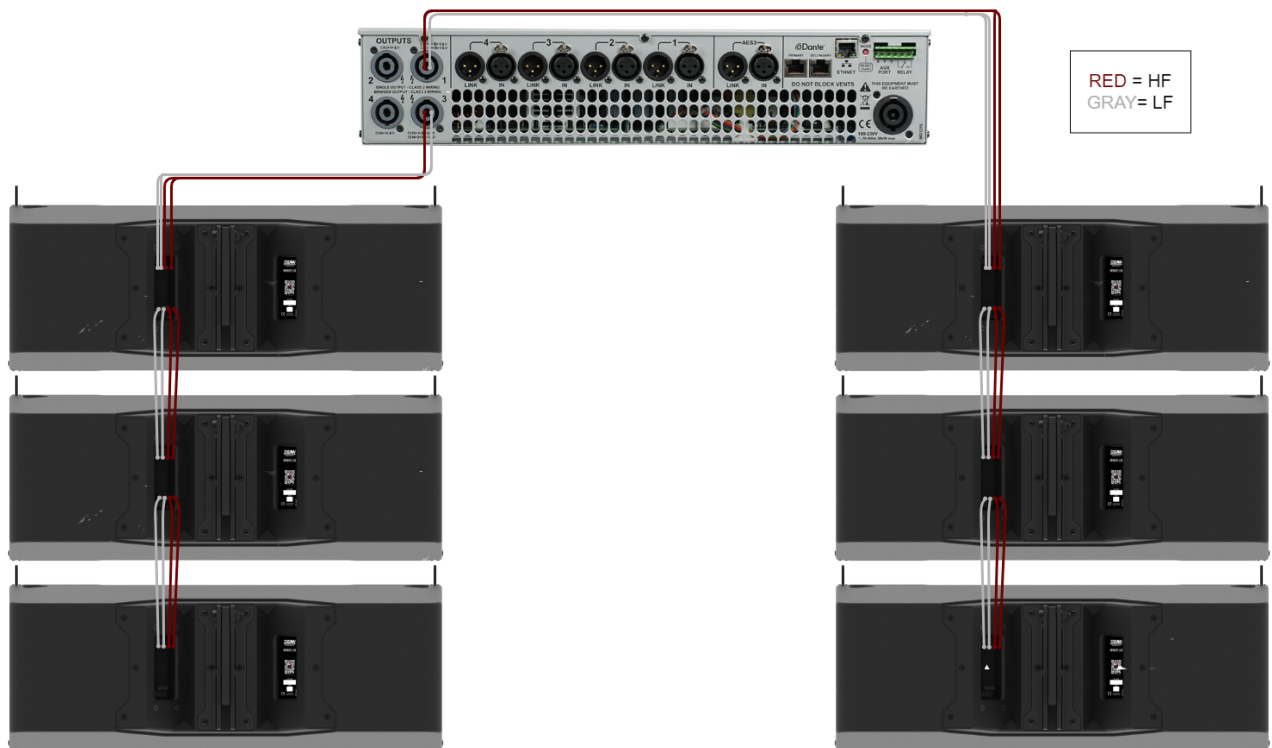
### SB818P|F Input Connections

There are two Phoenix connectors on the rear of the SB818. Use one for input, and the other to loop through to other units in the system.



Recommended Amplifier Configuration for KF810P

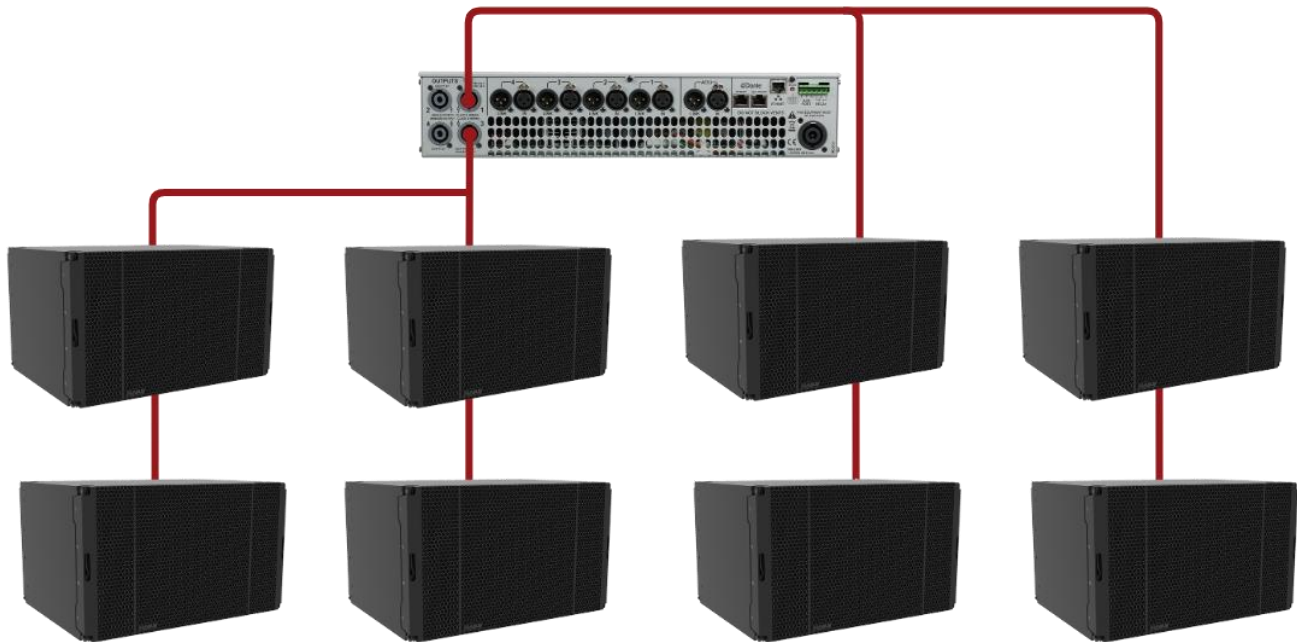
MODEL	PER CHANNEL	PER AMPLIFIER
<b>UXA4810</b>	1	4
<b>UXA4406</b>	2	4
<b>UXA4410</b>	3	6



*UXA4410 Configuration is recommended: Zoom in to view image details.*

Recommended Amplifier Configuration for SB818P|F

MODEL	PER CHANNEL	PER AMPLIFIER
<b>UXA4810</b>	Not Recommended	
<b>UXA4406</b>	1	4
<b>UXA4410</b>	2	8



*UXA4410 Configuration is recommended: Zoom in to view image details.*

## Configuration Examples

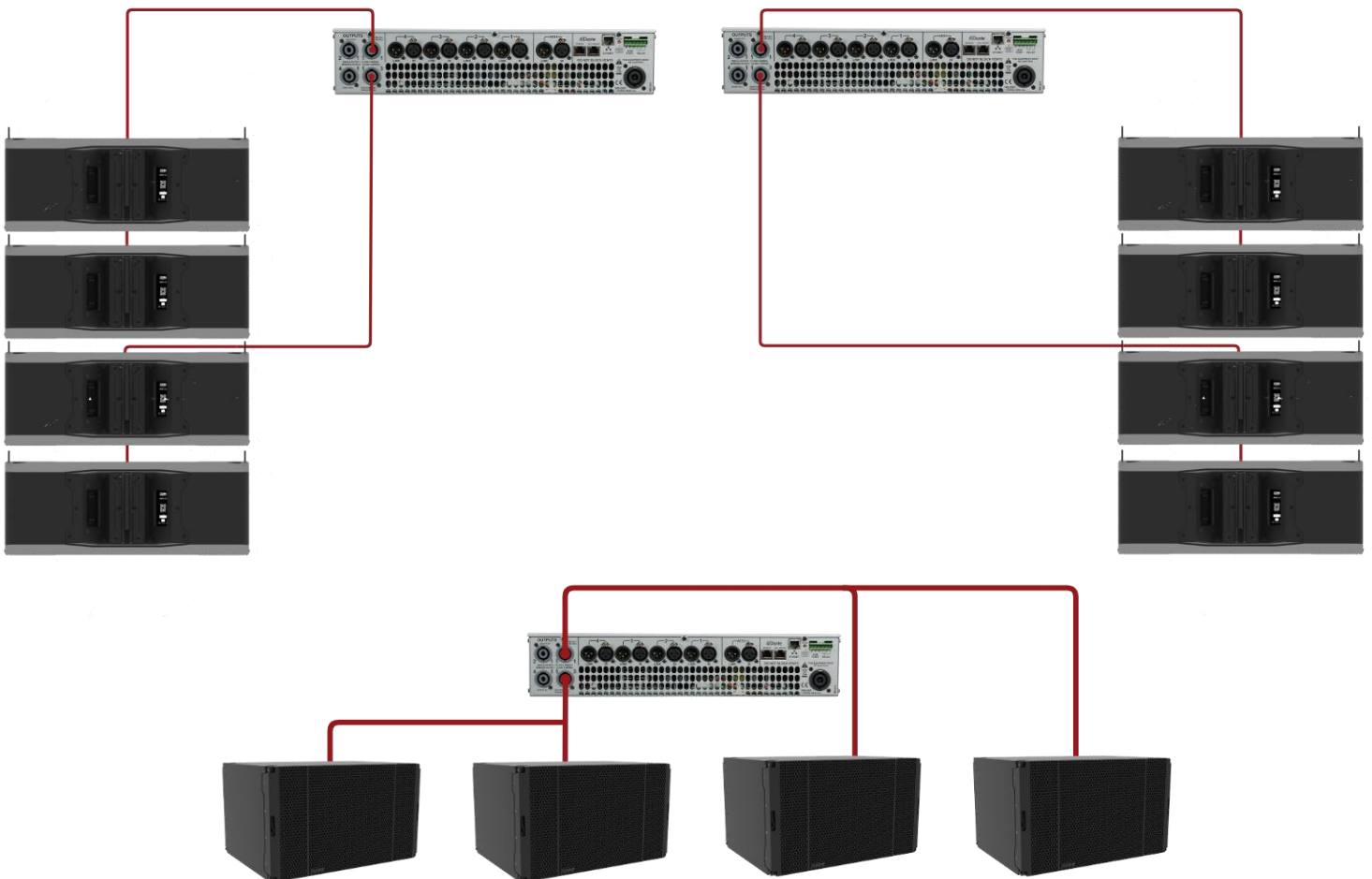
### 8x KF810P with 4x ground-stacked SB818P|F

- (2) arrays of (4) KF810P each, powered by (3) UXA4406.
- (3) 30A circuits to power (3) UXA4406 amplifiers
- (2) KF810P | Fly bar

**OR**

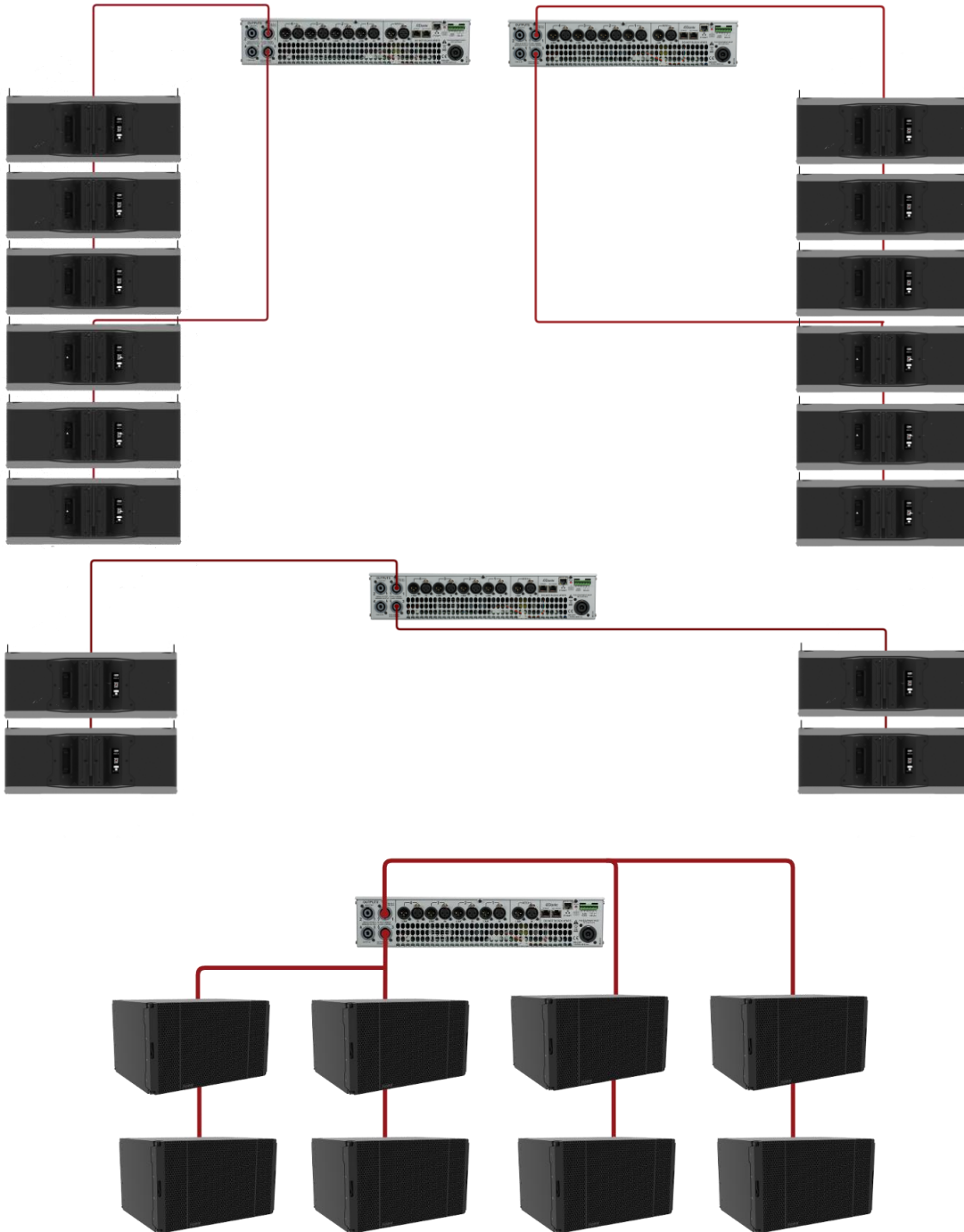
### 8x KF810P with 4x flown SB818P|F

- (2) arrays of (4) KF810P each, powered by (3) UXA4406.
- (3) 30A circuits to power (3) UXA4406 amplifiers
- (2) KF810P | Fly bar
- (2) KF810P | Adapter Bar



16x KF810P with 8x ground-stacked SB818P|F

- (2) arrays of (8) KF810P each, powered by (4) UXA4410.
- (4) 30A circuits to power (4) UXA4410 amplifiers
- (2) KF810P | Fly bar



## Contact

Have questions? Contact our Application Engineering team.

508-234-5168

800-992-5013 (toll-free)

[design@eaw.com](mailto:design@eaw.com)

Need service? Our service team can help.

508-234-5168

800-992-5013 (toll-free)

[parts@eaw.com](mailto:parts@eaw.com)





**EAW**<sup>®</sup>

**Eastern Acoustic Works**

One Main Street | Whitinsville, MA 01588 | USA

tel 800 992 5013 / +1 508 234 6158

[www.eaw.com](http://www.eaw.com)

©2019 Eastern Acoustic Works

All rights reserved. Products are not drawn to scale.

All terms, conditions, and specifications subject to change without notice.