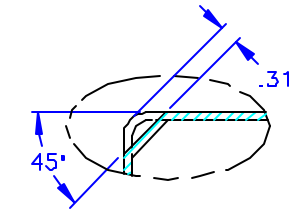
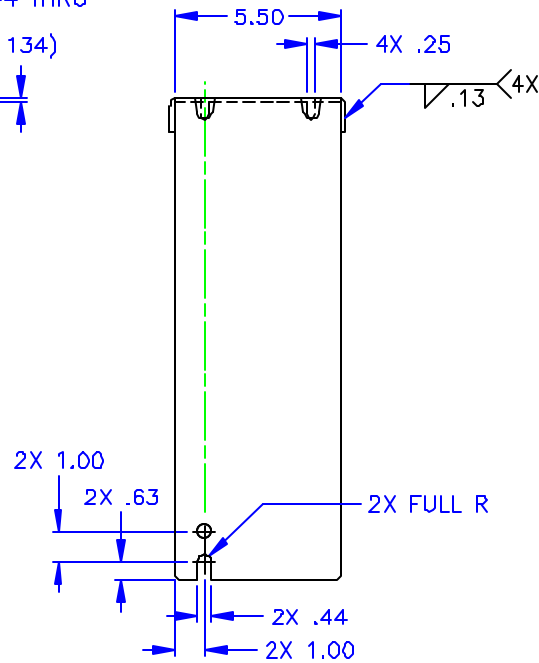
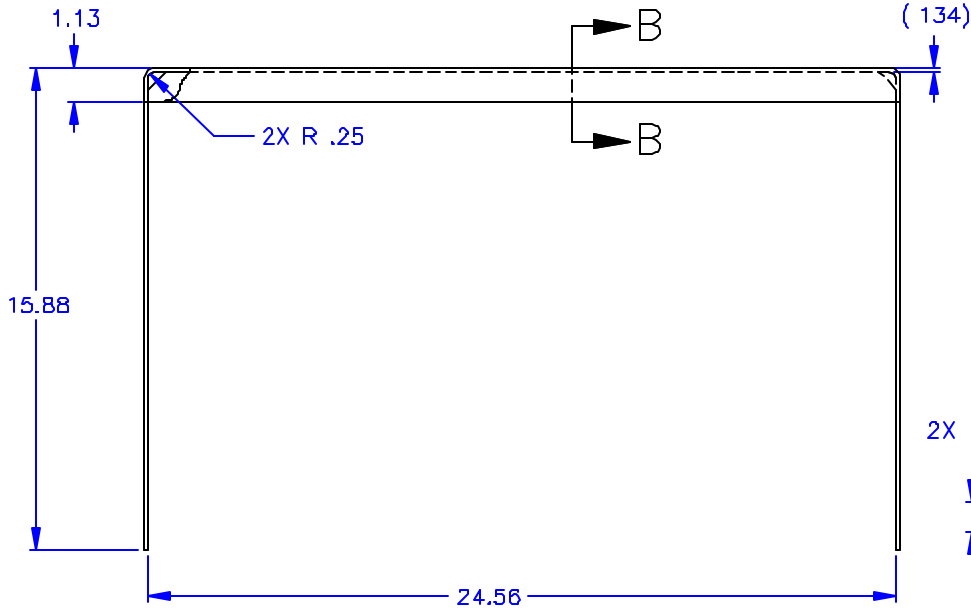
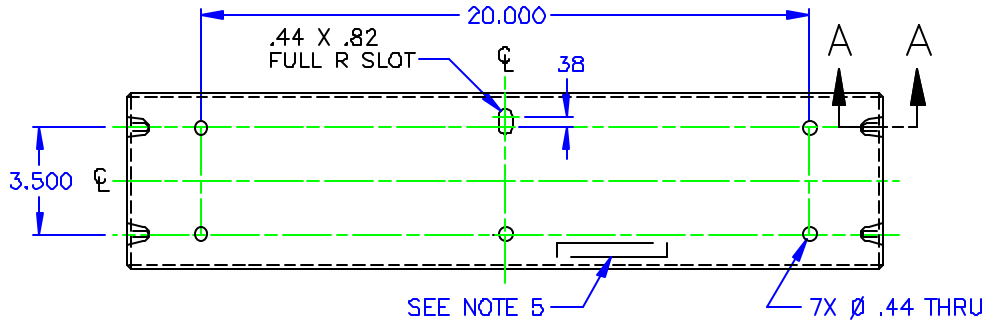


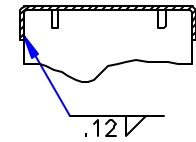
REV	DESCRIPTION	APVD/DATE
0	NEW ISSUE WAS 606098 (0) PER DSR 00-431 MFL 4/11/00	DM 4/26/00

NOTES:

1. MATERIAL: 10 GA (.134) CRS
2. FINISH: BLACK MATTE POWDERCOAT.
3. REMOVE BURRS AND SHARP EDGES.
4. PARTS TO BE CLEANED AND FREE OF GREASE AND DEBRIS.
5. EAW PART NUMBER AND CURRENT REVISION TO BE STAMPED OR PRINTED IN AREA SHOWN WITH INDELIBLE WHITE INK.
6. REFER TO EAW MATERIAL SPECIFICATION 480455 FOR LABELING AND SHIPPING REQUIREMENTS.



SECTION A-A



SECTION B-B

DOCUMENT CONTROL PER SPECIFICATION 4-201

THIRD ANGLE PROJECTION 	UNLESS OTHERWISE SPECIFIED ALL DIMENSIONS ARE IN INCHES TOLERANCE IN INCHES X ± .1 XX ± .03 XXX ± .010 FRACTIONS ± 1/32 ANGLES ± 1/3° (XXX) = REF DIMS NO TOLERANCE IMPLIED T.S.C = THEORETICAL SHARP CORNER DIMENSIONS ACROSS CENTERLINES TO BE SYMMETRICAL	STATUS: PRODUCTION		EASTERN ACOUSTIC WORKS ONE MAIN STREET WINTONVILLE, VA 01688 USA
		APPROVALS DRAWN: NFL CHECKED: DM DES ENG: JR MFG ENG: MCB	DATE 4/11/00 4/26/00 4/27/00 4/28/00	
THIS DRAWING IS THE PROPERTY OF EAW AND SHALL NOT BE COPIED, REPRODUCED, OR USED AS THE BASIS FOR MANUFACTURE OR SALE OF APPROVALS WITHOUT SYSTEM AUTHORIZATION. DO NOT SCALE DRAWING.			SHEET 1 OF 1 SCALE: 1 TO 4	
			DRAWING NUMBER: 606156 REVISION: 1	