

## APPLICATION

- For medium to very large cinemas
- Passive 2-way surround channel loudspeaker
- High output, full range response

## PRODUCT INFORMATION

The CR58 two-way, passive, full range cinema surround loudspeaker system is engineered to reproduce today's stereo full bandwidth digital surround tracks from wall mounted positions high above the audience. It features a 15-in woofer and a 1-in exit compression driver loaded with a wide dispersion constant directivity horn.

The CR58 is specifically engineered to cover a larger seating area with higher quality, higher output sound than traditional cinema surrounds. With 500 Watts AES standard power handling and a 90°x70° coverage pattern, it can be mounted higher and cover more seats than traditional surrounds. Higher placement lets the systems cover a larger area "across" the room creating a larger area of stereo surround coverage than traditional surround placement. The system produces 8 - 15 dB more output than traditional surrounds.

The front baffle is angled down 20° to accommodate overhead mounting. The optimally vented enclosure increases LF response while limiting driver excursion. This method produces less distortion and minimizes driver strain while extending LF response to the lowest octaves.

Six threaded mounting points on top of the enclosure allow the system to be "dead hung" at a variety of vertical and horizontal angles. Two mounting points (at the center of gravity on each side) accept an adjustable wall mount bracket. Two additional mounting points (one at the upper rear corner of each side) provide additional mounting flexibility. A single mounting point on the bottom accepts an L-bracket.

The passive crossover/filter network included in the CR58 is so complex that it goes beyond merely dividing the signal and actually performs critical equalization functions. This means it will provide more detailed, more natural reproduction of any sonic event occurring in the 360° aural arena.

The input connector - a 2-terminal barrier strip that accommodates bare wire, tinned leads or spade lugs - is located on top of the enclosure. The enclosure features a textured black finish to eliminate visual intrusion of visible surrounds. For safety, the cloth grille is attached with multiple threaded fasteners.

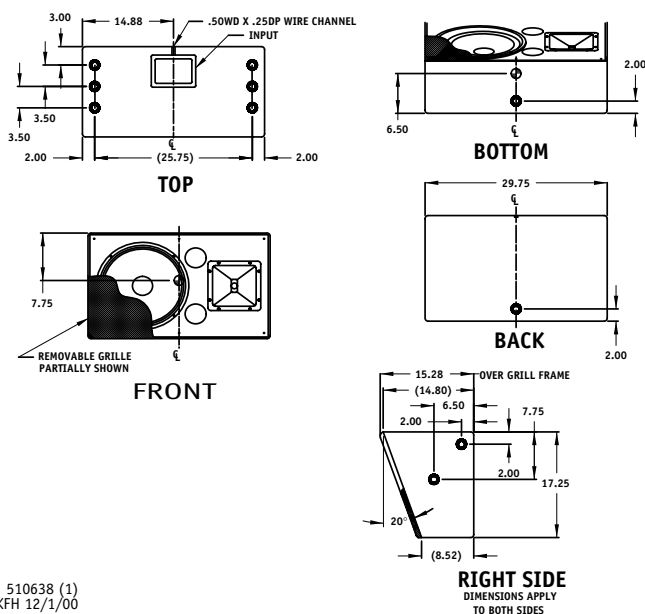


## DESCRIPTIVE DATA

Part Number	999684	
LF Subsystem & Loading	1x15-in vented	
HF Subsystem & Loading	1x1-in exit compression driver on 90 x 70 CD horn	
Configuration	2-way, full range	
Powering Mode	Passive	
Cabinet Type (shape)	Rectangular, w/slanted baffle (20°)	
Enclosure Materials	3/4-in Medium Density Fiberboard	
Finish	Textured black	
Connectors	2 terminal barrier strip	
Suspension Hardware	(11) 3/8-16 threaded inserts	
Grille	Black cloth	
Dimensions	inches	millimeters
	Height	17.25 438
	Width	29.75 756
	Depth (Top)	15.25 387
Weights	Depth (Bottom)	10.5 267
	pounds	kilograms
	Net Weight (approx)	56 25.5
Shipping Weight (approx)	64	29.1

## CR58

- ⊙ INDICATES 3/8-16 THREADED MOUNTING HOLE
- ⊖ INDICATES 5/16-18 THREADED MOUNTING HOLE
- ⊕ INDICATES CENTER OF BALANCE



## COMPONENTS & CONSTRUCTION

The CR58 two-way, full range cinema surround loudspeaker system employs one 15-in cone transducer mounted in an optimally vented enclosure and one 1-in exit, titanium diaphragm compression driver mounted to a 90°x70° dispersion pattern constant directivity horn. The LF and HF sections are integrated with a complex, multicomponent, passive crossover/filter network.

The enclosure is constructed of 3/4-in thickness Medium Density Fiberboard (MDF). Extensive internal bracing is employed to minimize panel resonances resulting from the large acoustical energies generated within the enclosure while maximizing acoustical energy transfer into the audience area. A total of eleven 3/8"-16 threaded mounting points facilitate a wide variety of mounting option.

The input connector, located on the top of the enclosure, is a two-terminal barrier strip designed to accommodate bare wire, tinned leads or spade lugs. For safety, the grille is attached with multiple threaded fasteners.

## COMPONENTS & CONSTRUCTION continued

All external components feature a textured, non-reflective, black finish.

## NOMINAL DATA

### Frequency Response (1 Watt @ 1m)

+3 dB 50 Hz - 18 kHz

### Axial Sensitivity (dB SPL, 1 Watt @ 1m)

Full Range 98

### Impedance (Ohms)

Full Range 8

### Power Handling, AES Standard (Watts)

Full Range 500

### Calculated Maximum Output (dB SPL @ 1m)

Full Range Peak 131.0

Full Range Long Term 125.0

### Nominal Coverage Angle/-6 dB points (degrees)

Horizontal 90

Vertical 70