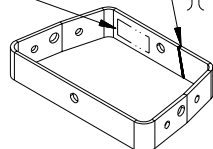


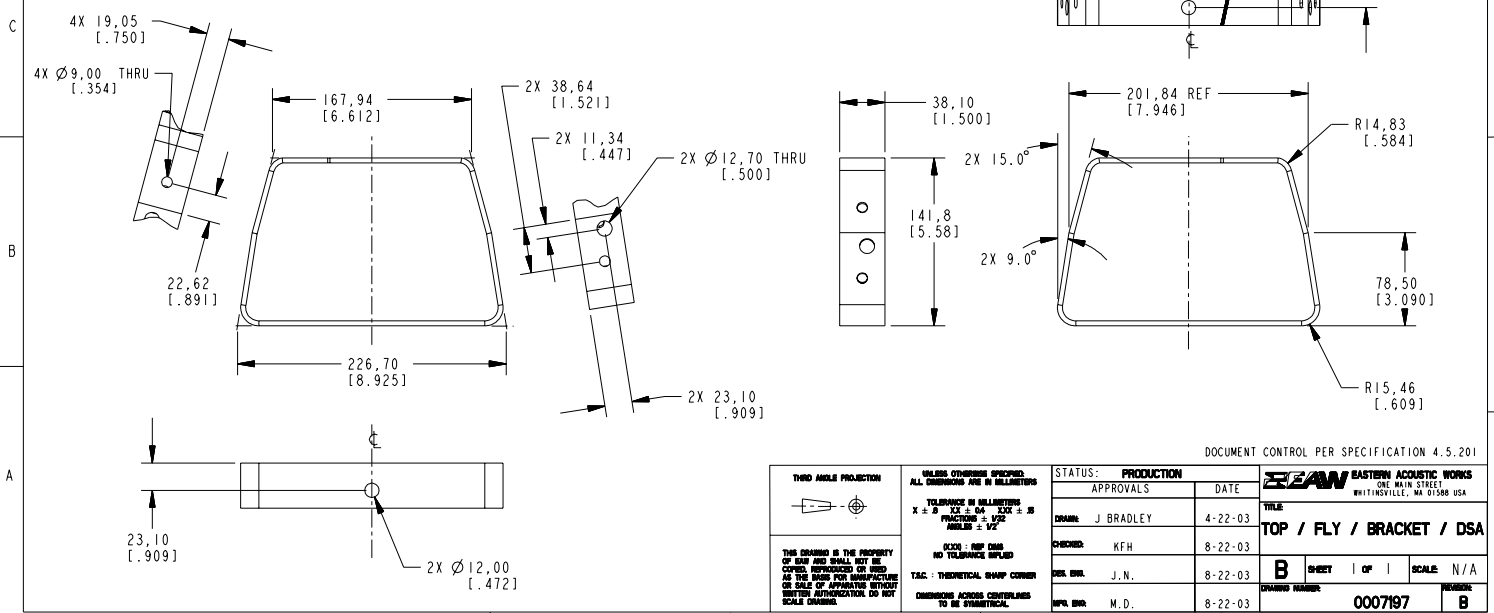
NOTES:
 1. MATERIAL: . 7 GA (1793 THK.) CRS
 2. FINISH: MORTON CORVEL 41-1003 LINEAR WHITE POWDERCOAT
 3. REMOVE BURRS AND SHARP EDGES.
 4. PARTS TO BE CLEAN AND FREE OF GREASE AND DEBRIS.
 5. EAW PART NUMBER AND CURRENT REVISION TO BE STAMPED, LABELED, OR PERMANENTLY MARKED WHERE SHOWN IN A CONTRASTING COLOR. LETTERS TO BE 1/8" TALL MINIMUM.
 6. REFER TO EAW MATERIAL SPECIFICATION 480455 FOR LABELING AND SHIPPING REQUIREMENTS.
 7. DIMENSIONS IN BRACKETS ARE IN [INCHES]
 8. ALL DIMENSIONS ARE PRIOR TO POWDERCOATING

SEE NOTE 5



SCALE 0.25:1

REV	DESCRIPTION	APVD/DATE
A	RELEASE TO PRODUCTION PER DSRWHT3774 JAB 8-18-03	J.N. 8-20-03 KFH 8-20-03
B	REMOVED Ø7.00 & 2X Ø9.05 FROM AUXILIARY VIEW. 4X 19.05 WAS 2X 19.05 4X Ø9.00 WAS 2X Ø9.00 IN AUXILIARY VIEW 141.8 WAS 141.75, ADDED NOTE 8 PER ECOMHT3143 JAB 11-5-03	KFH 11-18-03 J.N. 11-19-03



DOCUMENT CONTROL PER SPECIFICATION 4.5.201

THIRD ANGLE PROJECTION 	UNLESS OTHERWISE SPECIFIED: ALL DIMENSIONS ARE IN MILLIMETERS TOLERANCES IN MILLIMETERS X ± 0.15 XX ± 0.10 XXX ± 0.05 FINISHES = 25µm ANGLES = 1/4° UNLESS OTHERWISE SPECIFIED T.A.C. : THEORETICAL SHARP CORNER DIMENSIONS ACROSS CENTERLINES TO BE SYMMETRICAL	STATUS: PRODUCTION		EASTERN ACOUSTIC WORKS ONE MAIN STREET WHITINSVILLE, MA 01588 USA
		APPROVALS	DATE	
THIS DRAWING IS THE PROPERTY OF EAW AND SHALL NOT BE COPIED, REPRODUCED OR USED AS THE BASIS FOR MANUFACTURE OR SALE OF APPARATUS WITHOUT WRITTEN AUTHORIZATION. DO NOT SCALE DRAWING.	UNLESS OTHERWISE SPECIFIED: ALL DIMENSIONS ARE IN MILLIMETERS TOLERANCES IN MILLIMETERS X ± 0.15 XX ± 0.10 XXX ± 0.05 FINISHES = 25µm ANGLES = 1/4° UNLESS OTHERWISE SPECIFIED T.A.C. : THEORETICAL SHARP CORNER DIMENSIONS ACROSS CENTERLINES TO BE SYMMETRICAL	DRAWN: J. BRADLEY CHECKED: KFH DES. ENR.: J.N. MFG. ENR.: M.D.	4-22-03 8-22-03 8-22-03 8-22-03	TOP / FLY / BRACKET / DSA B SHEET 1 OF 1 SCALE: N/A DRAWING NUMBER: 0007197 REVISION: B