

NOTES:

1. SYMBOL  INDICATES MOUNTING POINT, 3/8-16 THREADED HOLE (RIVNUT).

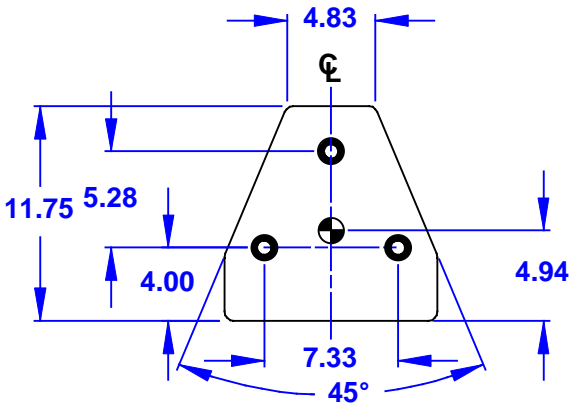
2. SYMBOL  INDICATES 5/16-18 T-NUT FOR OMNI MOUNT SERIES 100.

3. SYMBOL  INDICATES CENTER OF BALANCE.

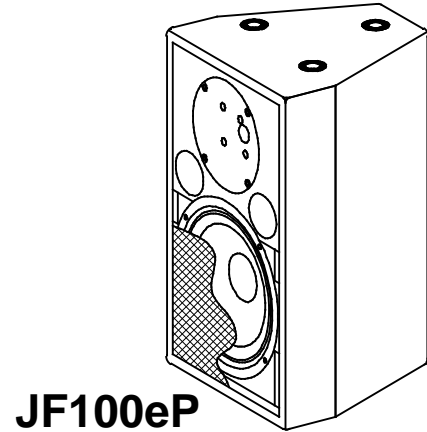
4. WEIGHT APPROX. 39 LBS.

5. SHIPPING WEIGHT APPROX. 44 LBS.

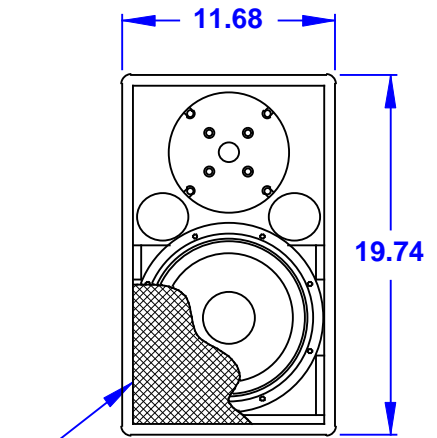
REV	DESCRIPTION	APVD/DATE
0	NEW ISSUE PER DSR #00-1459 DM 1/8/01	KFH 1/22/01



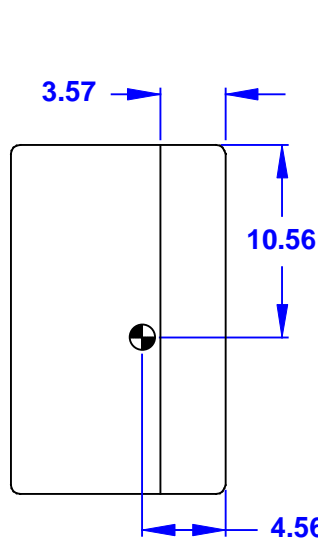
TOP
DIMENSIONS APPLY TO TOP & BOTTOM



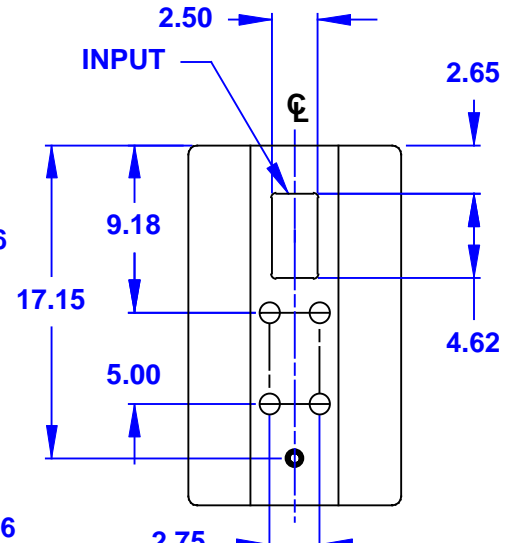
JF100eP



GRILLE PARTIALLY SHOWN
FRONT



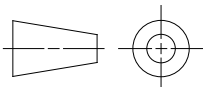
SIDES



BACK

DOCUMENT CONTROL PER SPECIFICATION 4.5.201

THIRD ANGLE PROJECTION



UNLESS OTHERWISE SPECIFIED:
ALL DIMENSIONS ARE IN INCHES

TOLERANCE IN INCHES
.XX ± .13
ANGLES ±1°

(X.XX) = REF DIMS
NO TOLERANCE IMPLIED

T.S.C.=THEORETICAL SHARP CORNER

DIMENSIONS ACROSS CENTERLINES
TO BE SYMMETRICAL

STATUS: **PRODUCTION**

APPROVALS DATE

DRAWN: DM 1/8/01

CHECKED: KFH 1/22/01

DES ENG: JAR 1/25/01

MFG ENG: MD 1/25/01

EAW EASTERN ACOUSTIC WORKS
ONE MAIN STREET
WHITINSVILLE, MA 01588 USA

TITLE:
CABINET/FINISHED/JF100eP
[MECHANICAL SPECIFICATION]

A SHEET 1 OF 1 SCALE: 1 TO 10

DRAWING NUMBER: 510783 REVISION: 0