


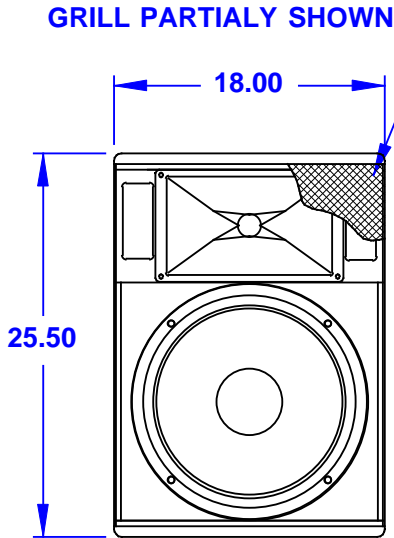


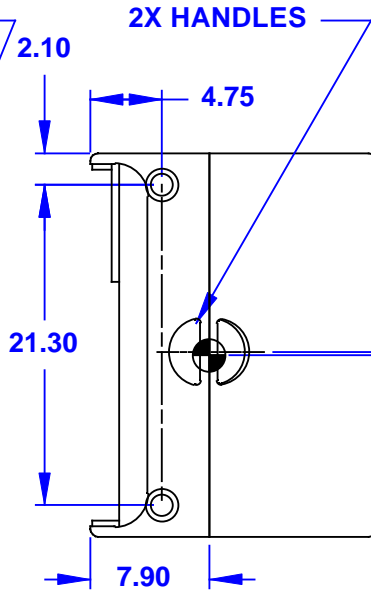
**NOTES:**

1. SYMBOL  INDICATES MOUNTING POINT, 3/8-16 THREADED HOLE.
2. SYMBOL  INDICATES 3.00 X 1.35 FLY TRACK.
3. SYMBOL  INDICATES CENTER OF BALANCE.
4. WEIGHT APPROX. 95 LBS.
5. SHIPPING WEIGHT APPROX. 103 LBS.

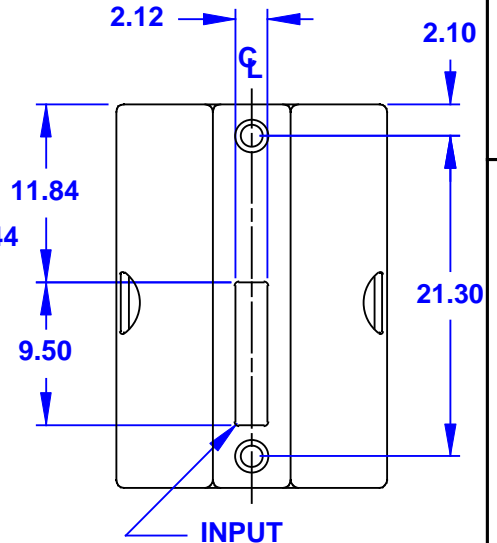
REV	DESCRIPTION	APVD/DATE
0	UPGRADE TO PRODUCTION FROM REV B. ADDED WEIGHT & CENTER OF BALANCE PER DSR #99-642 ML 5/18/99	RS 7/6/99



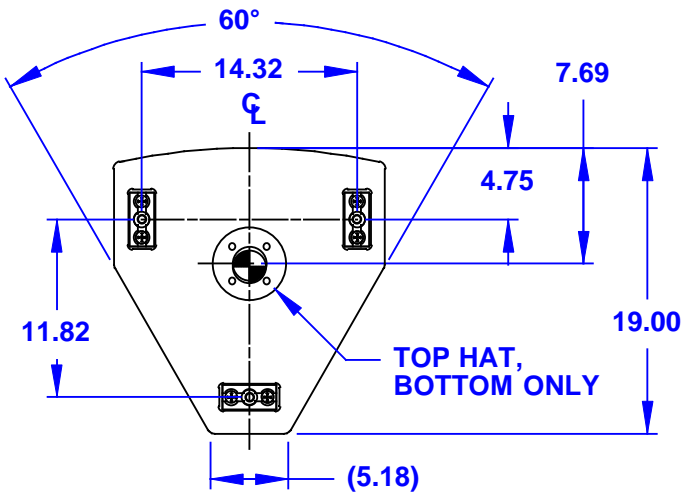
**FRONT**



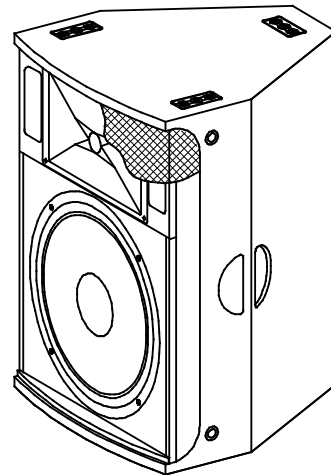
**RIGHT SIDES**  
DIMENSIONS APPLY TO BOTH SIDES



**BACK**

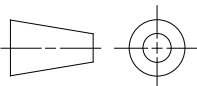


**TOP/BOTTOM**



**JF590z**

DOCUMENT CONTROL PER SPECIFICATION 4.5.201

<p>THIRD ANGLE PROJECTION</p> 	<p>UNLESS OTHERWISE SPECIFIED: ALL DIMENSIONS ARE IN INCHES</p> <p>TOLERANCE IN INCHES .XX ± .13 ANGLES ± 1°</p> <p>(X.XX) = REF DIMS NO TOLERANCE IMPLIED</p> <p>T.S.C.=THEORETICAL SHARP CORNER</p> <p>DIMENSIONS ACROSS CENTERLINES TO BE SYMMETRICAL</p>	<p>STATUS: <b>PRODUCTION</b></p>		<p><b>EA</b> EASTERN ACOUSTIC WORKS ONE MAIN STREET WHITINSVILLE, MA 01588 USA</p>	
		APPROVALS	DATE		<p>TITLE: CABINET/FINISHED/BLACK/ JF590z [MECHANICAL SPECIFICATION]</p>
		DRAWN: RAS	7/29/98		
		CHECKED: KFH	7/6/99		
DES ENG: ZC	7/6/99	<p><b>A</b> SHEET 1 OF 1</p>	<p>SCALE: 1 TO 12</p>		
MFG ENG: KRV	7/7/99			<p>DRAWING NUMBER: 510736</p>	<p>REVISION: 0</p>