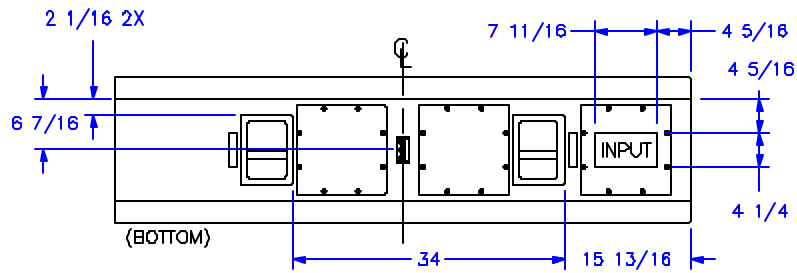
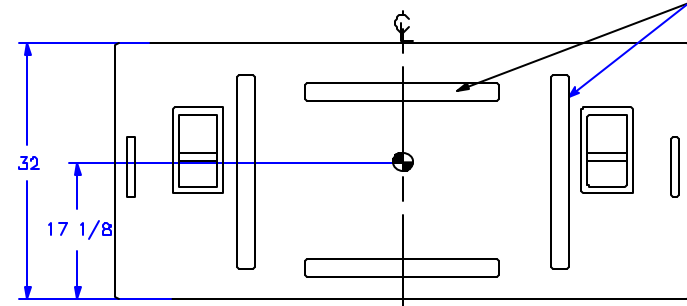


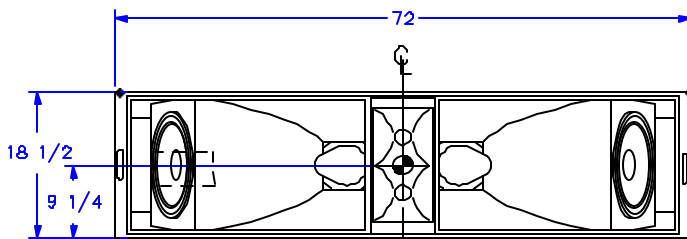
REV	ECO #	DATE	APPROVED
0	RELEASED	2/24/97	



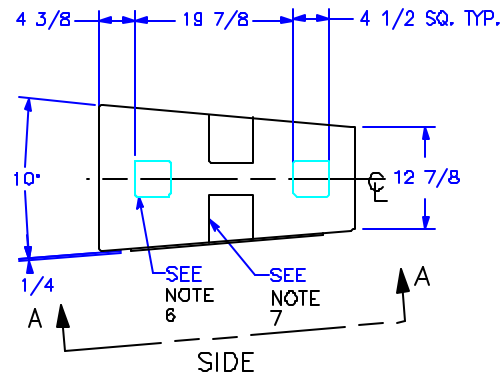
BACK



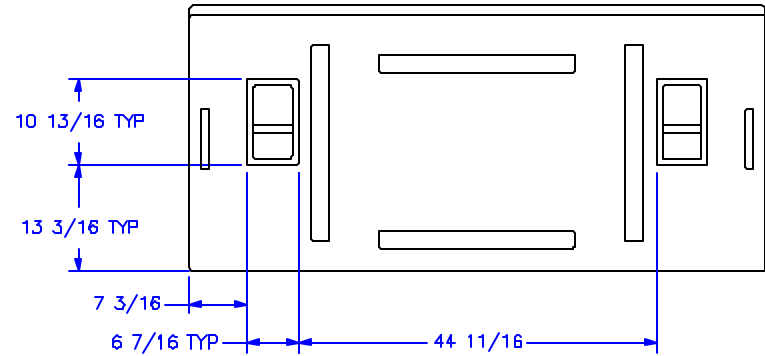
TOP  
(BOTTOM SEE NOTE 5)



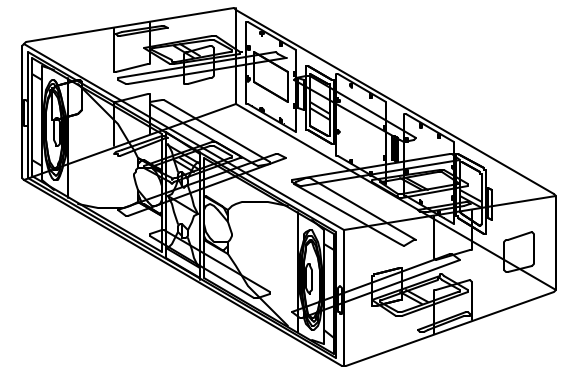
FRONT



SIDE



VIEW A-A



- NOTES:
1. SYMBOL INDICATES 3" FLYTRACK STRIP.
  2. SYMBOL INDICATES CENTER OF BALANCE.
  3. CABINET IS SYMMETRICAL ABOUT CENTERLINE DESIGNATIONS
  4. WEIGHT APPROX. 363#, SHIPPING WEIGHT 375#.
  5. TOP AND BOTTOM ARE IDENTICAL EXCEPT RUNNERS PROTRUDE 1/4" ON BOTTOM, AND RUNNER MATING CHANNELS ARE RECESSED 1/8" ON TOP.
  6. BUILT-IN HANDLES ( 2 PLACES EACH SIDE).
  7. BUILT-IN RIGGING ATTACHMENT POINTS ( 2 PLACES EACH SIDE).

UNLESS OTHERWISE SPECIFIED:  
ALL DIMENSIONS ARE IN INCHES.

TOLERANCE IN INCHES  
X ±.063  
XX +.030 FRACTIONS ±1/8

THIS DRAWING IS THE PROPERTY OF BEAW AND SHALL NOT BE COPIED, REPRODUCED, OR USED AS THE BASIS FOR MANUFACTURE OR SALE OF APPARATUS WITHOUT WRITTEN AUTHORIZATION. DO NOT SCALE DRAWING

APPROVAL / DATE

DRAWN: JRM	2/25/97
CHECKED: JWB	2/25/97
DES ENG: ATR	3/1/97
MFG ENG: JS	3/12/97

**BEAW** EASTERN ACOUSTIC WORKS  
ONE MAIN STREET WHITINSVILLE, MASSACHUSETTS 01555 USA

CABINET/FINISHED/BLACK/  
KF861  
[MECHANICAL SPECIFICATION]

SHEET 1 OF 1 SCALE: 1 TO 24  
DWG NO: 510336 REV 0