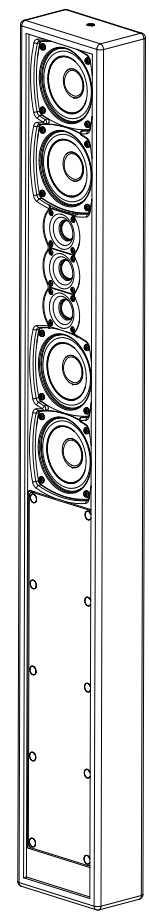
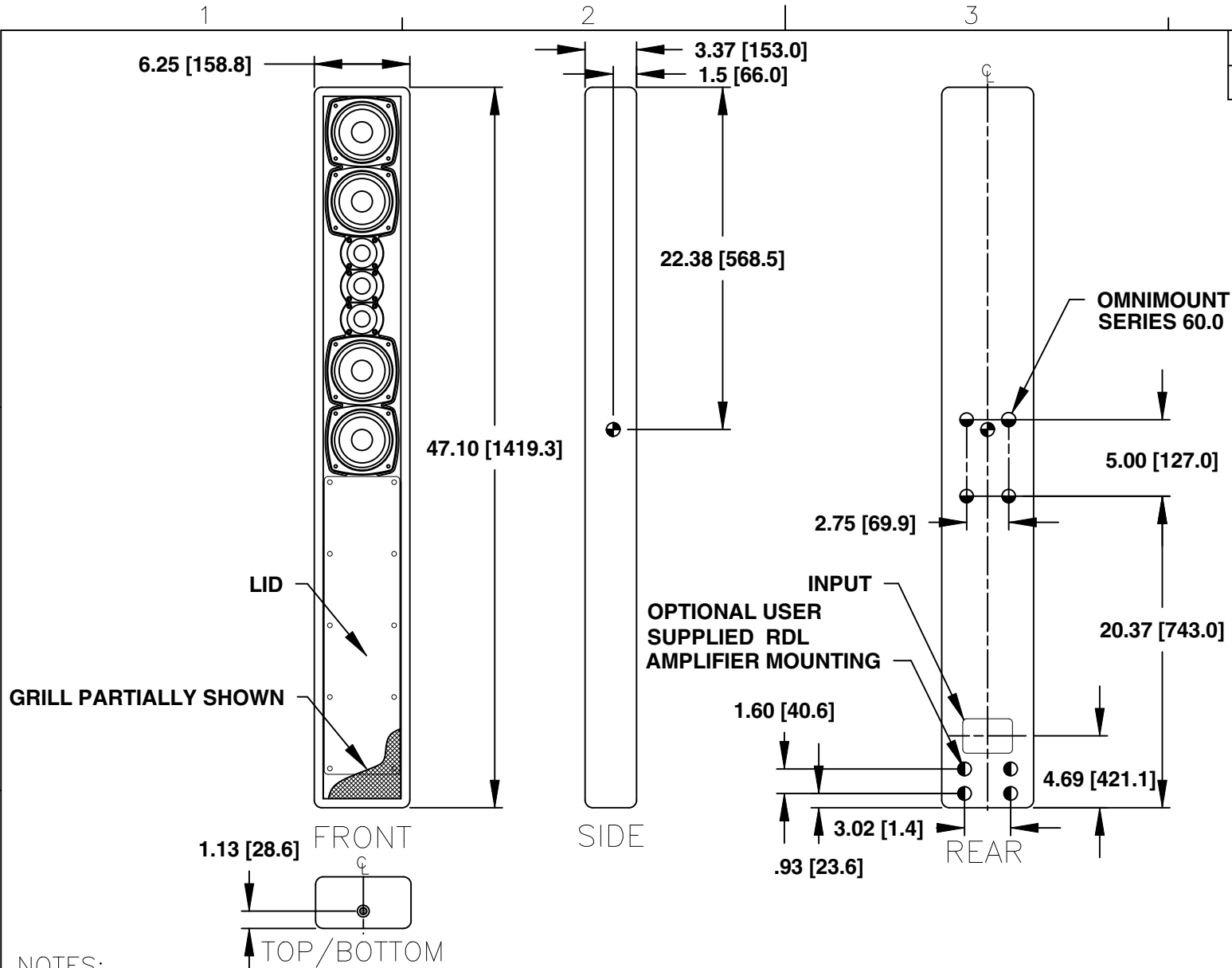


REV	CHANGE NUMBER	DATE
A	ECOWHT8999	10/19/12



LS432i-P85

- NOTES:
1. SYMBOL INDICATES 1/4-20 THREADED MOUNTING POINT.
 2. SYMBOL INDICATES 5/16-18 THREADED MOUNTING POINT.
 3. SYMBOL INDICATES NON LOAD BEARING MOUNTING POINT, 8-32 THREADED HOLE.
 4. SYMBOL INDICATES CENTER OF BALANCE.
 5. WEIGHT APPROX. 25 lb [11 kg]
 6. SHIPPING WEIGHT APPROX. 35 lb [16 kg]

THIRD ANGLE PROJECTION

THE INFORMATION CONTAINED HEREIN IS PROPRIETARY AND CONFIDENTIAL PROPERTY OF LOUD TECHNOLOGIES, INC. ALL RIGHTS RESERVED

UNLESS OTHERWISE SPECIFIED:
ALL DIMENSIONS ARE IN INCHES
DUAL [MM] DIMENSIONS FOR REF ONLY

TOLERANCES
LINEAR ± 0.13 in/ ± 3.3 mm
ANGLES ± 1°

(X.XX) = REF DIMS
NO TOLERANCE IMPLIED

TSC=THEORETICAL SHARP CORNER

DIMENSIONS ACROSS CENTERLINES
TO BE SYMMETRICAL

EAW www.eaw.com

TITLE:
DWG CUSTOMER LS432i-P85
[MECHANICAL SPECIFICATION]

A	SHEET 1 OF 1	SCALE: 1 TO 10
---	--------------	----------------

DRAWING NUMBER: 2038830-CD

REVISION: A