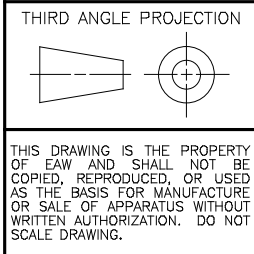


REV	DESCRIPTION	APVD/DATE
1	REVISED PER ECO #4724 DM 7/31/00.	KFH 9/6/00

- NOTES:**
1. SYMBOL ● INDICATES MOUNTING POINT, 3/8-16 THREADED HOLE (NUT PLATE).
 2. SYMBOL ⊙ INDICATES MOUNTING POINT, 3/8-16 THREADED HOLE (PI ANGLE).
 3. SYMBOL ⊕ INDICATES CENTER OF BALANCE.
 4. WEIGHT APPROX. 60 LBS.
 5. SHIPPING WEIGHT APPROX. 70 LBS.



UNLESS OTHERWISE SPECIFIED:
ALL DIMENSIONS ARE IN INCHES
TOLERANCE IN INCHES
.XX ± .13
ANGLES ± 1°

(X.XX) = REF DIMS
NO TOLERANCE IMPLIED
T.S.C.=THEORETICAL SHARP CORNER
DIMENSIONS ACROSS CENTERLINES
TO BE SYMMETRICAL

STATUS: PRODUCTION	
APPROVALS	DATE
DRAWN: JWB	7/14/97
CHECKED: RAS	7/15/97
DES ENG: SO	7/25/97
MFG ENG: KRV	7/30/97

EAW EASTERN ACOUSTIC WORKS
ONE MAIN STREET
WHITINSVILLE, MA 01588 USA

TITLE:
CABINET/FINISHED/MK2164
[MECHANICAL SPECIFICATION]

A	SHEET 1 OF 1	SCALE: 1 TO 12
DRAWING NUMBER: 510493		REVISION: 1

DOCUMENT CONTROL PER SPECIFICATION 4.5.201