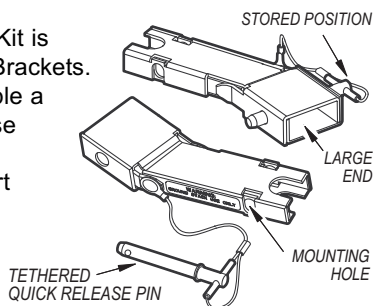




Instructions/Installation Ground Stack ABKT15

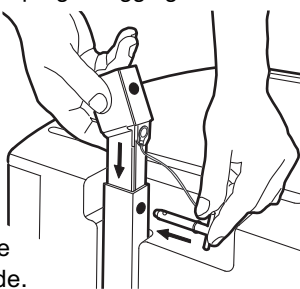
Warning: Ground stacking loudspeakers should be done with extreme caution by a certified professional who is qualified to determine the requirements for and to implement ground stacking. Failure to follow proper precautions may result in damage to the equipment, injury, or death. **BRACKETS MUST NOT BE USED FOR OVERHEAD SUSPENSION**

1. Description: The ABKT15 Ground Stack Kit is made up of 2 ABKT15 Brackets. These instructions enable a technician to install these Brackets onto a JFL118 Loudspeaker, then insert and lock the first of a maximum of 4 JFL210 Loudspeakers onto these Brackets.



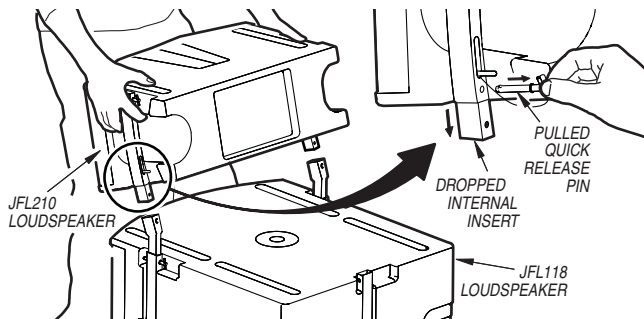
2. Attaching the 2 ABKT15 Brackets:

- With its large end facing forward, insert a Bracket into the JFL118 Loudspeaker's top right Rigging Track.
- Remove the Tethered Pin from its stored position.
- Align the mounting hole in the Bracket with those in the Rigging. Fully insert the Quick Disconnect Pin thru these holes locking the Bracket to the Rigging.
- Repeat these steps with the other Bracket on the left side.



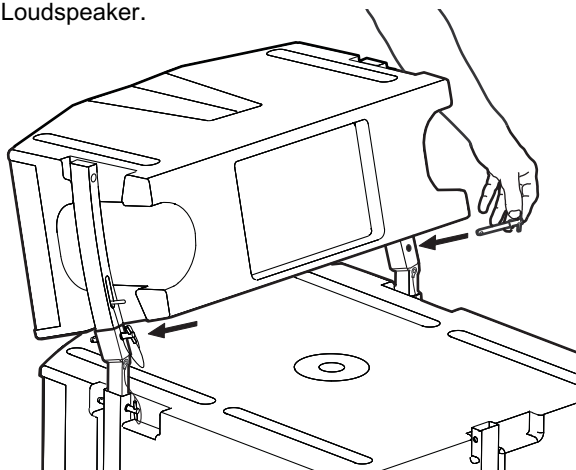
3. Inserting the JFL210 Loudspeaker onto the 2 Brackets:

- Pull the Quick Disconnect Pin from the right bottom Rigging of the JFL210 Loudspeaker. This drops the internal Insert to the ready position.
- Repeat Step a on the left side.
- Put these 2 Inserts into the top openings of the ABKT15 Brackets.



4. Locking the JFL210 Loudspeaker onto the 2 Brackets:

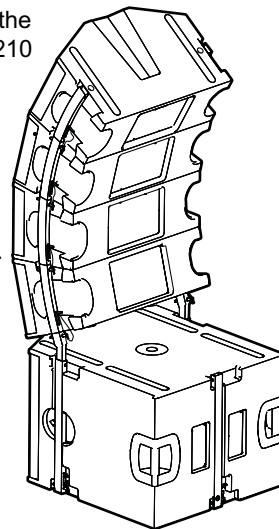
- Align the hole in the right Insert with those in the right ABKT15 Bracket. Fully insert the Quick Disconnect Pin thru these holes, locking the Insert to the Bracket.
- Repeat these steps for the left side of the JFL210 Loudspeaker.



5. No more than 4 JFL210 Loudspeakers in a Ground Stack Array.

To add additional JFL210 Loudspeakers to the Array repeat Steps 3 a. & b. then:

- Lower the 2 Inserts into the top openings of the JFL210 Rigging.
- Align the hole in each Insert with those in the right Rigging and fully insert the Quick Disconnect Pin locking the Insert to the Rigging.
- Repeat these steps for the Left side of the JFL210 Loudspeaker.



If you have questions about this ABKT15 Ground Stack Kit please contact the EAW Application Support Group:

Tel 800-992-5013 (USA only)
Tel 508-234-6158

Fax 508-234-8251
E-mail asg@eaw.com

**Thank you for purchasing
EAW products.**

The Laws of Physics / The Art of Listening



One Main Street, Whitinsville, MA 01588 tel: 800 992 5013 / 508 234 6158 fax: 508 234 8251 web: www.eaw.com