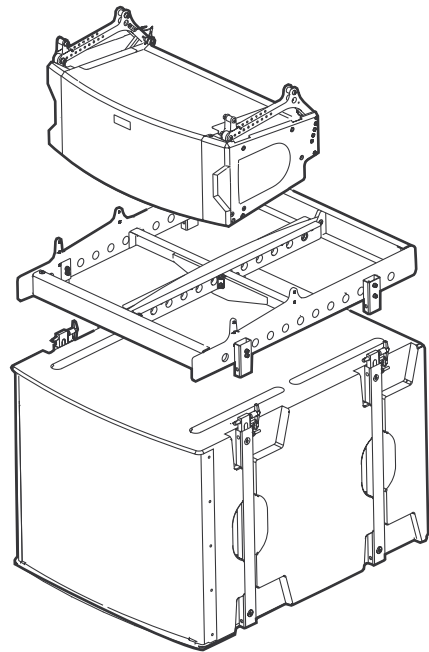


5. Using the ABKT2572/FB172 Flybar to groundstack NTL720 enclosures above an NTS250 on the ground:

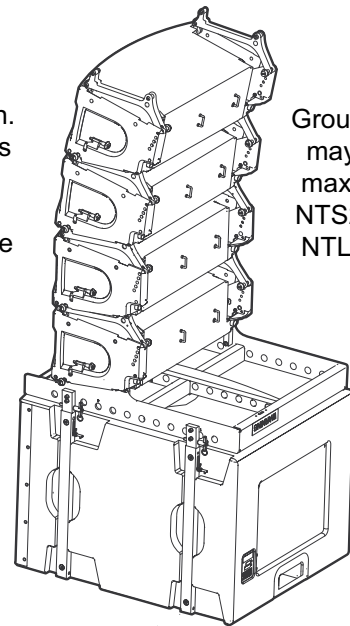


This procedure is similar to that used for suspending the array of NTL720 enclosures below an NTS250 enclosure except:

- Everything will be upside down,
- The NTS250 enclosure will be sitting on the ground with no FB152 Flybar attached.
- The Kitted FB172 flybar alone, without an attached NTL720 enclosure, will first be fastened above the NTS250 enclosure.

GROUNDSTACKING NTL720 ENCLOSURES ONTO AN NTS250

- Place the NTS250 enclosure upside down at the desired location.
- Install the Kitted FB172 flybar onto the tops of the 4 rigging tubes of the NTS250 by following the steps in 4F.
- Install an NTL720 enclosure onto the kitted FB172 Flybar
 - Remove both front quick disconnect pins from the front of the enclosure.
 - Insert the enclosure's two rear hooks onto the rear posts of the flybar.
 - Bring the front of the enclosure down so its internal latches "snap" onto the flybar's front posts. When properly installed the red area around the flybar's 2 front posts will be hidden within the enclosure.
 - Lock the enclosure to the flybar by fully inserting the both quick disconnect pins.
- Attach up to 3 additional NTL720 enclosures to the groundstacked array by repeating step 5C.



Groundstacked array may include up to a maximum of one (1) NTS250 and four (4) NTL720 enclosures.

If you have questions about this AB2572 Kit please contact the EAW Application Support Group:

Tel 800-992-5013 (USA only)
 Tel 508-234-6158
 Fax 508-234-8251
 E-mail asg@eaw.com

**Thank you for purchasing
 EAW products**

The Laws of Physics | *The Art of Listening*



**Instructions/Installation
 ABKT2572 KIT**

Warning: Flying loudspeakers should be done with extreme caution by a certified professional who is qualified to determine the requirements for and to implement loudspeaker flying. Failure to follow proper precautions may result in damage to the equipment, injury, or death.

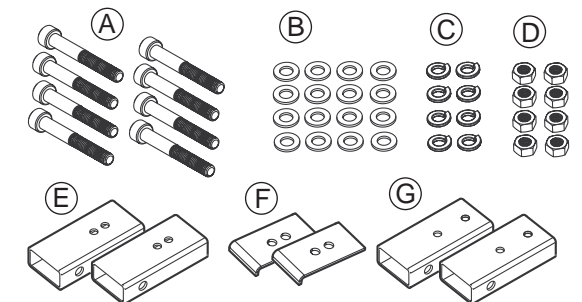
1. Description: The ABKT2572 Adapter Bracket Kit is used to modify the FB172 Flybar so it may be attached to an NTS250 enclosure, or the bottom enclosure of up to a three NTS250 enclosure array. This allows an array of up to 6 NTL720 Loudspeakers to be hung below a suspended NTS250 Loudspeaker or up to 4 NTL720 Loudspeakers to be mounted onto a single groundstacked NTS250 Loudspeaker.

This sheet details how to install the kit to the FB172 Flybar, how to hang NTL720 enclosures below a suspended NTS250 enclosure, and how to stack NTL720 enclosures above an NTS250 enclosure on the ground.

NOTE: When groundstacking an array of NTL720 enclosures above an NTS250 enclosure DO NOT USE the NTL720 Groundstack Kit, P/N 0020646.

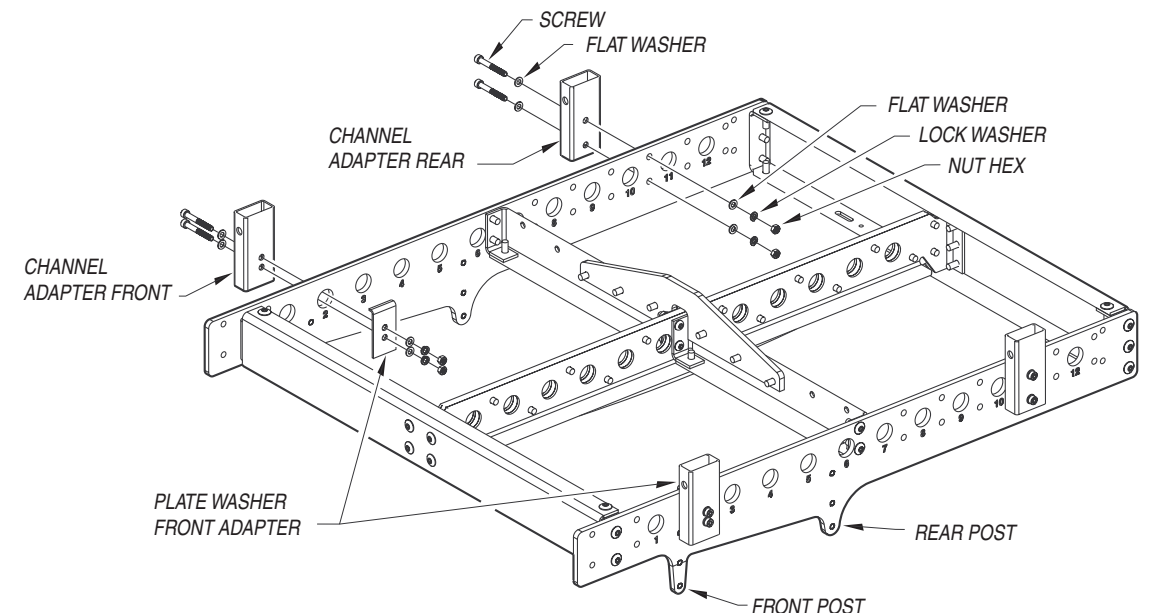
2. Inventory: Before beginning installation, inventory your ABKT2572 Kit to the items listed.

Item	Qty	Description
A	8	Screw M5 x 40mm lg Black
B	16	Washer Flat M5 Black
C	8	Washer Lock M5 Black
D	8	Nut M5 Black
E	2	Channel Adapter Front
F	2	Plate Washer Adapter Front
G	2	Channel Adapter Rear
H	1	Instructions (This Sheet)



3. Attaching the Kitted ABKT2572 hardware to the FB172 Flybar:

Assemble the ABKT2572 components to the FB172 Flybar as shown below, torquing the hardware to 56 in-lbs (6.4 Nm).



4. Using the ABKT2572/FB172 Flybar to Hang NTL720 Enclosures Below A Suspended NTS250:

WORKING LOAD LIMITS (WLL), VERTICAL UNDERHANG:

FB152 Fly-Bar WLL: 1270 lb/ 577 kg,
maximum (3) NTS250 in succession

FB172 Fly-Bar with ABKT2572 Adapter bracket kit WLL:
307 lb/ 140 kg, maximum (6) NTL720 in succession

WEIGHTS:

NTS250 =
57.6 Kg [127 Lb]

NTL720 =
21.5 Kg [47 Lb]

FB172 =
15.4 Kg [34 Lb]

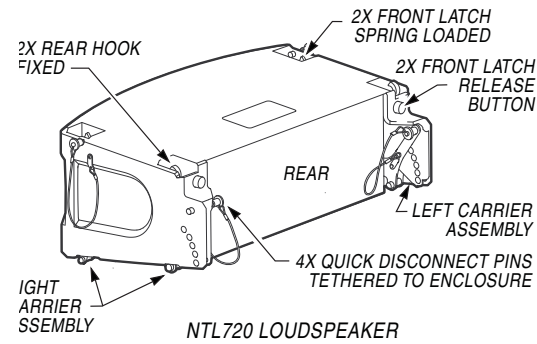
FB152 =
21.8 Kg [48 Lb]

ABKT2572 =
1.4 Kgs [3 Lb]

The features of an NTL720 Enclosure are illustrated to the right.

Suspending NTL720 enclosures below a NTS250 enclosure is done in the following sequence:

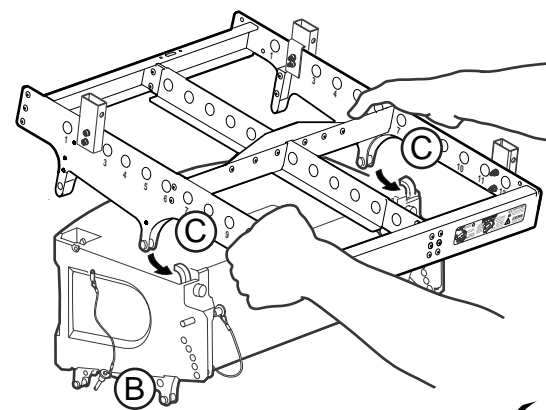
- Attaching the Kitted FB172 flybar to a single NTL720 enclosure.
- Lowering the suspended NTS250 enclosure/s onto the Flybar/ NTL720 Enclosure and locking them together,
- Hoisting the NTS250/NTL720 array
- Attaching additional NTL720 enclosures to the bottom of the the array and locking them in place.



ATTACHING THE KITTED FB172 FLYBAR TO THE FIRST NTL720 ENCLOSURE.

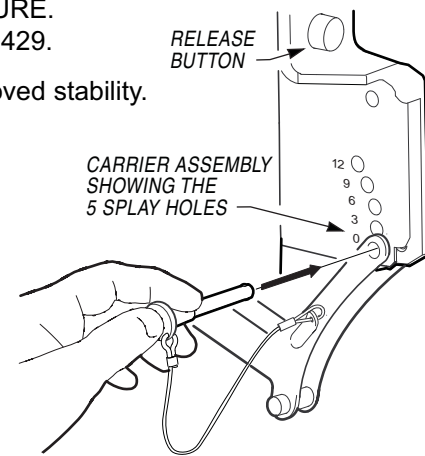
Suspend the NTS720 per the instructions provided with that product. See RD0429.

A. Lower the 2 carrier assemblies to the 0° for improved stability.

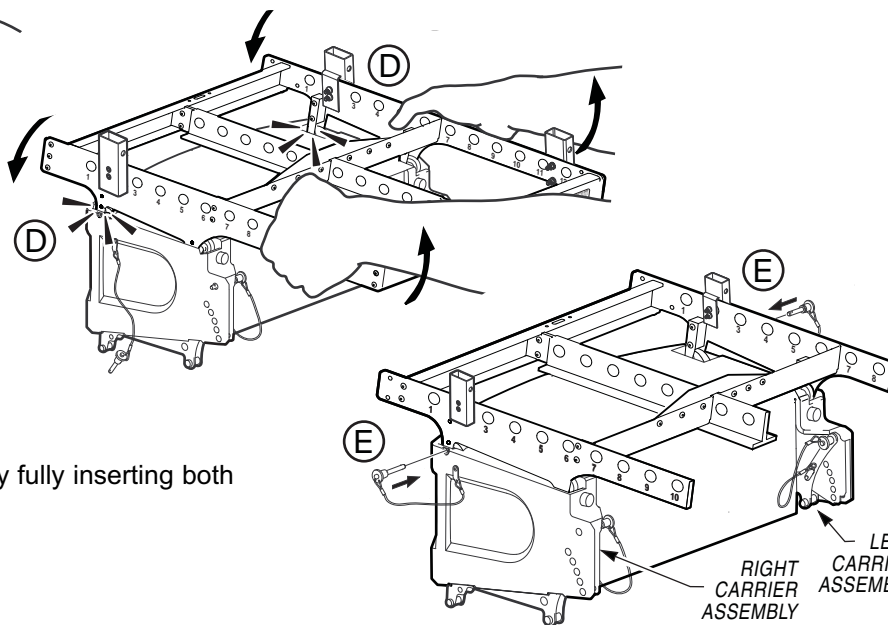


B. Remove both front quick disconnect pins from the enclosure, and depress both release buttons to ensure the latches are open.

C. Insert the Flybar's rear posts into the rear hooks of the enclosure.

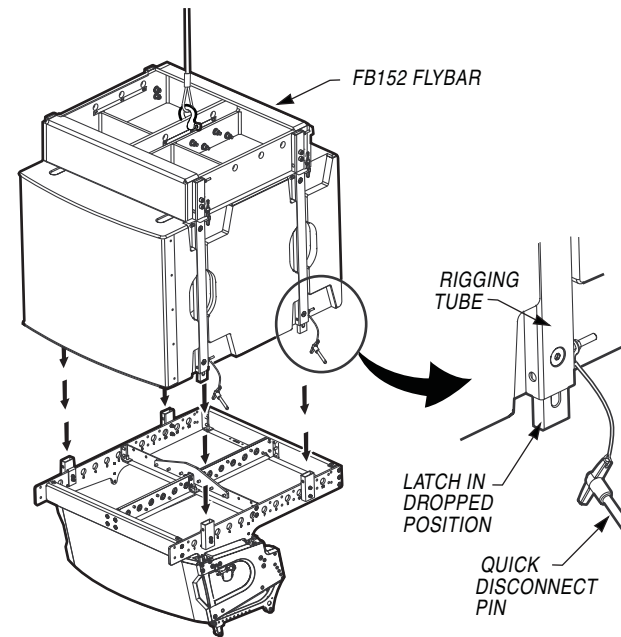


D. Swing the flybar's front down, so its two front posts "snap" into the enclosure's recessed latches. When properly engaged, all the red area around the flybar's 2 front posts will be hidden within the enclosure.

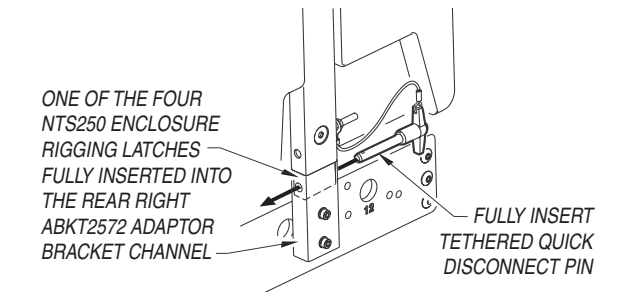


E. Lock the enclosure to the flybar by fully inserting both quick disconnect pins.

F. Lowering the suspended NTS250 enclosure onto the Flybar/NTL720 enclosure and locking them together.

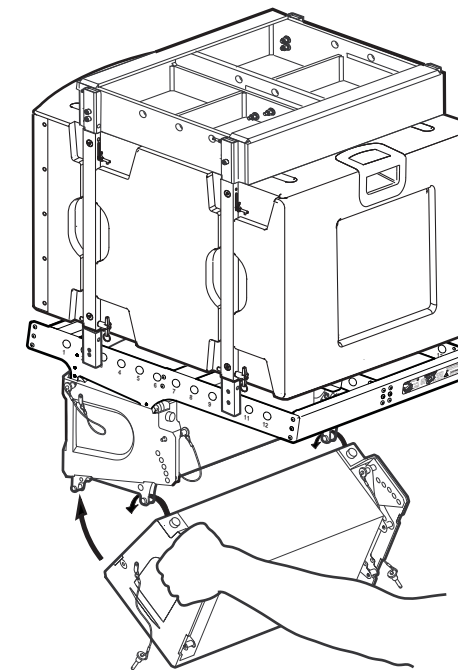


- Drop the four (4) latches, two (2) per side of the suspended NS250 enclosure by pulling their quick disconnect pins from the bottom of their rigging tubes.
- Lower the NTS250 enclosure and insert its 4 latches into the channels of the kitted FB172 flybar. Lock the four latches into the Kitted FB172 flybar by fully re-inserting the 4 quick disconnect pins into the rigging tubes as shown in the illustration below.



G. Hoist the array so the bottom of the suspended NTL720 enclosure is shoulder high. This enables the technician to both comfortably handle the second NTL720 enclosure and provides better visibility.

NOTE: The splay angle between suspended NTL720 enclosures (their aiming angles) is chosen by the NTL720 Wizard and can be 0°, 3°, 6°, 9°, or 12°. See Step 4A. These splay angles are set by adjusting the right and left carrier assemblies located in the rear of the NTL720 enclosure, see FB172 Flybar Rigging Instructions RD0429.



H. Attaching additional NTL720 enclosures to the bottom of the the array.

- Remove the two (2) quick disconnect pins from the left & right top front of the enclosure to be installed.
- Insert the lower enclosure's hooks over the rear posts of the top enclosure's carrier assemblies.
- Swing the front of this lower enclosure upward so its two internal latches "snap" onto the front posts of the top enclosure.
- Lock this lower enclosure to the top enclosure by fully re-inserting both front quick disconnect pins.

Suspended array may include up to a maximum of three (3) NTS250 and six (6) NTL720 enclosures.

