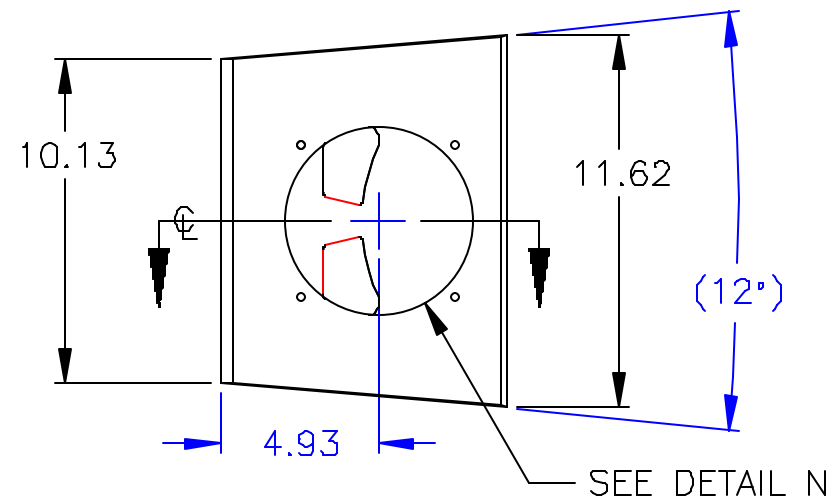
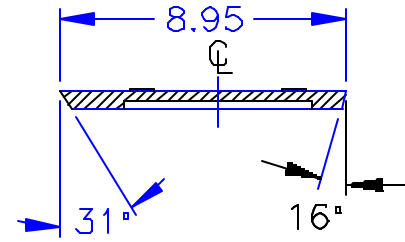
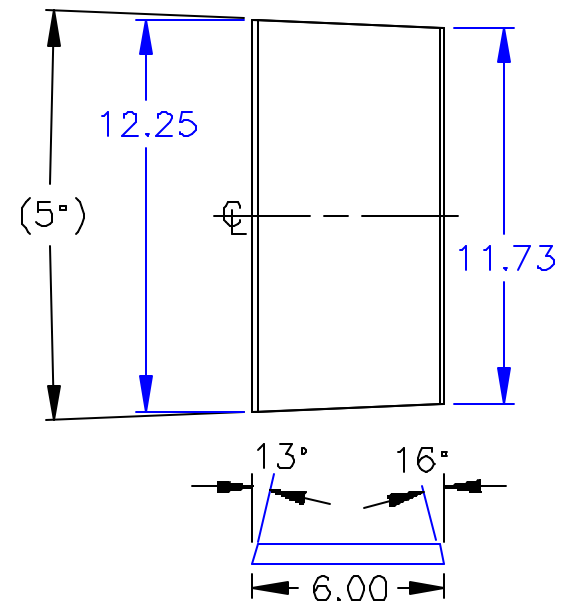


NOTES

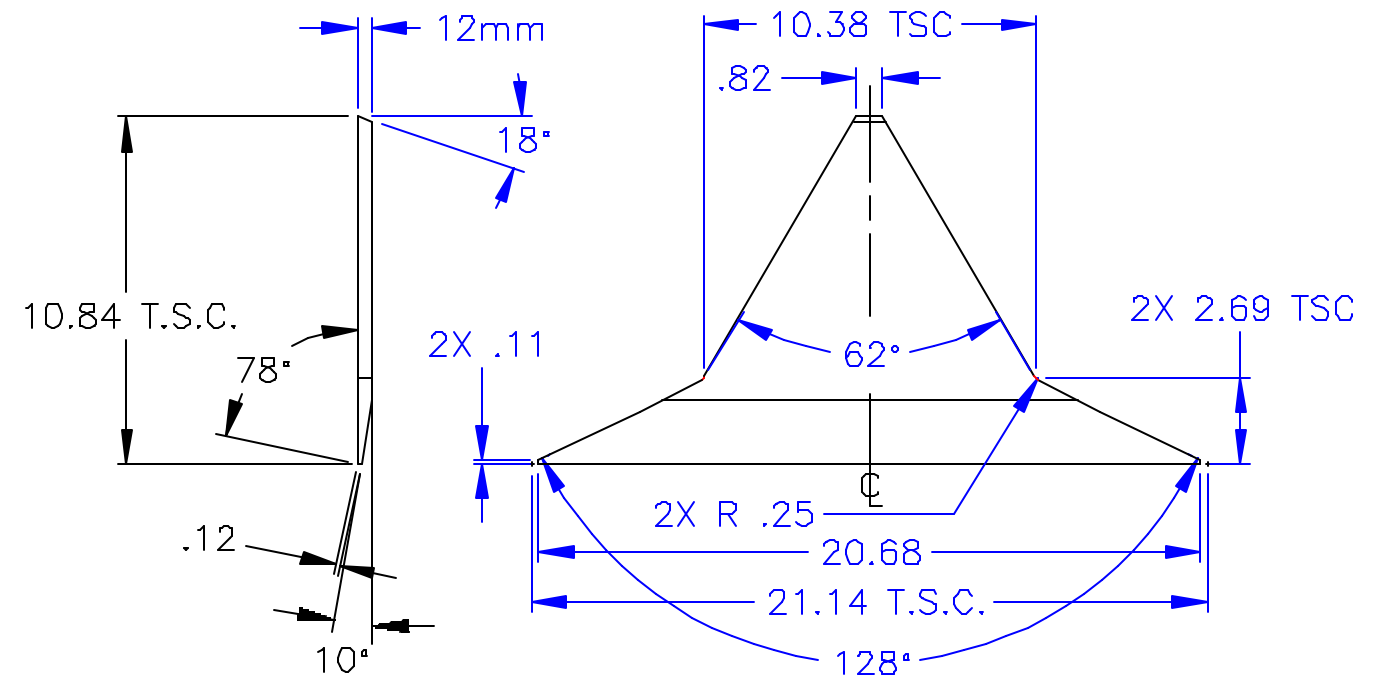
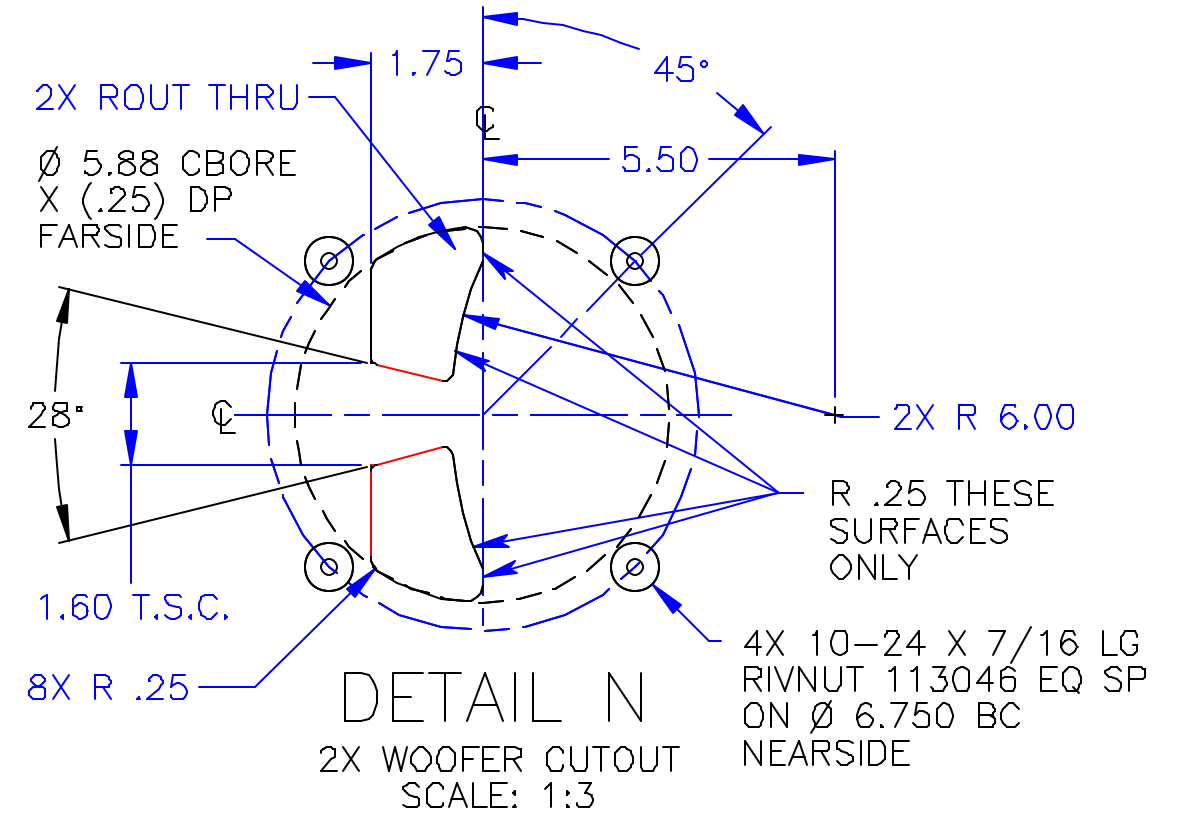
1. MATERIAL: UNLESS OTHERWISE SPECIFIED CONSTRUCT WITH 15mm EXTERIOR GRADE BALTIC BIRCH PLYWOOD. 4X CLEATS TO BE 15mm X 1.69 WIDE X 2.25 LG. 2X CLEATS TO BE 15mm X 1.69 WIDE X 11.50 LG. ASSEMBLE USING ADHESIVE 0004781. PLAIN STEEL HARDWARE COMPONENTS MAY BE USED. SEE EAW SPECIFICATION 480500.
2. UNLESS OTHERWISE SPECIFIED ROUT ALL OUT SIDE EDGES TO R .12.
3. ROUT ALL INSIDE EDGES TO R .12.
4. ALL UNSPECIFIED RADII TO BE R .25.
5. DETAILS L & M TO BE SET IN .12 DP ROUTS IN TOP AND BOTTOM.
6. CABINET USES LID 0016102.



DETAIL M
2X INNER INCLINE

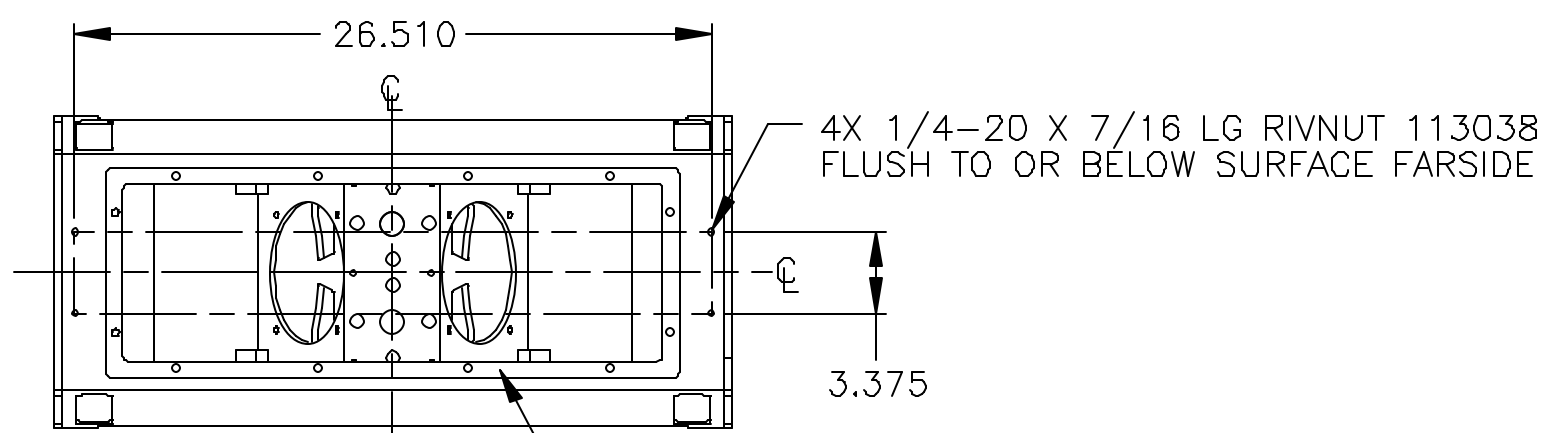


DETAIL L
2X OUTER INCLINE

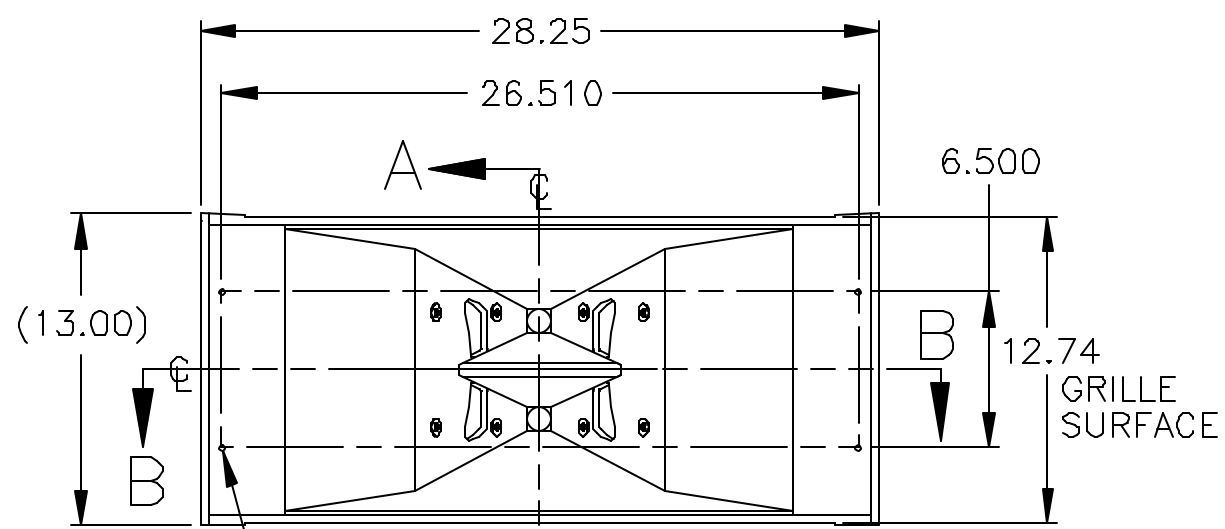


DETAIL K
2X FLARE

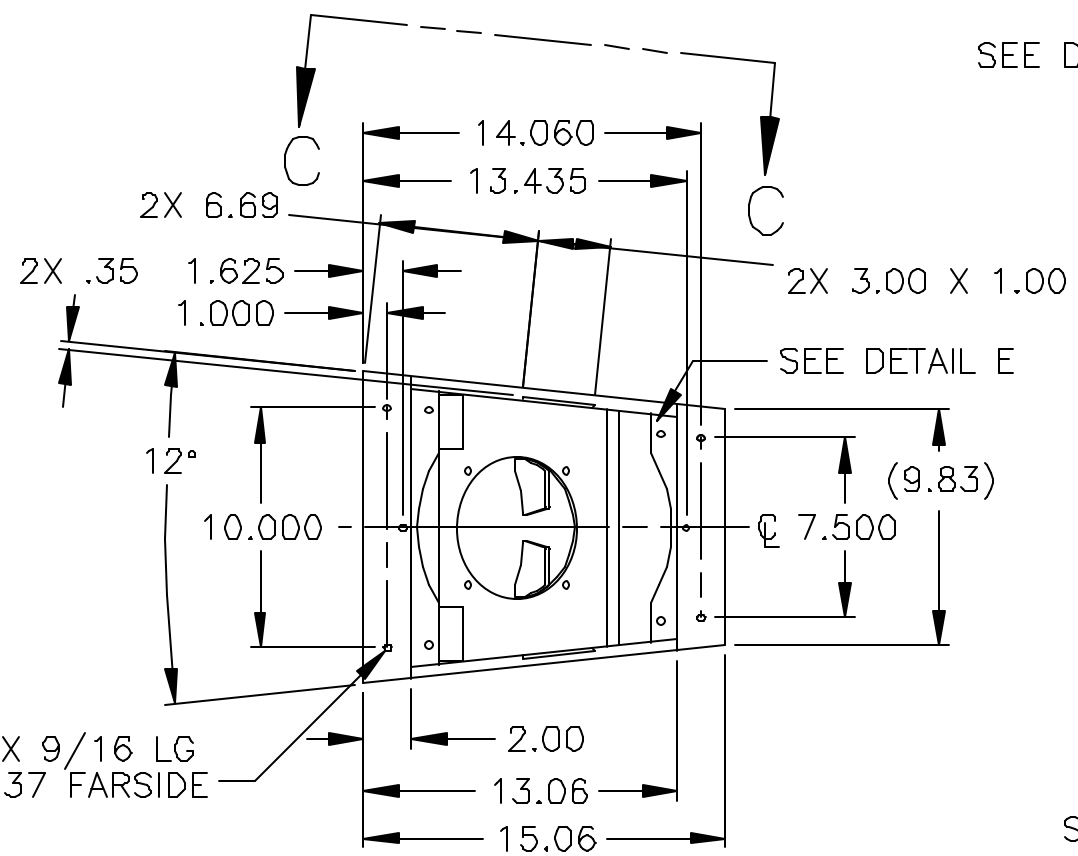
EAW EASTERN ACOUSTIC WORKS ONE MAIN STREET WHITINSVILLE, MA 01588 USA		
TITLE: CABINET/UNPAINTED-KF737 [MANUFACTURING SPECIFICATION]		
B	SHEET 4 OF 4	SCALE: 1 TO 6
DRAWING NUMBER: 0011066		REVISION: B



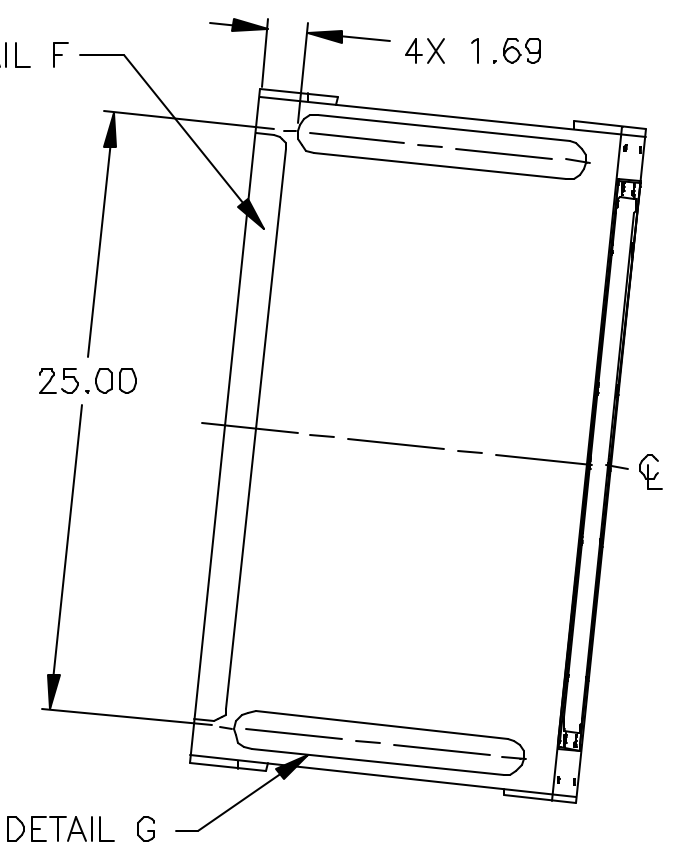
BACK



FRONT



RIGHT SIDE
DIMENSIONS APPLY TO BOTH SIDES

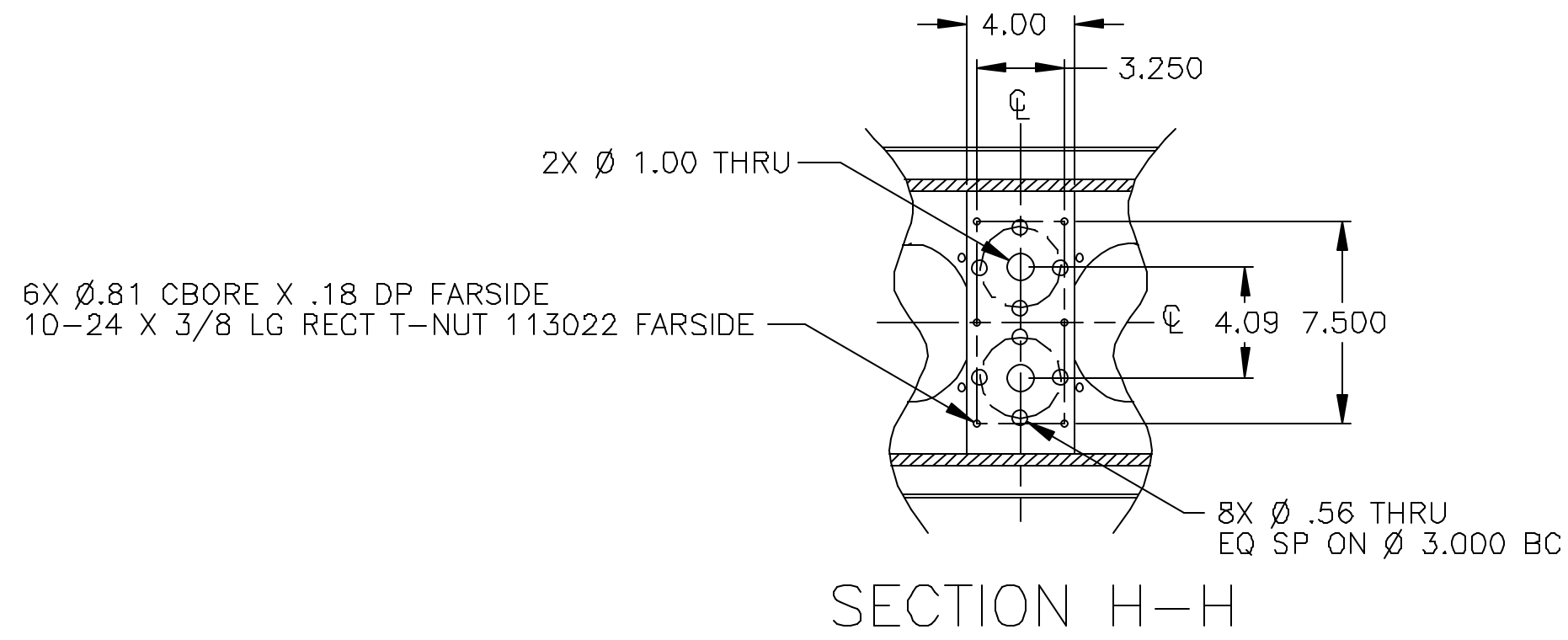
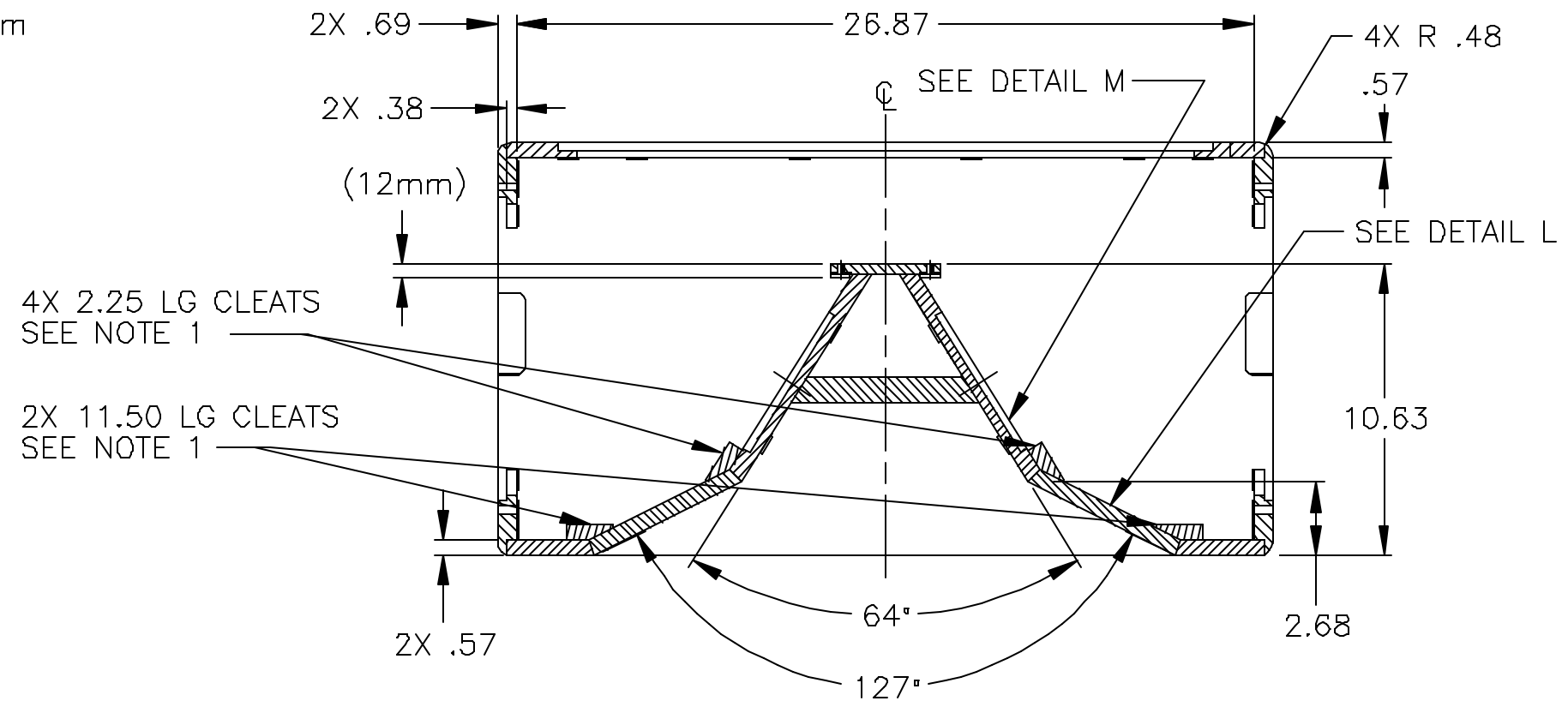
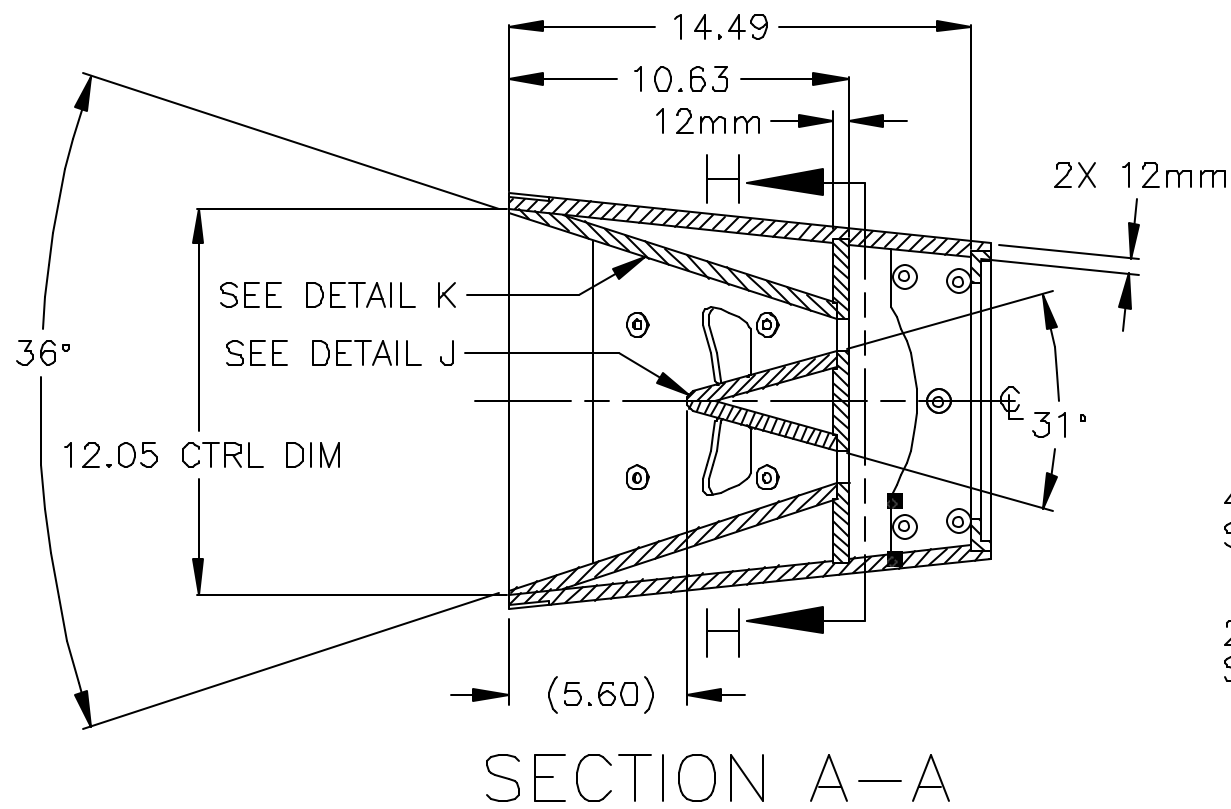


VIEW C-C
DIMENSIONS APPLY TO TOP/BOTTOM

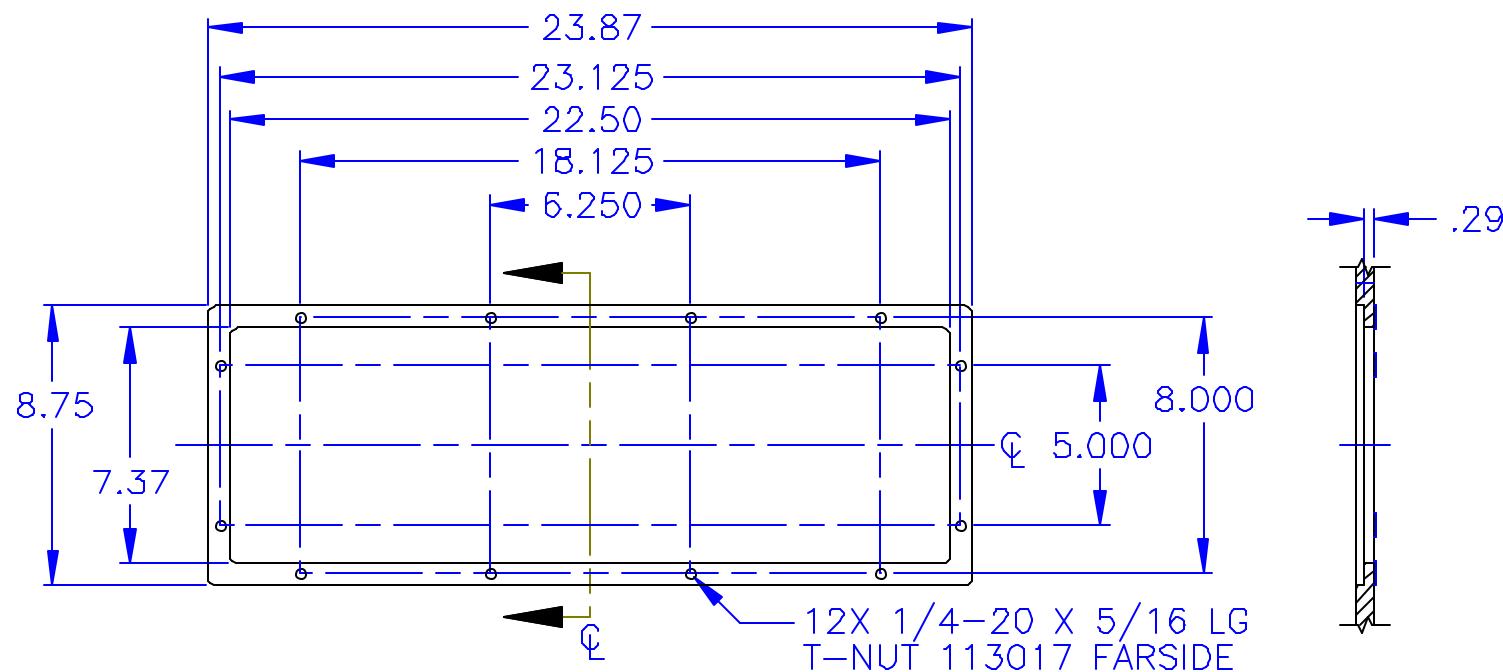
REV	DESCRIPTION	APVD/DATE
A	RELEASED TO PRODUCTION FROM REV 1 WITH THE FOLLOWING CHANGES: 4X RIVNUT 113038 WAS T-NUT 113016, SEE BACK VIEW. 4X RIVNUT 113038 WAS T-NUT 113016, SEE FRONT VIEW. 6X RIVNUT 113037 WAS T-NUT 113016, SEE RIGHT SIDE VIEW. 6X T-NUT 113022 WAS 113024, SEE SECTION H-H. 2X ADDED LEADERS TO IDENTIFY CLEAT SIZES, SEE SECTION B-B. REMOVED SECTION VIEW, SEE DETAIL J. DIM 12.25 WAS 12.30 AND REMOVED SECTION VIEW, SEE DETAIL L. ADDED DIMS 11.62 AND 10.13. DIM (12°) WAS (10°), AND REMOVED SECTION VIEW, SEE DETAIL M. DIM 10.38 WAS 10.61, ADDED DIM 10.84 T.S.C., 12° WAS 10°, 2X .11 WAS .12, 62° WAS 61°, 2X 2.69 T.S.C. WAS 2X 2.79, SEE DETAIL K. 4X RIVNUT 113046 WAS T-NUT 113024. DIM 1.60 T.S.C. WAS 1.31 T.S.C., 28° WAS 30°. REMOVED "FLUSH TO OR BELOW SURFACE" FROM RIVNUT 113046 CALLOUT, SEE DETAIL N. 4X 2.25 LG CLEATS WAS 2X 11.00, SEE NOTE 1 PER DSRWHT4803 MELANIE 5/3/04	RS 8/13/04 DC 8/23/04
B	0016102 WAS 0005656 AND REMOVED 0005657, SEE NOTE 6 PER ECOWHT3869 KL 8/3/05	RS 8/4/05

DOCUMENT CONTROL PER SPECIFICATION 4.5.201

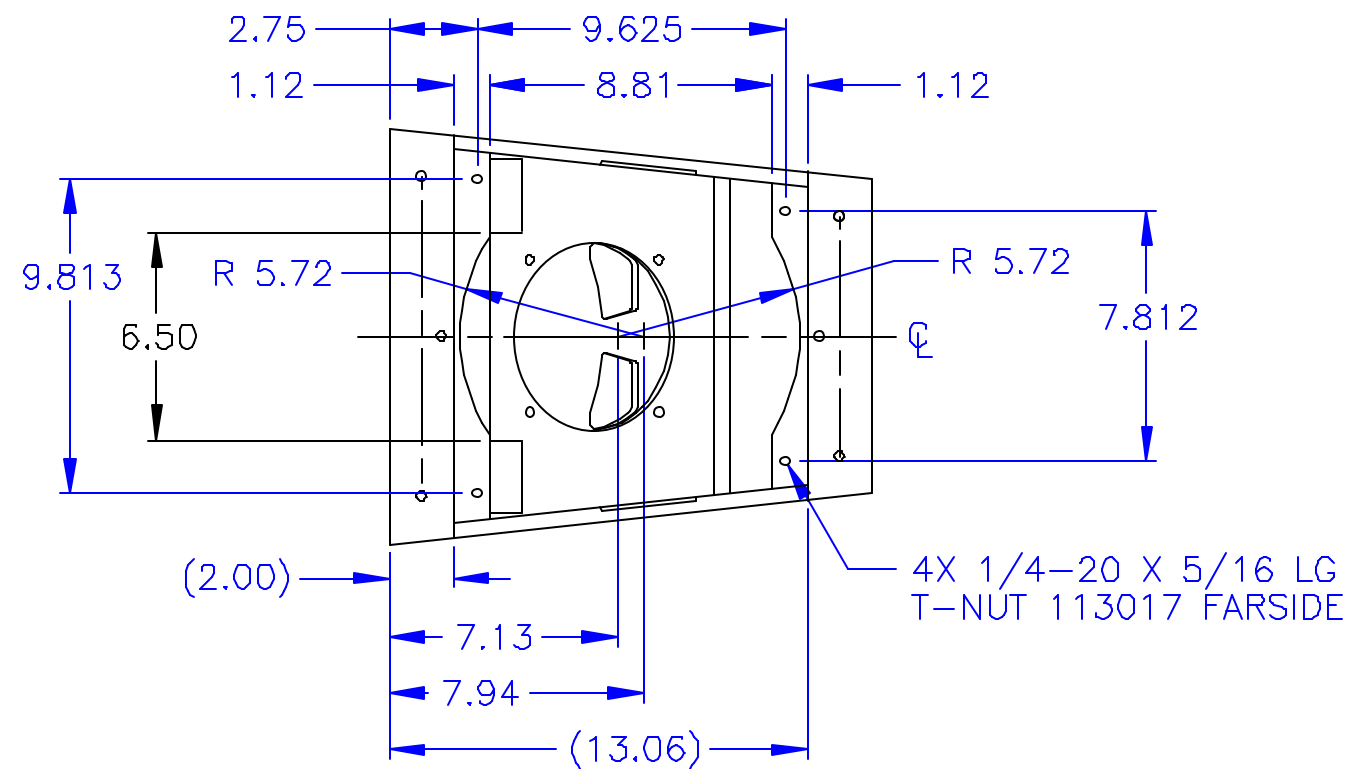
THIRD ANGLE PROJECTION 	UNLESS OTHERWISE SPECIFIED: ALL DIMENSIONS ARE IN INCHES TOLERANCE IN INCHES X ± .1 .XX ± .03 .XXX ± .010 FRACTIONS ± 1/32 ANGLES ± 1/2° (X.XX) = REF DIMS NO TOLERANCE IMPLIED T.S.C.=THEORETICAL SHARP CORNER DIMENSIONS ACROSS CENTERLINES TO BE SYMMETRICAL	STATUS: PRODUCTION		EASTERN ACOUSTIC WORKS ONE MAIN STREET WHITINSVILLE, MA 01588 USA	
		APPROVALS	DATE		TITLE: CABINET/UNPAINTED-KF737 [MANUFACTURING SPECIFICATION]
THIS DRAWING IS THE PROPERTY OF EAW AND SHALL NOT BE COPIED, REPRODUCED, OR USED AS THE BASIS FOR MANUFACTURE OR SALE OF APPARATUS WITHOUT WRITTEN AUTHORIZATION. DO NOT SCALE DRAWING.		DRAWN: J MORRISON	3/30/04	SHEET 1 OF 4	SCALE: 1 TO 8
		CHECKED: RS	8/13/04	DRAWING NUMBER: 0011066	REVISION: B
		DES ENG: NB	8/31/04		
		MFG ENG: SM/KV	8/30/04		



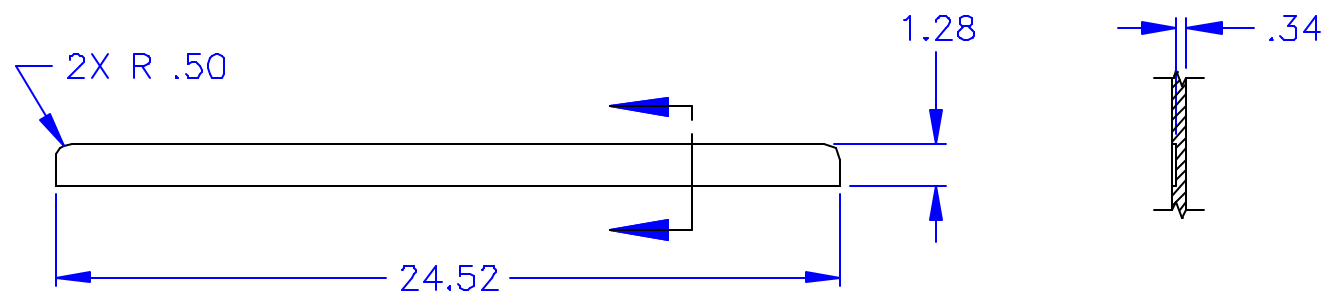
EA EASTERN ACOUSTIC WORKS		ONE MAIN STREET WHITINSVILLE, MA 01568 USA	
TITLE: CABINET/UNPAINTED-KF737 [MANUFACTURING SPECIFICATION]			
B	SHEET 2 OF 4	SCALE: 1 TO 6	
DRAWING NUMBER: 0011066		REVISION: B	



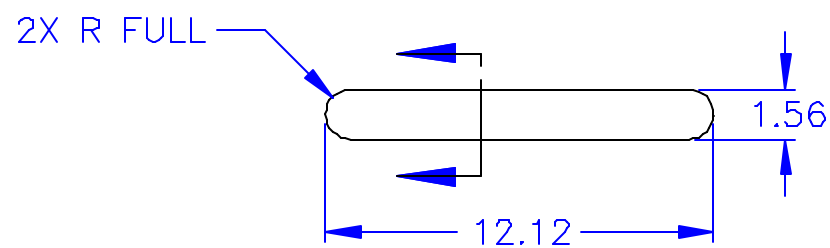
DETAIL D
BACK LID CUTOUT



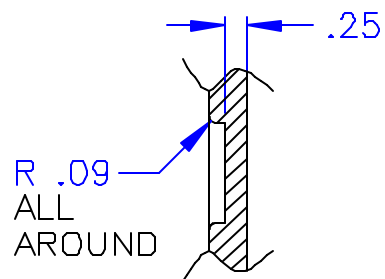
DETAIL E
2X SIDE LID CUTOUT



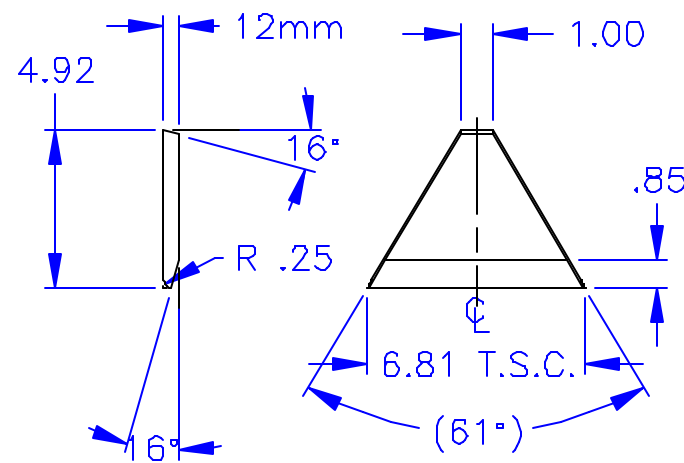
DETAIL F
2X GRILLE ROUT



DETAIL G
4X STACK PAD ROUT



SCALE: 1:3



DETAIL J
2X SEPERATOR

EA EASTERN ACOUSTIC WORKS ONE MAIN STREET WHITINSVILLE, MA 01588 USA		
TITLE: CABINET/UNPAINTED-KF737 [MANUFACTURING SPECIFICATION]		
B	SHEET 3 OF 4	SCALE: 1 TO 6
DRAWING NUMBER: 0011066		REVISION: B

