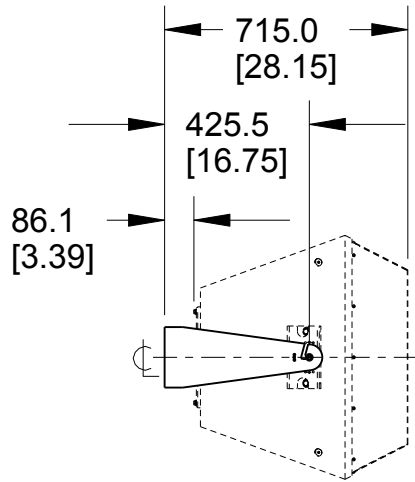
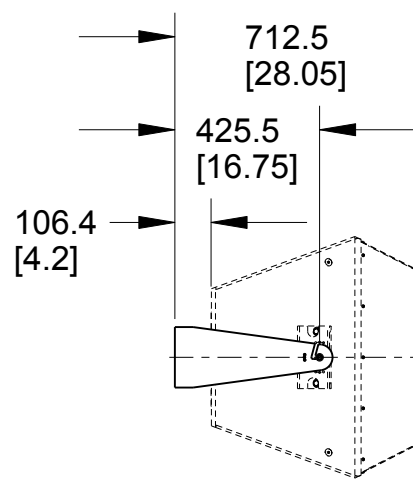
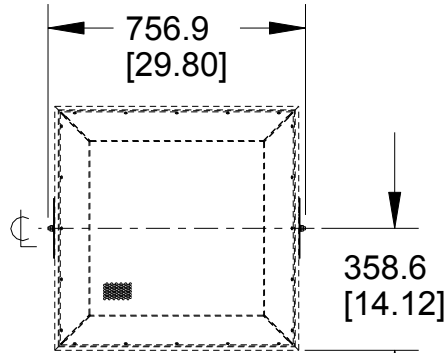


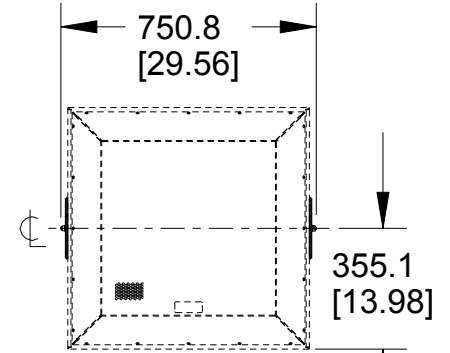
| REV | CHANGE NUMBER | DATE |
|-----|---------------|--------|
| A | ECOWHT7222 | 2/1/11 |



UBKT-QXH AS INSTALLED
QX500-WP SERIES AND QX118-WP

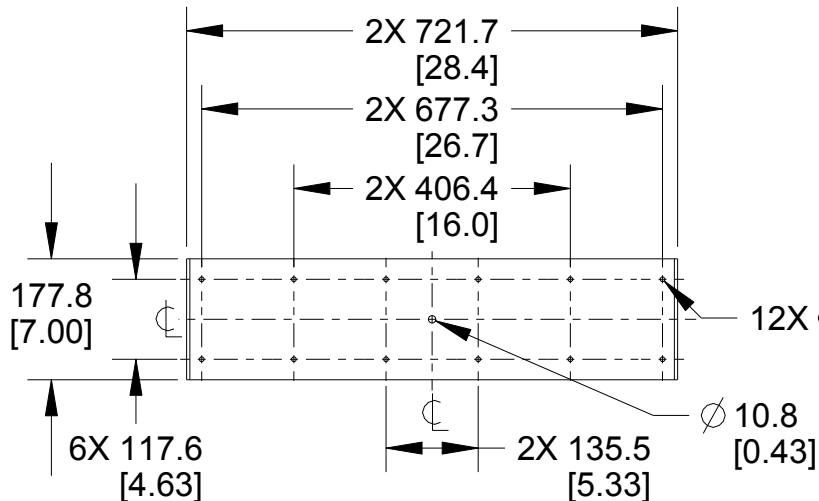


UBKT-QXH AS INSTALLED
QX500 SERIES AND QX118



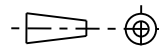
NOTES:

1. WORKING LOAD LIMIT (W.L.L.) 66 kg. [145 lb.]
2. APPROX. WEIGHT 5 kg. [11 lb.]
3. APPROX. SHIPPING WEIGHT 10 kg. [22 lb.]
4. LOUDSPEAKER NOT INCLUDED.
5. PROPER INSTALLATION REQUIRED. PLEASE REFER TO INSTALLATION INSTRUCTIONS OR CONTACT APPLICATION SUPPORT GROUP FOR FURTHER INFORMATION.
6. W.L.L. APPLIES ONLY TO INSTALLATIONS IN WHICH THE STUDS USED TO MOUNT THE BRACKET TO THE LOUDSPEAKER ARE HORIZONTALLY ORIENTED. THIS BRACKET IS NOT RECOMMENDED FOR INSTALLATIONS WHERE THIS AXIS IS VERTICAL.



FRONT VIEW
SCALE: 0.090

THIRD ANGLE PROJECTION



THE INFORMATION CONTAINED
HEREIN IS PROPRIETARY AND
CONFIDENTIAL PROPERTY OF
LOUD TECHNOLOGIES, INC.
ALL RIGHTS RESERVED

UNLESS OTHERWISE SPECIFIED:
ALL DIMENSIONS ARE IN MILLIMETERS
DUAL [INCHES] DIMENSIONS
FOR REF ONLY

TOLERANCE IN MILLIMETERS
LINEAR ± 3.3 mm / ± 0.13 in
ANGLES $\pm 1^\circ$

(X.XX) = REF DIMS
NO TOLERANCE IMPLIED

TSC = THEORETICAL SHARP CORNER

DIMENSIONS ACROSS CENTERLINES
TO BE SYMMETRICAL

EAW www.eaw.com

TITLE:
DRAWING CUSTOMER
KIT U-BRACKET [UBKT-QXH]
[MECHANICAL SPECIFICATION]

A

SHEET 1 OF 1

SCALE:
0.045

DRAWING NUMBER:

2036568-CD

REVISION:

A