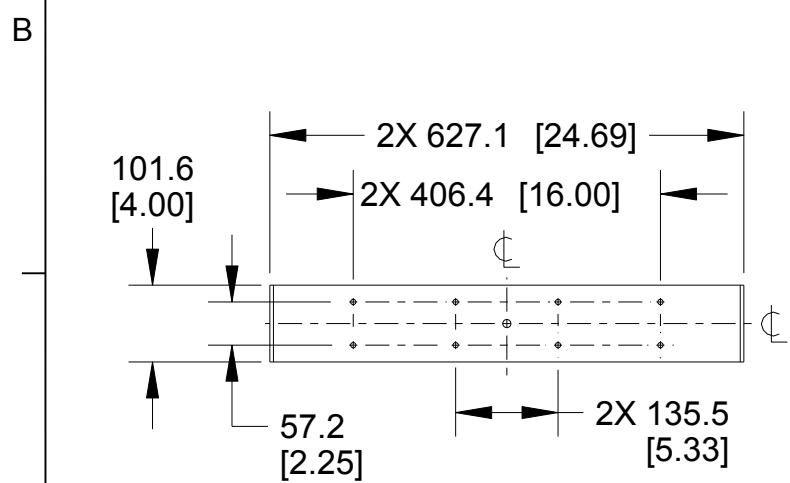


REV	CHANGE NUMBER	DATE
A	ECOWHT9325	3/29/13



NOTES:

1. WORKING LOAD LIMIT (W.L.L.) 51.7 kg. [114 lb.]
2. APPROX. WEIGHT 3 kg. [6.6 lb.]
3. APPROX. SHIPPING WEIGHT 6 kg. [13.2 lb.]
4. LOUDSPEAKER NOT INCLUDED.
5. PROPER INSTALLATION REQUIRED. PLEASE REFER TO INSTALLATION INSTRUCTIONS OR CONTACT APPLICATION SUPPORT GROUP FOR FURTHER INFORMATION.
6. W.L.L. APPLIES ONLY TO INSTALLATIONS IN WHICH THE STUDS USED TO MOUNT THE BRACKET TO THE LOUDSPEAKER ARE HORIZONTALLY ORIENTED. THIS BRACKET IS NOT RECOMMENDED FOR INSTALLATIONS WHERE THIS AXIS IS VERTICAL.

<p>THIRD ANGLE PROJECTION</p>	<p>UNLESS OTHERWISE SPECIFIED: ALL DIMENSIONS ARE IN MILLIMETERS DUAL [INCHES] DIMENSIONS FOR REF ONLY</p> <p>TOLERANCE IN MILLIMETERS LINEAR ± 3.3 mm / ± 0.13 in ANGLES ± 1°</p> <p>(X.XX) = REF DIMS NO TOLERANCE IMPLIED</p> <p>TSC = THEORETICAL SHARP CORNER</p> <p>DIMENSIONS ACROSS CENTERLINES TO BE SYMMETRICAL</p>	<p>EAW www.eaw.com</p>	
		<p>TITLE: DWG CUSTOMER KIT U-BRKT [UBRKT-QX3H] [MECHANICAL SPECIFICATION]</p>	
<p>THE INFORMATION CONTAINED HEREIN IS PROPRIETARY AND CONFIDENTIAL PROPERTY OF LOUD TECHNOLOGIES, INC. ALL RIGHTS RESERVED</p>	<p>DRAWING NUMBER: 2042189-CD</p>	<p>A SHEET 1 OF 1</p>	<p>SCALE: 0.100</p>
		<p>REVISION: A</p>	