

EAW UXA4401/UXA4403 Firmware Updating Instructions

1. Connect the UXA440x amplifier to mains power using the supplied mains cable and wait for the front panel WiFi indicator to illuminate green.
2. Use a mobile phone, laptop or desktop device to search for available WiFi networks (Figure 1). Connect to, 'EAW (product serial number)' using the password, 'password'. The amplifier serial number can be found on its rear panel (Figure 2).

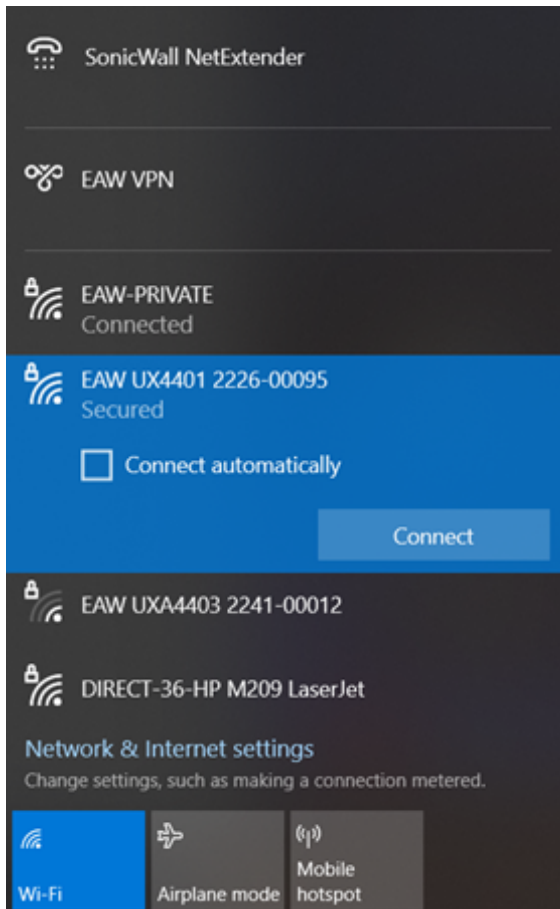


Figure 1

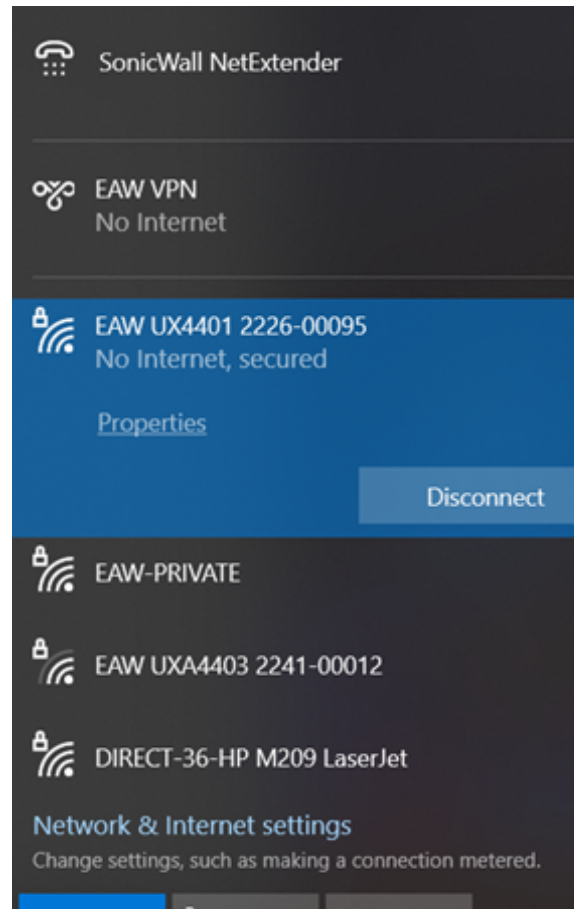


Figure 2

3. Enter the following IP address into a web browser: 192.168.4.1. The amplifier configuration web interface page will open in the browser app to enable amplifier configuration as required (Figure 3).

EAWE[®] UXA4401/UXA4403 Firmware Updating Instructions

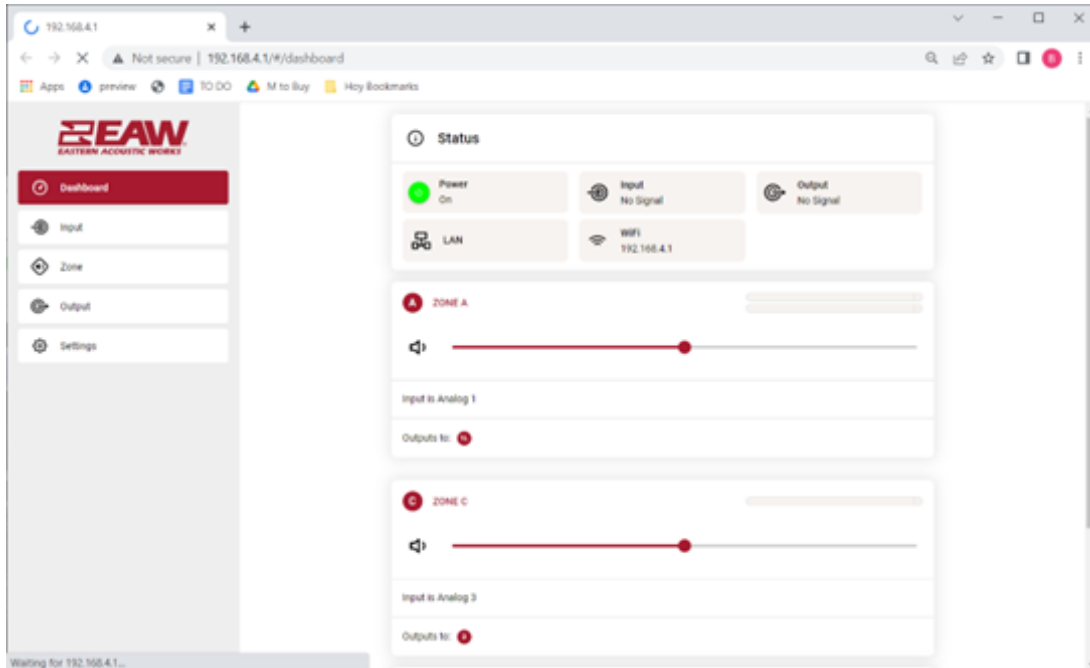


Figure 3

4. If the configuration page does not load on the browser, follow the below steps to attempt to connect online.
 - Power down the UXA4401 and wait 10 seconds before repowering.
 - Go online and offline via Windows 10 network.
 - Reboot the PC.
5. Once connected, select **Settings**, then **Device**. Click the **Update Firmware Button** (Figure 4).

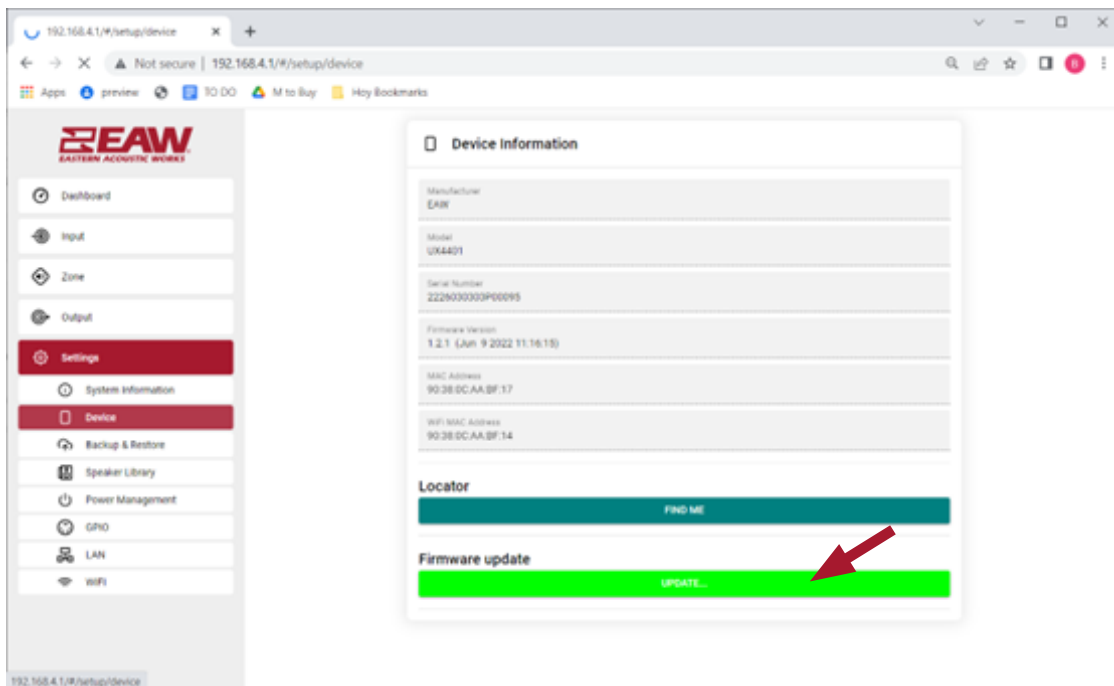


Figure 4

6. Click **Select Firmware File** (Figure 5) then browse to most current firmware version (Figure 6). Click **Update** to complete.

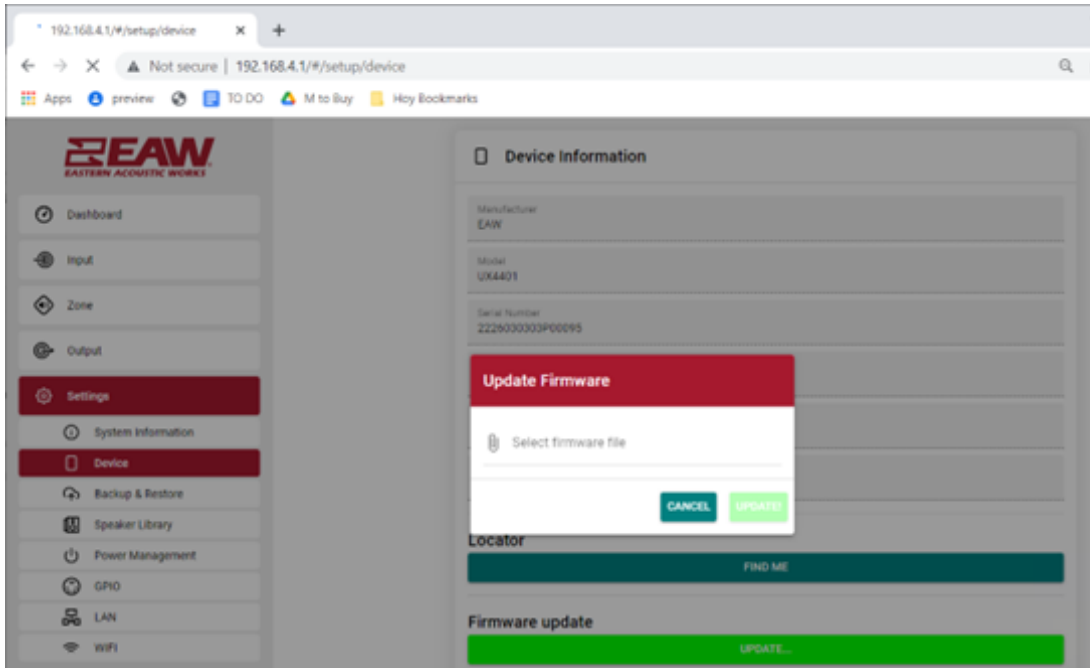


Figure 5

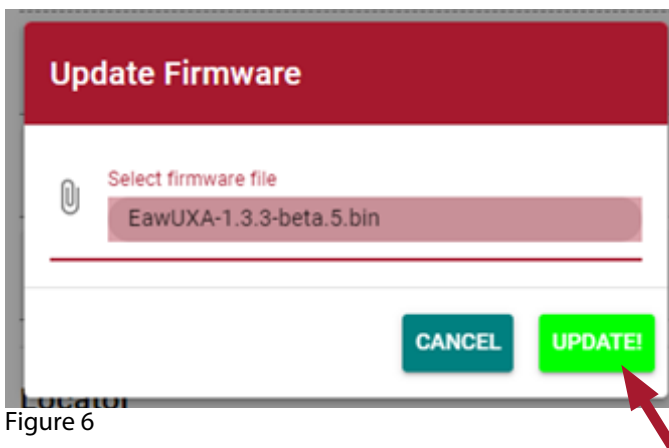


Figure 6

7. It is also possible to update the firmware via a wired connection. Though the steps once connected are the same, connection to the amp does vary.
 - Plug the amplifier into a wired network.
 - On a mobile or computer device, connect to WIFI, with WIFI being the UXA's WIFI.
 - Enter the following IP address into a web browser: 192.168.4.1

8. Once connected, select **Settings**, then **LAN**. Select **DHCP** and click apply (Figure 7)

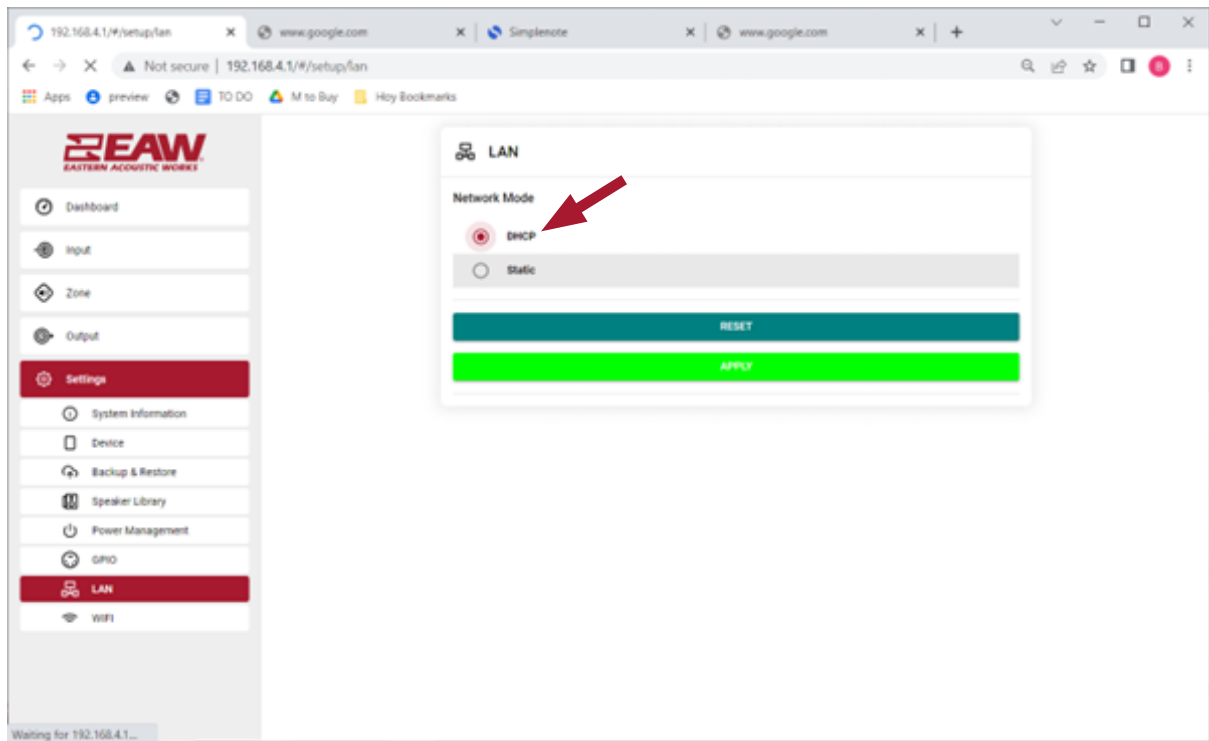


Figure 7

8. Go back to the **Dashboard** (Figure 8). Write down or note the LAN text. This is the ID assigned to your online device.

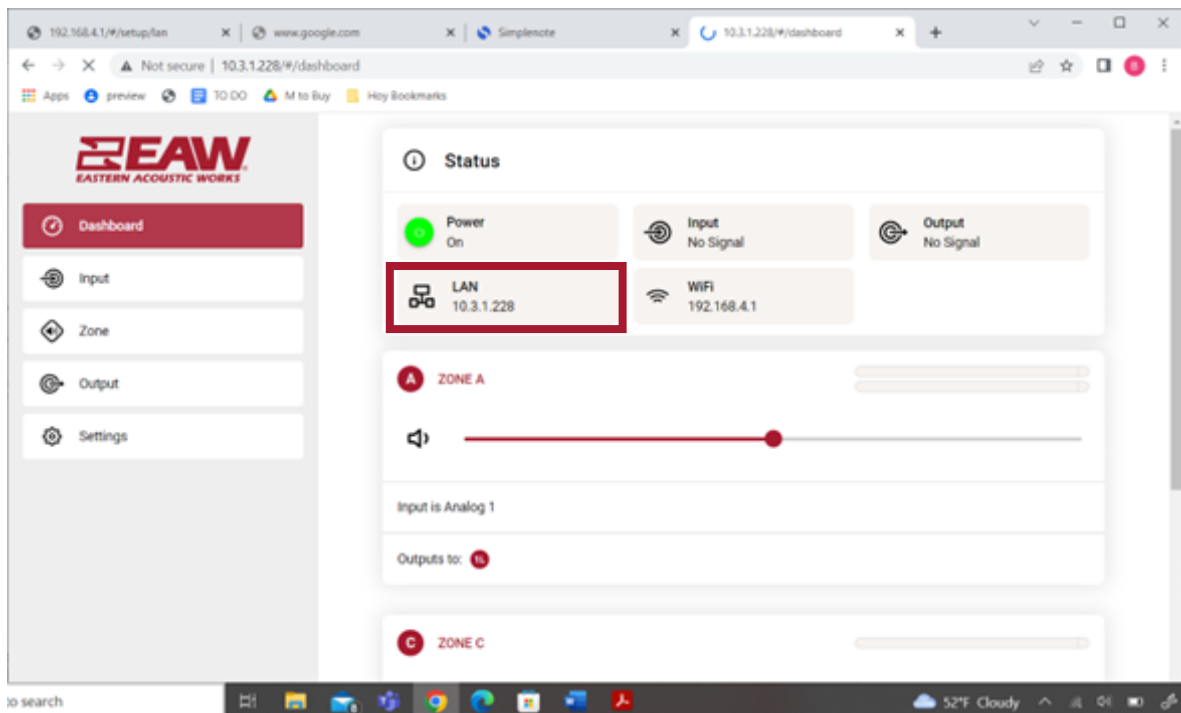


Figure 8

8. Connect device to Local Network. Open up a browser and enter in the IP address copied from before. Proceed with firmware update by following the steps starting at the top of page 2 of this document.

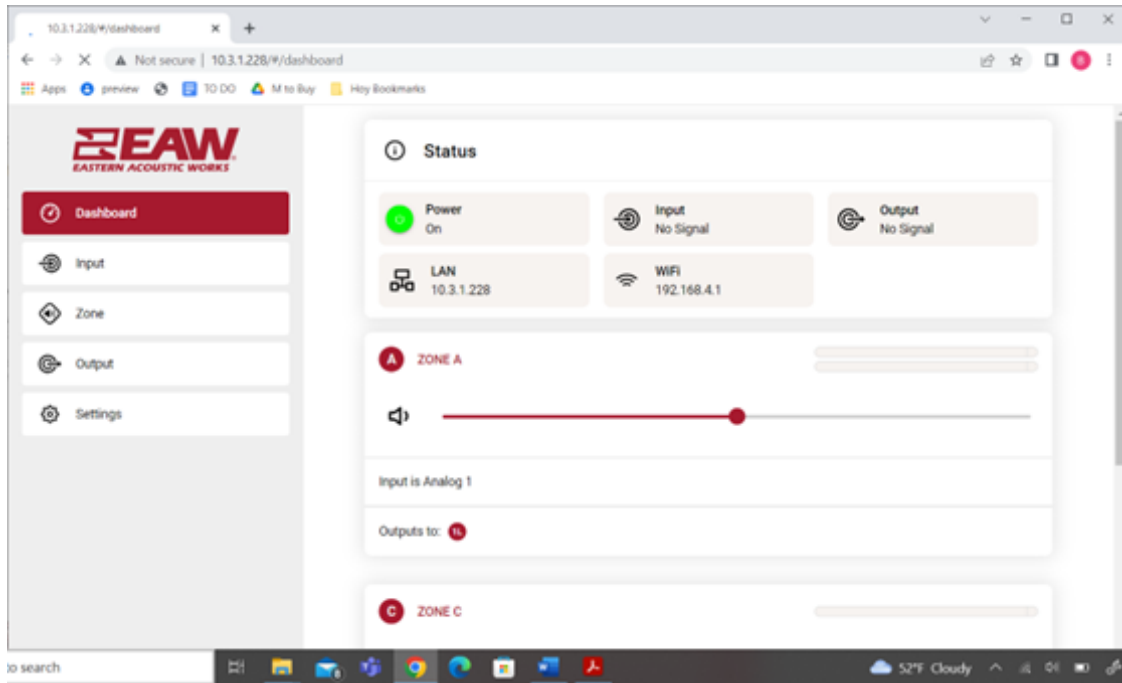


Figure 9