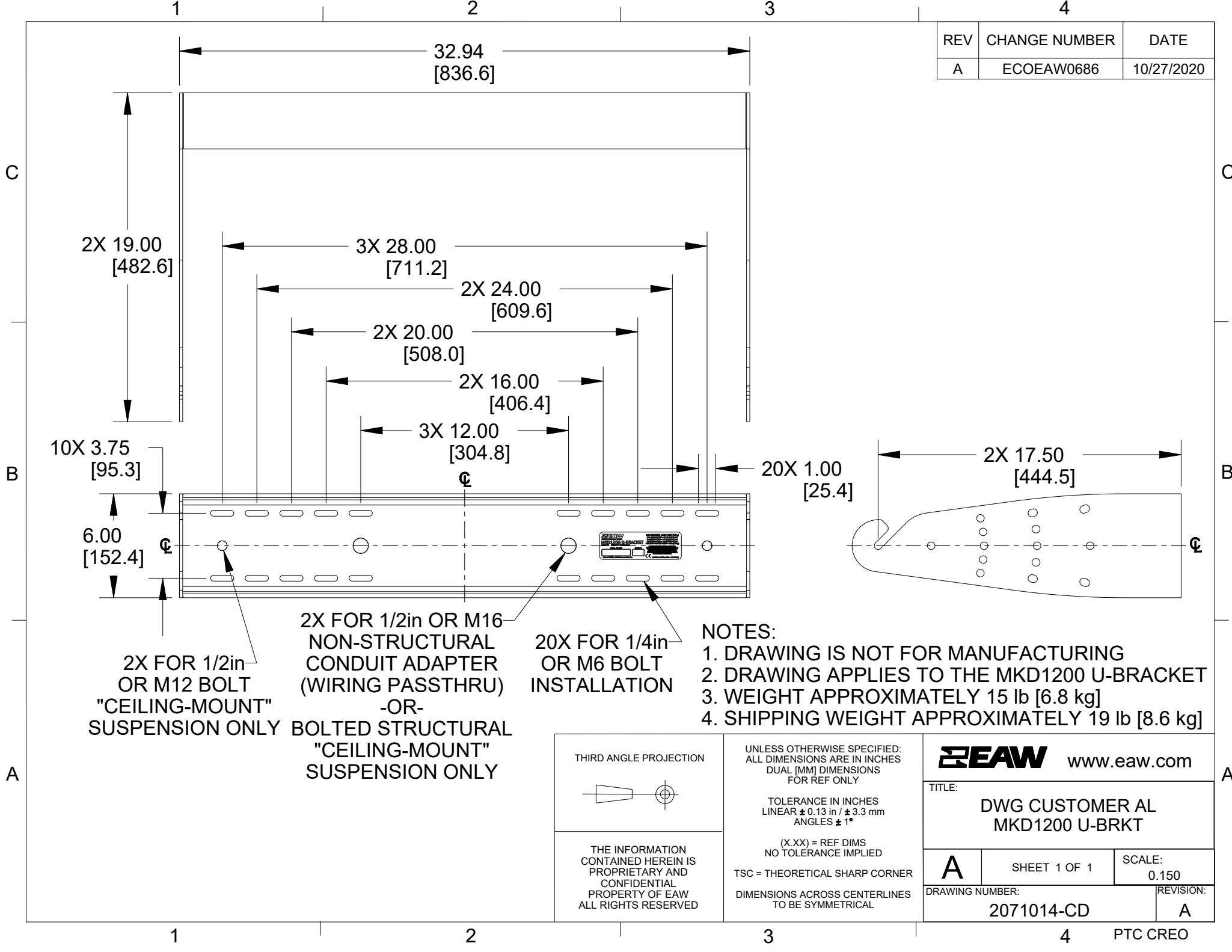


REV	CHANGE NUMBER	DATE
A	ECOEA0686	10/27/2020



- NOTES:**
1. DRAWING IS NOT FOR MANUFACTURING
 2. DRAWING APPLIES TO THE MKD1200 U-BRACKET
 3. WEIGHT APPROXIMATELY 15 lb [6.8 kg]
 4. SHIPPING WEIGHT APPROXIMATELY 19 lb [8.6 kg]

2X FOR 1/2in OR M16 NON-STRUCTURAL CONDUIT ADAPTER (WIRING PASSTHRU) -OR- BOLTED STRUCTURAL "CEILING-MOUNT" SUSPENSION ONLY

2X FOR 1/2in OR M12 BOLT "CEILING-MOUNT" SUSPENSION ONLY

20X FOR 1/4in OR M6 BOLT INSTALLATION

<p>THIRD ANGLE PROJECTION</p>	<p>UNLESS OTHERWISE SPECIFIED: ALL DIMENSIONS ARE IN INCHES DUAL [MM] DIMENSIONS FOR REF ONLY</p> <p>TOLERANCE IN INCHES LINEAR ± 0.13 in / ± 3.3 mm ANGLES $\pm 1^\circ$</p> <p>(X.XX) = REF DIMS NO TOLERANCE IMPLIED</p> <p>TSC = THEORETICAL SHARP CORNER</p> <p>DIMENSIONS ACROSS CENTERLINES TO BE SYMMETRICAL</p>	<p>EAW www.eaw.com</p> <p>TITLE: DWG CUSTOMER AL MKD1200 U-BRKT</p>
	<p>THE INFORMATION CONTAINED HEREIN IS PROPRIETARY AND CONFIDENTIAL PROPERTY OF EAW ALL RIGHTS RESERVED</p>	<p>A SHEET 1 OF 1 SCALE: 0.150</p> <p>DRAWING NUMBER: 2071014-CD</p> <p>REVISION: A</p>