

NT206L

2-Way Active 6" Line Array Loudspeaker



- ▶ Premium Performance Without the Heavy Weight
- ▶ Adjustable Horn for Customizable Horizontal Coverage
- ▶ Versatile accessories & deployment options
- ▶ Made by EAW in North American factory

OVERVIEW

The EAW NT206L is an ultra-compact, self-powered line array loudspeaker. Two 6.5-inch LF drivers with 2-inch voice coils and a 1.75-inch HF driver are brought to life by 1500 watts of power. NT206L plays loud (139dB), low (65-20kHz), and does it all in a premium Baltic birch and aluminum enclosure that weighs less (32lbs) than most passive, plastic enclosures in its class.

Designed for rapid deployment, NT206L provides a path to quick, reliable, and easy setup for the fast-paced productions where this class of product is commonly used. This is accomplished with proven analog amplifier input with onboard cabinet control without the need to lean on complex networked audio options.

The NT206L focus on simplicity of use does not translate to a lack of innovation. Breaking from the fixed horizontal coverage standards of nearly all line arrays available today, EAW's adjustable horn provides a fast path to symmetrical and asymmetrical horizontal coverage capabilities for your arrays. This customizable approach is easily implemented in the field with no tools or software required to do so. This ensures that NT206L is the fastest-to-deploy, most capable system in the Ultra-Compact category available today.

TECHNOLOGIES



Beamwidth Matched Crossovers By carefully selecting crossover topology to match the acoustic elements within the loudspeaker, beamwidth matched crossovers maintain smooth response across all frequencies in the crossover region.



Focusing™ compares the output of the loudspeaker system to its input. The resulting digital signal processing implemented corrects for any differences. This means the sound put into the loudspeaker is the same as the sound output.



DynO™ By monitoring the loudspeaker system as it reaches its performance limits, DynO uses digital signal processing to maximize output and fidelity.



Phase Aligned LF™ Tuned spacing of LF components to extend pattern control without the need for enormous horns.



Symmetry of Sources™ Symmetrical arrangement of acoustic sources along a common axis for utmost consistency throughout the coverage pattern.



Adjustable Horizontal Directivity™ AHD technology allows horizontal high-frequency dispersion to be adjusted to 80°, 110°, or asymmetrically to 95°.

TECHNICAL SPECIFICATIONS

2-WAY ACTIVE 6" LINE ARRAY LOUDSPEAKER

PERFORMANCE		
Max SPL ¹	139dB	
Operating Range ²	65Hz-20kHz	
Nominal Beamwidth ³	Horizontal: Narrow (80 degrees), Wide (110 degrees), Asymmetric (95 degrees left or right of center) Vertical: 10 degrees	
Nominal Phase	±15° from ideal high-pass filter	
CONFIGURATION		
LF Transducer	2x 6.5" woofers w/2"VC Vented	
HF Transducer	1 x 1-in exit, 1.75-in voice coil Compression Driver Adjustable Horizontal Directivity (AHD) Horn Loaded with Isophasic waveguide	
Crossover	1.2kHz	
Signal Processing	DSP with EAW Focusing™ and DynO™	
Modes	Flat, Boost	
ELECTRICAL		
Input Type	Electronically Balanced XLR	
Loop Type	Electronically Balanced XLR	
Max Input Level	+21dBu	
impedance	20 kOhm (balanced)	
Wiring	XLRF, Pin 1 chassis, pin 2+, pin 3- Separate loop-thru XLRM (for analog signal only)	
Amplifier	Type Class D Max Output LF / HF (Peak) 1000W/500W	
AC Mains (nominal)	Neutrik powerCON® TRUE1 TOP True Outdoor Protection connector 100/120V 60Hz or 230/240V 50Hz	
Power Consumption	Full	400W
	1/8th	120W
	Idle	50W
PHYSICAL		
Material	Baltic Birch Enclosure with Roadcoat 2-part polyurea	
Dimensions (H×W×D)	8.4in X 21.0in X 14.9in (213mm X 533mm X 379mm)	
Net Weight	32lbs (14.5kg)	
Shipping Weight	37lbs (16.8kg)	
ORDERING DATA		
Voltages	115V 230V	
NT206L (Black)	2072549-20 2072550-20	
Accessories		
EAW FLYbar NT206L (includes subwoofer mount, pole mount)	2072581-90	
EAW NT206L Pullback Kit	2072664-90	
EAW Cart NT206L (6x loudspeakers)	2072599-90	
EAW Cover Transport 6-stack NT206L	2072658	
EAW Cart Lid NT206L	2072641-90	

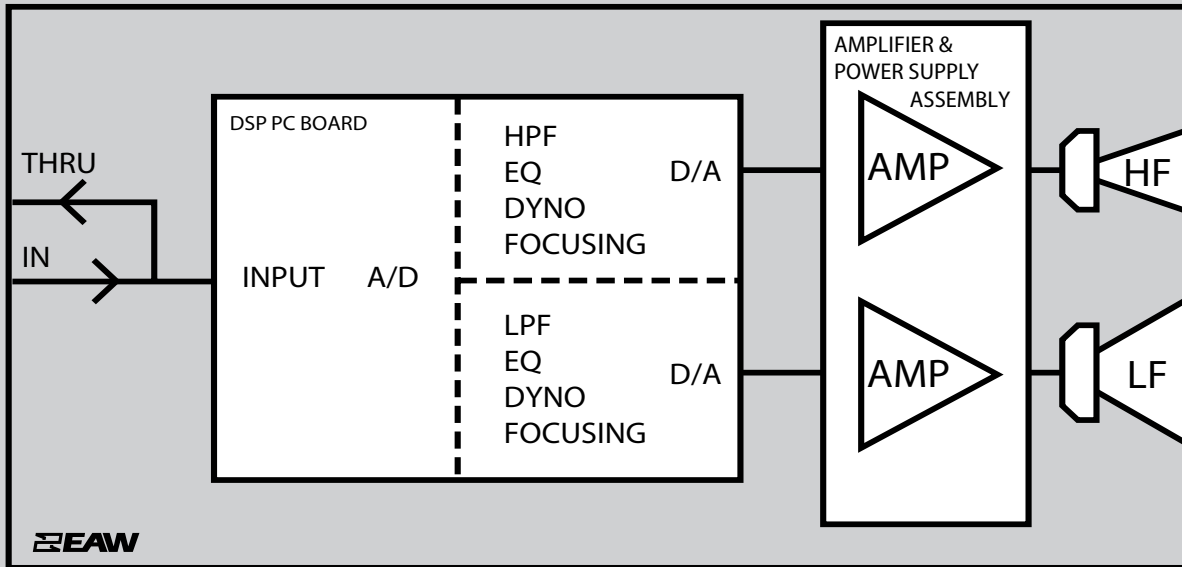
1 Calculated max SPL at 1m with 4:1 (12dB) crest factor pink noise. Specified as whole space (free field) for full range loudspeakers, half space for subwoofers.

2 Operating Range: Range where the processed Frequency Response stays within -10 dB SPL of the power averaged SPL within this range; measured on the geometric axis. Narrow band dips are excepted.

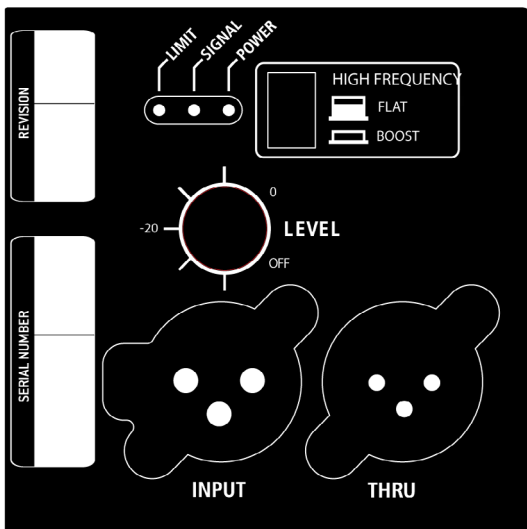
3 Nominal Beamwidth: Design angle for the -6 dB SPL points, referenced to 0 dB SPL as the highest level.

SIGNAL DIAGRAM

2-Way, Bi-Amp (LF, HF)



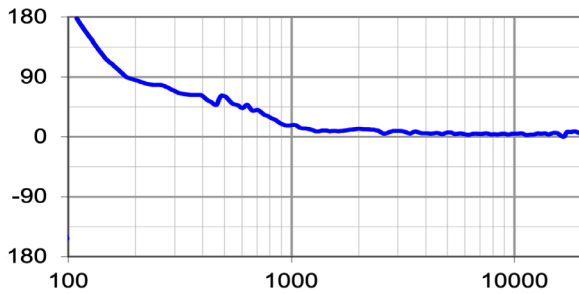
INPUT PANEL



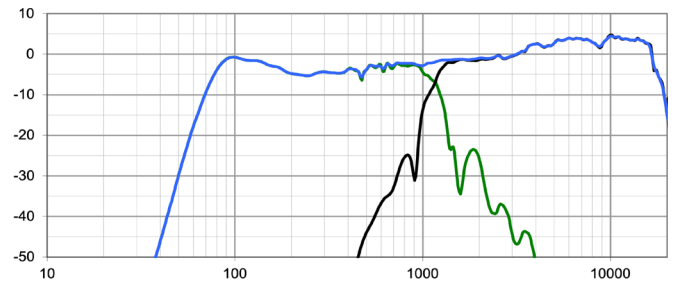
HPF	High Pass Filter for crossover –or– Recommended High Pass Filter
LPF	Low Pass Filter for crossover
LF/MF/HF	Low Frequency / Mid Frequency / High Frequency
AMP	User Supplied Power Amplifier –or– Integral Amplifier
XVR	Passive LPFs, HPFs, and EQ integral to the loudspeaker
EAW DynO™	Digital Signal Processor capable of implementing EAW DynO™ processing
EAW Focusing™	Digital Signal Processor capable of implementing EAW Focusing™

PERFORMANCE GRAPHS

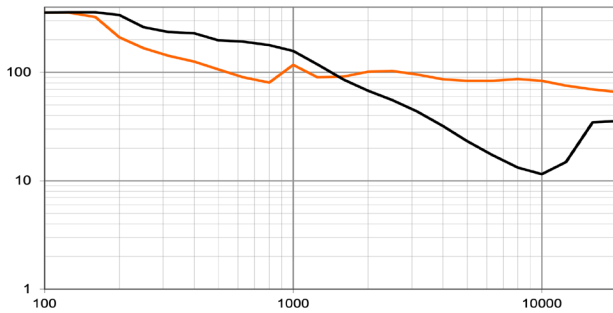
Phase Linearity



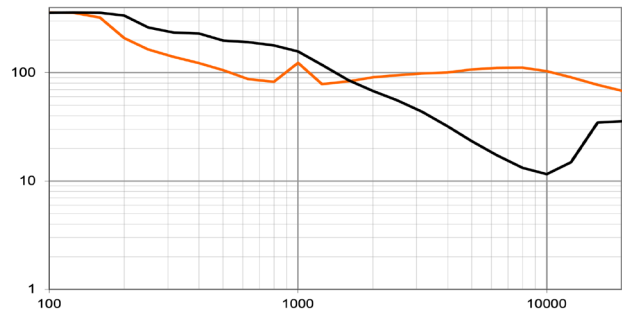
Frequency Response¹ ■=LF Processed ■=HF Processed ■=Overall Processed



Beamwidth² (80 degrees) ■=Horizontal ■=Vertical

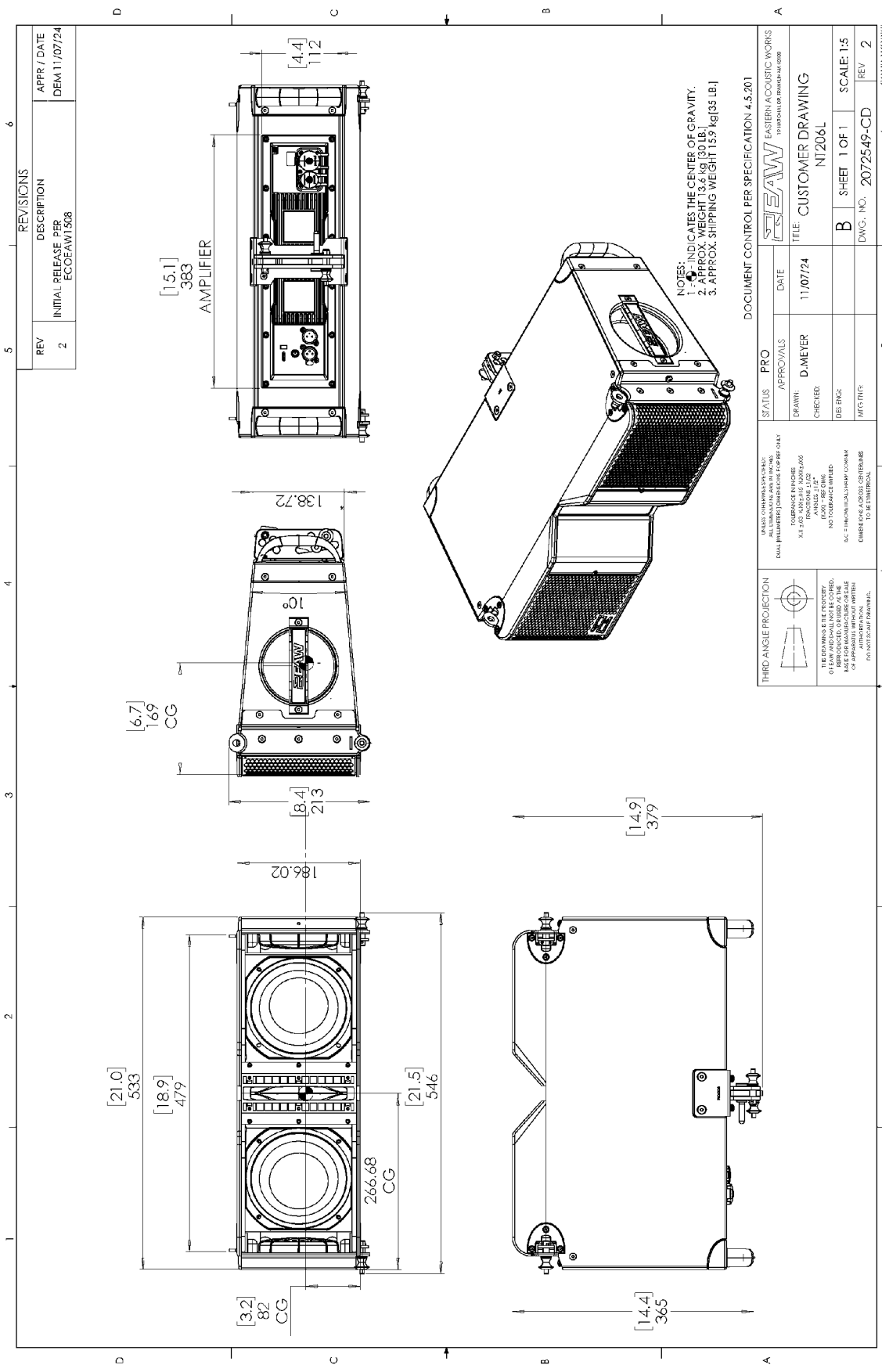


Beamwidth² (110 degrees) ■=Horizontal ■=Vertical



1 Variation in acoustic output level with frequency for a constant input signal. Processed: normalized to 0 dB SPL. Unprocessed inputs: 2 V (4 ohm nominal impedance), 2.83 V (8ohm nominal impedance), or 4 V (16 ohm nominal impedance) referenced to a distance of 1 m.

2 Average angle for each 1/3 octave frequency band where, starting from the rear of the loudspeaker, the output first reaches -6 dB SPL referenced to 0 dB SPL as the highest level. This method means the output may drop below -6 dB SPL within the beamwidth angle.



REVISIONS		APPR / DATE
REV	DESCRIPTION	DERM 11/07/24
2	INITIAL RELEASE PER ECCEAW1508	

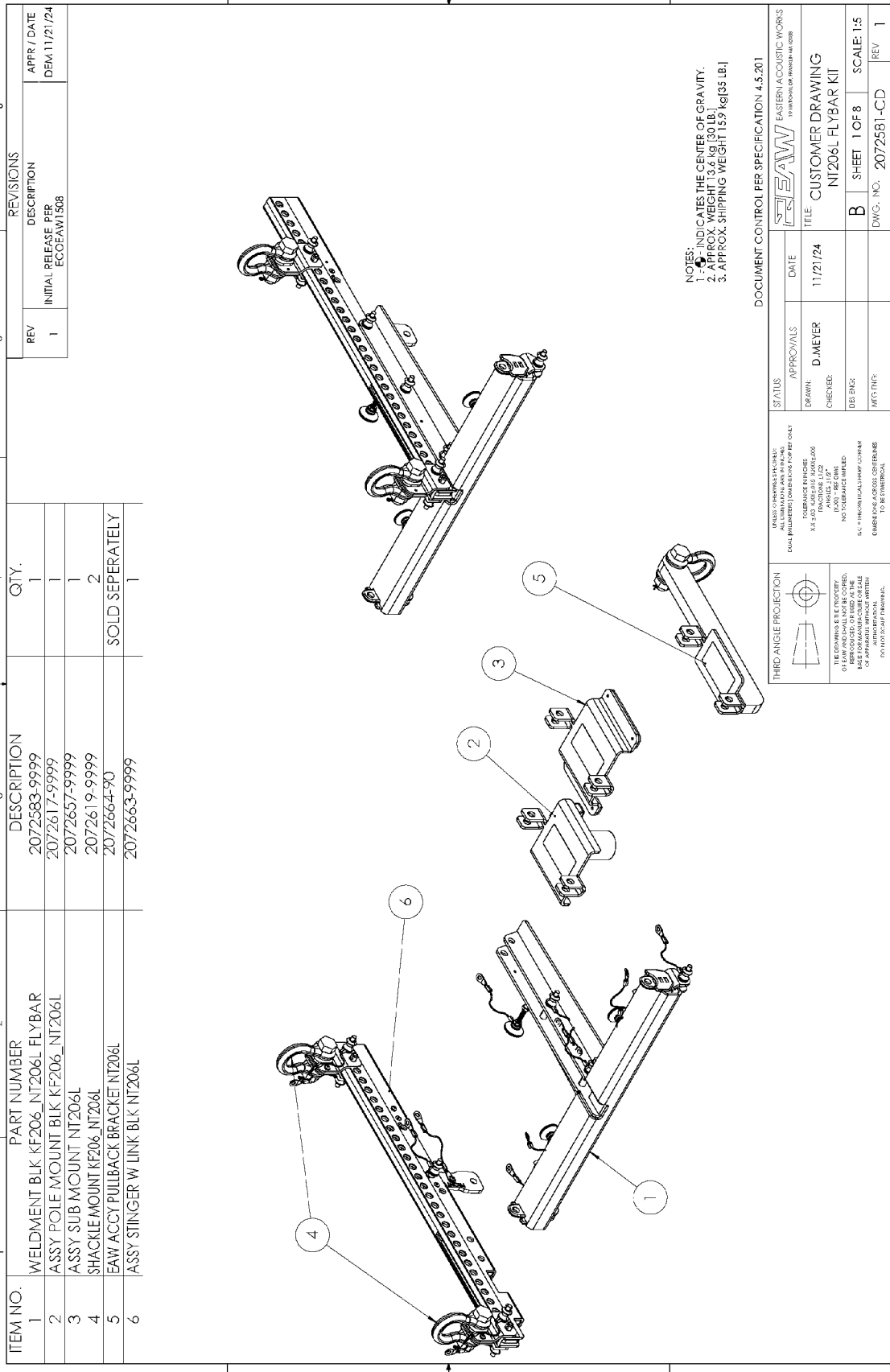
DOCUMENT CONTROL PER SPECIFICATION 4.5.201		EAW EASTERN ACOUSTIC WORKS TO INTERNAL OR EXTERNAL CUSTOMER	
STATUS	PRO	DATE	11/07/24
APPROVALS		TITLE	CUSTOMER DRAWING
DRAWN	D MEYER		NT206L
CHECKED		B	SHEET 1 OF 1
DES PNC		DWG. NO.	2072549-CD
INTG TRF		SCALE	1:5
		REV	2

THIRD ANGLE PROJECTION

ALL DIMENSIONS ARE IN MILLIMETERS UNLESS OTHERWISE SPECIFIED.
 DIMENSIONS IN PARENTHESES ARE PER FOLEY.
 ALL DIMENSIONS ARE TO FACE UNLESS OTHERWISE SPECIFIED.
 TOLERANCE FINISHES:
 H & J TO 0.100mm (0.004in) UNLESS OTHERWISE SPECIFIED.
 K TO 0.200mm (0.008in) UNLESS OTHERWISE SPECIFIED.
 ANGLE: 1:12"
 NO TOLERANCE IMPLIED.
 S.C. IF FROM MANUFACTURING CONTROL
 DIMENSIONS AND/OR CENTERLINES TO BE DIMENSIONAL.
 DIMENSIONS AND/OR CENTERLINES TO BE DIMENSIONAL.

THE COMPANY IS THE PROPRIETOR OF ALL RIGHTS AND SHALL NOT BE LIABLE FOR ANY DAMAGES OR LOSS OF PROFITS OR BUSINESS INTERRUPTIONS OF ANY KIND ARISING FROM THE USE OF THIS DRAWING OR ANY INFORMATION CONTAINED HEREIN.

2072549-CD (2) DRW CUSTOMER NT206L



REV	INITIAL	RELEASE PER	DESCRIPTION	APPR / DATE
1		ECOEAW1508		DEM 11/21/24

ITEM NO.	PART NUMBER	DESCRIPTION	QTY.
1	WELDMENT BLK KF206_NT206L FLYBAR	2072583-9999	1
2	ASSY POLE MOUNT BLK KF206_NT206L	2072617-9999	1
3	ASSY SUB MOUNT NT206L	2072657-9999	1
4	SHACKLE MOUNT KF206_NT206L	2072619-9999	2
5	EAW ACCY PULLBACK BRACKET NT206L	2072664-99	SOLD SEPERATELY
6	ASSY STINGER W LINK BLK NT206L	2072663-9999	1

NOTES:
 1. - INDICATES THE CENTER OF GRAVITY.
 2. APPROX. WEIGHT 13.6 kg (30 LB.)
 3. APPROX. SHIPPING WEIGHT 15.9 kg (35 LB.)

DOCUMENT CONTROL PER SPECIFICATION 4.5.201

STATUS		APPROVALS		DATE	
DRAWN:	D MEYER	CHECKED:		11/21/24	
DES. ENG:		DIS. ENG:			
INT. TRF:					

EAW EASTERN ACOUSTIC WORKS	
TITLE	CUSTOMER DRAWING
	NT206L FLYBAR KIT
SHEET	1 OF 8
SCALE	1:5
DWG. NO.	2072581-CD
REV	1

THIRD ANGLE PROJECTION

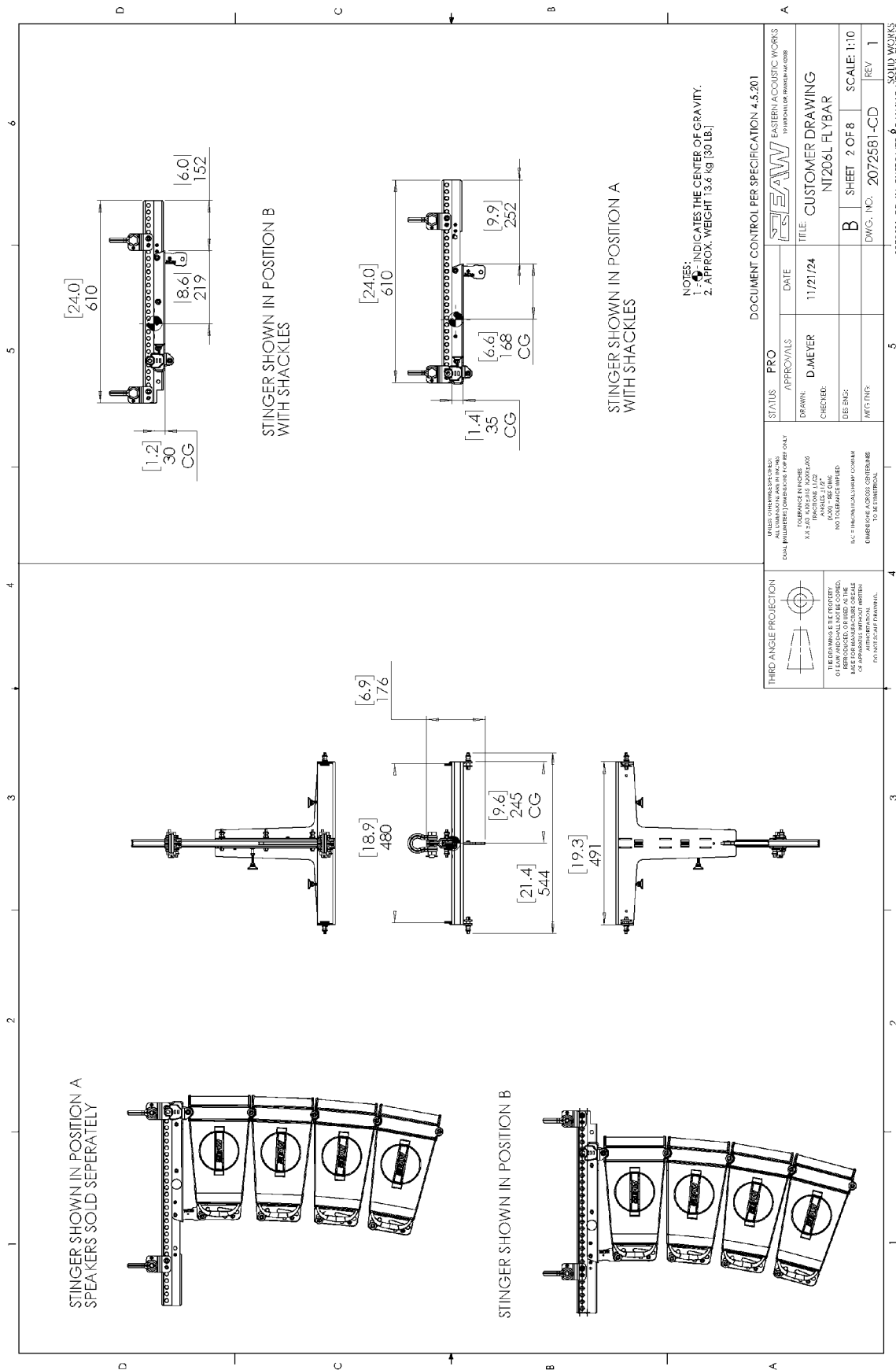
THE DRAWING IS THE PROPERTY OF EAW AND SHALL NOT BE COPIED, REPRODUCED, OR TRANSMITTED IN ANY FORM OR BY ANY MEANS, ELECTRONIC OR MECHANICAL, INCLUDING PHOTOCOPYING, RECORDING, OR BY ANY INFORMATION STORAGE AND RETRIEVAL SYSTEM, WITHOUT THE WRITTEN PERMISSION OF EAW.

ALL DIMENSIONS UNLESS OTHERWISE SPECIFIED ARE IN INCHES. DIMENSIONS IN PARENTHESES ARE IN MILLIMETERS. DIMENSIONS IN MILLIMETERS TAKE PRECEDENCE OVER DIMENSIONS IN INCHES.

TOLERANCE FINISHES:
 FRACTIONS: 1/32, 1/16, 1/8, 1/4, 3/8, 1/2, 5/8, 3/4, 7/8, 1
 DECIMALS: 0.005, 0.010, 0.015, 0.020, 0.030, 0.040, 0.050, 0.060, 0.070, 0.080, 0.090, 0.100, 0.150, 0.200, 0.300, 0.400, 0.500, 0.600, 0.700, 0.800, 0.900, 1.000

NO TOLERANCE SHARED.
 UNLESS OTHERWISE SPECIFIED, ALL DIMENSIONS ARE TO BE TAKEN TO THE CENTER OF GRAVITY.

2072381-CD (1) CUSTOMER DRAWING NT206L FLYBAR



NOTES:
 1. Ø - INDICATES THE CENTER OF GRAVITY.
 2. APPROX. WEIGHT 13.6 kg [30 lb.]

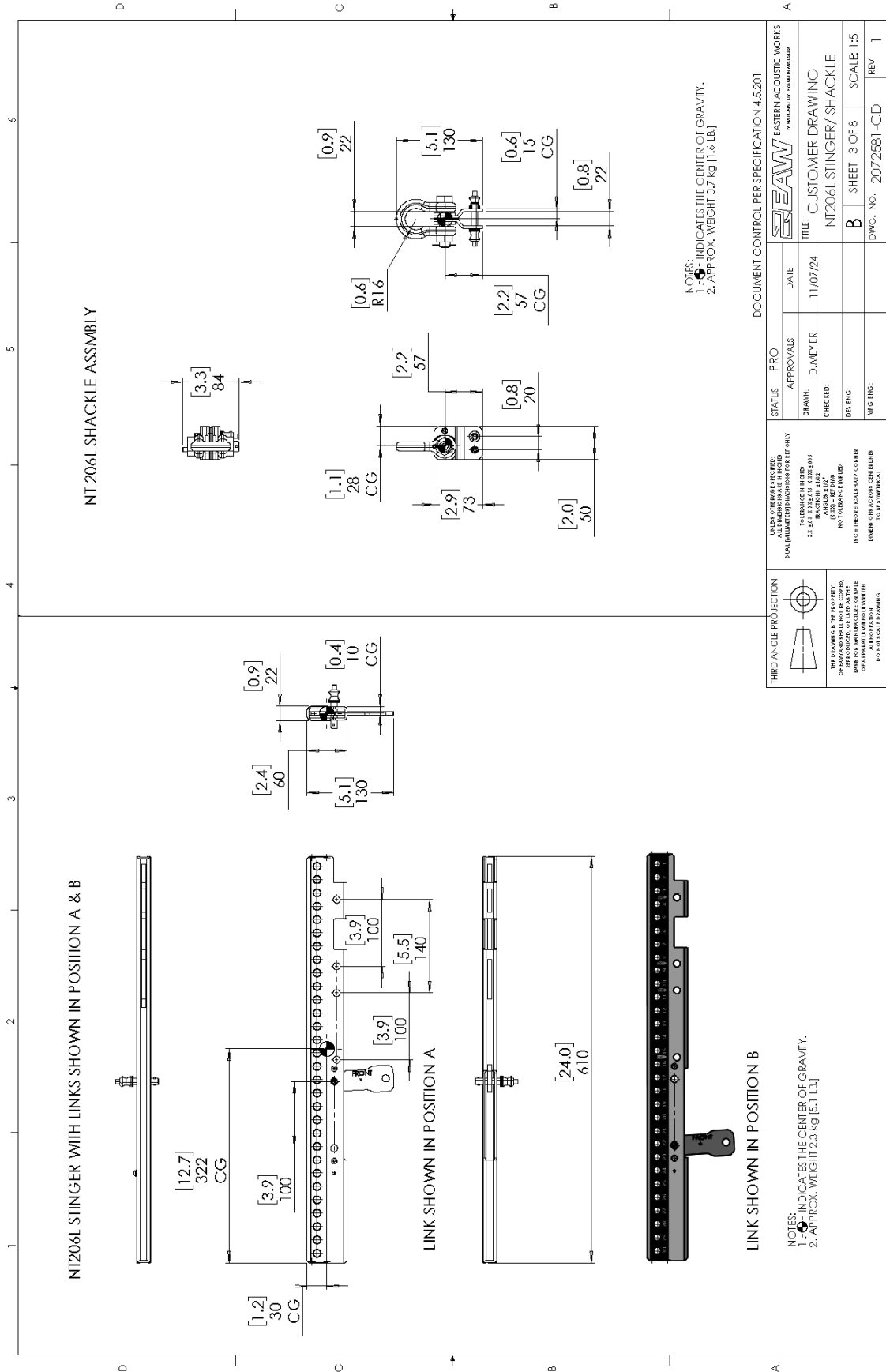
DOCUMENT CONTROL PER SPECIFICATION 4.5.201

STATUS		PRO	EASTERN ACOUSTIC WORKS	
APPROVALS	DATE	APPROVALS	TO BE FILLED OR REVISIONS	
DRAWN: D MEYER	11/21/24		TITLE: CUSTOMER DRAWING	
CHECKED:			NI206L FLYBAR	
DES. ENG:			SHEET: 2 OF 8	SCALE: 1:10
MFG. TRF:			DWG. NO.: 2072581-CD	REV: 1

2072581-CD (1) CUSTOMER DRAWING NI206L FLYBAR
 SOLID WORKS

THIRD ANGLE PROJECTION

THE COMPANY IS THE PROPRIETOR OF ALL RIGHTS RESERVED. ALL DIMENSIONS ARE IN INCHES UNLESS OTHERWISE SPECIFIED. DIMENSIONS IN PARENTHESIS ARE FOR INFORMATION ONLY. DIMENSIONS IN SQUARE BRACKETS ARE FOR INFORMATION ONLY. DIMENSIONS IN BRACKETS ARE FOR INFORMATION ONLY. DIMENSIONS IN BRACKETS ARE FOR INFORMATION ONLY. DIMENSIONS IN BRACKETS ARE FOR INFORMATION ONLY.



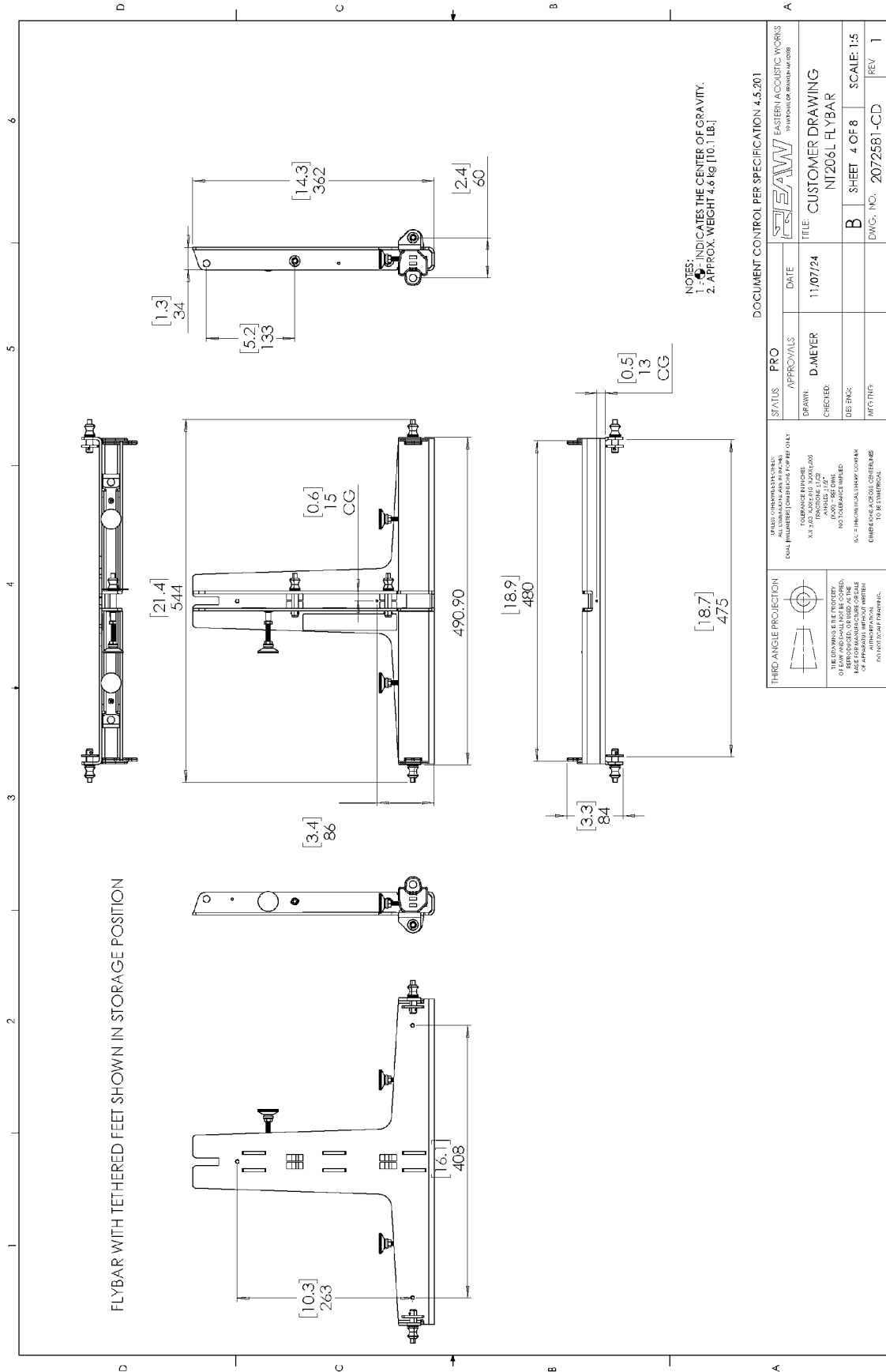
NOTES:
 1. INDICATES THE CENTER OF GRAVITY.
 2. APPROX. WEIGHT 0.7 kg [1.6 LB.]

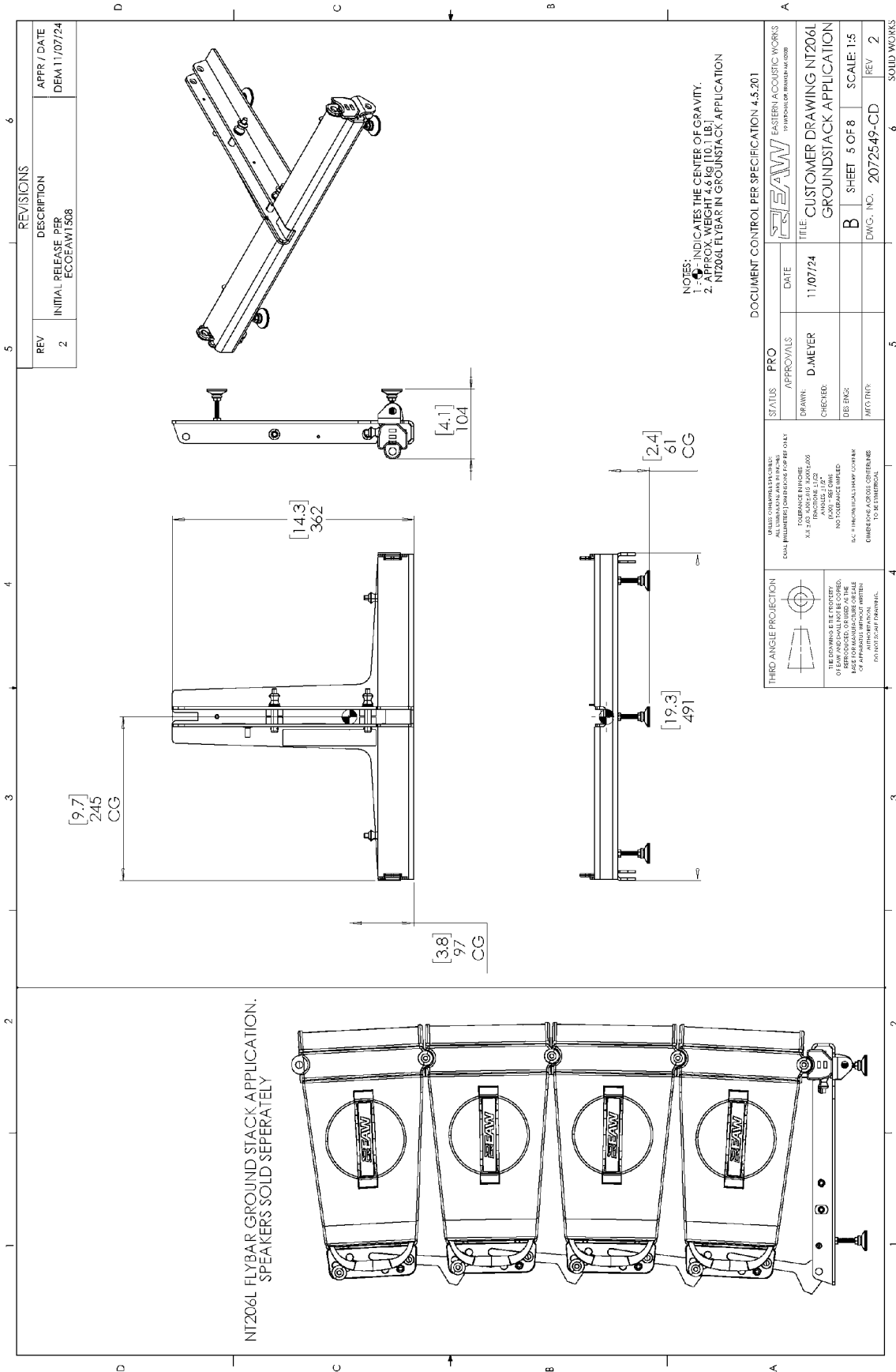
DOCUMENT CONTROL PER SPECIFICATION 4.5.201

EAW EASTERN ACOUSTIC WORKS BY APPOINTMENT TO THE ROYAL CANADIAN MOUNTED POLICE		STATUS	PRO	APPROVALS	DATE
DRAWN:	D. MEYER	CHECKED:	D. MEYER	DATE:	11/07/24
DESIGN:		DESIGN:		DATE:	
DATE:		DATE:		DATE:	
DWG. NO.:	2072581-CD	REV:	1		

THIRD ANGLE PROJECTION	UNITS AND DIMENSIONS	TOLERANCES	FINISHES	OTHER
	DUAL DIMENSIONS IN MILLIMETERS FOR REF ONLY ALL DIMENSIONS IN INCHES	TOLERANCE IN INCHES ± 0.005 INCHES ± 0.002 INCHES ± 0.001 INCHES	FINISHES NONE NO CLEANING REQUIRED NO COATING NO POLISHING NO ANODIZING NO SPECIAL TREATMENT NO SPECIAL FINISHES NO SPECIAL FINISHES NO SPECIAL FINISHES	OTHER NONE NO CLEANING REQUIRED NO COATING NO POLISHING NO ANODIZING NO SPECIAL TREATMENT NO SPECIAL FINISHES NO SPECIAL FINISHES NO SPECIAL FINISHES

2072581-CD (1) CUSTOMER DRAWING NT206L FLYBAR





REVISIONS		APPR / DATE
REV	DESCRIPTION	DEM 11/07/24
2	INITIAL RELEASE PER ESCOEAW1508	

DOCUMENT CONTROL PER SPECIFICATION 4.5.201

EAW EASTERN ACOUSTIC WORKS		TO: TECHNICAL DEPARTMENT	
STATUS	PRO	DATE	11/07/24
APPROVALS	D MEYER		
DRAWN		CHECKED	
DES INGS		DATE	
INTG INFS		DWG. NO.	2072549-CD
		REV	2

THIRD ANGLE PROJECTION

ALL DIMENSIONS IN MILLIMETERS UNLESS OTHERWISE SPECIFIED

DUAL DIMENSIONED DIMENSIONS REFER ONLY TO DIMENSIONS IN MILLIMETERS

TOLERANCE FINISHES:

- F3 ± 0.15
- F4 ± 0.20
- F5 ± 0.30
- F6 ± 0.40
- F7 ± 0.50
- F8 ± 0.63
- F9 ± 0.80
- F10 ± 1.00
- F11 ± 1.25
- F12 ± 1.60
- F13 ± 2.00
- F14 ± 2.50
- F15 ± 3.15
- F16 ± 4.00
- F17 ± 5.00
- F18 ± 6.30
- F19 ± 8.00
- F20 ± 10.00

NO TOLERANCE ENDED

ANGLES: 1:12"

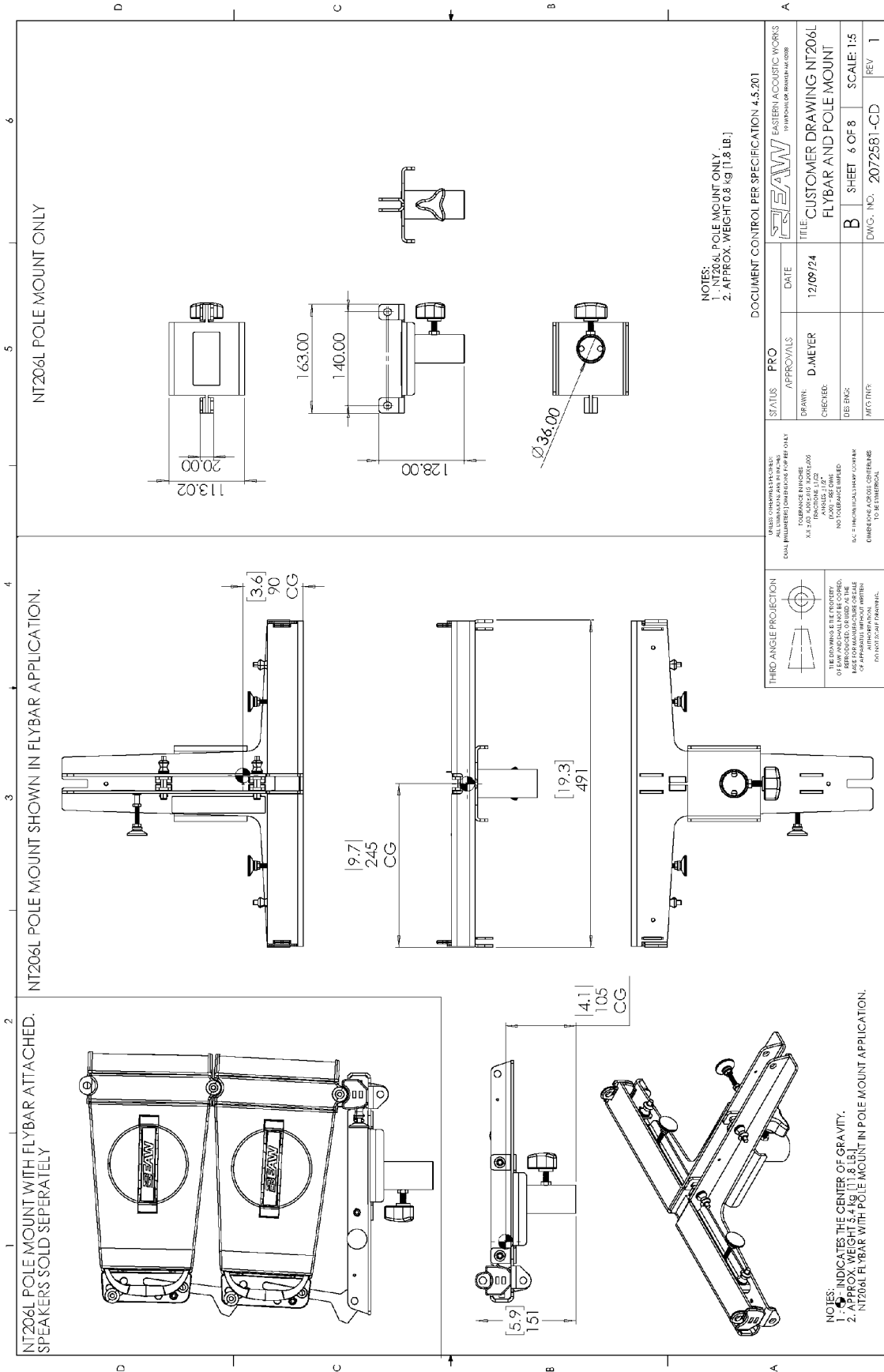
UNLESS OTHERWISE SPECIFIED, ALL DIMENSIONS ARE TO BE TAKEN FROM THE UNMOUNTED CONDITION

CONFORMANCE ADDRESS CORRECTIONS TO BE SUBMITTED TO: TECHNICAL

THE COMPANY IS THE PROPRIETOR OF ALL RIGHTS AND SHALL NOT BE LIABLE FOR ANY DAMAGES, INCLUDING CONSEQUENTIAL DAMAGES, ARISING OUT OF OR FROM THE USE OF ANY INFORMATION CONTAINED HEREIN OR THE INFORMATION OF ANY OTHER PARTY UNLESS OTHERWISE SPECIFICALLY STATED IN WRITING BY THE COMPANY.

TO: NOT TO BE REPRODUCED

2072549-CD (1) CUSTOMER DRAWING NT206L FLYBAR



NT206L POLE MOUNT ONLY

NT206L POLE MOUNT SHOWN IN FLYBAR APPLICATION.

NT206L POLE MOUNT WITH FLYBAR ATTACHED. SPEAKERS SOLD SEPARATELY

NOTES:
 1. NT206L POLE MOUNT ONLY.
 2. APPROX. WEIGHT 0.8 kg (1.8 LB.)

DOCUMENT CONTROL PER SPECIFICATION 4.5.201

STATUS	PRO	APPROVALS	DATE
DRAWN:	D-MEYER		12/09/24
CHECKED:			
DES. ENG:			
MFG. ENGR:			

ALL DIMENSIONS UNLESS OTHERWISE SPECIFIED ARE IN MILLIMETERS.
 DIMENSIONS IN PARENTHESES ARE FOR REFERENCE ONLY.
 DIMENSIONS IN BRACKETS ARE FOR REFERENCE ONLY.
 DIMENSIONS IN SQUARE BRACKETS ARE FOR REFERENCE ONLY.
 DIMENSIONS IN CIRCLES ARE FOR REFERENCE ONLY.
 DIMENSIONS IN DIAMETERS ARE FOR REFERENCE ONLY.
 DIMENSIONS IN SQUARE BRACKETS ARE FOR REFERENCE ONLY.
 DIMENSIONS IN CIRCLES ARE FOR REFERENCE ONLY.

THIRD ANGLE PROJECTION	DATE
	12/09/24

THE COMPANY IS NOT RESPONSIBLE FOR THE CONSTRUCTION OF ANY STRUCTURE OR EQUIPMENT BASED ON THIS DRAWING WITHOUT WRITTEN PERMISSION FROM THE COMPANY.

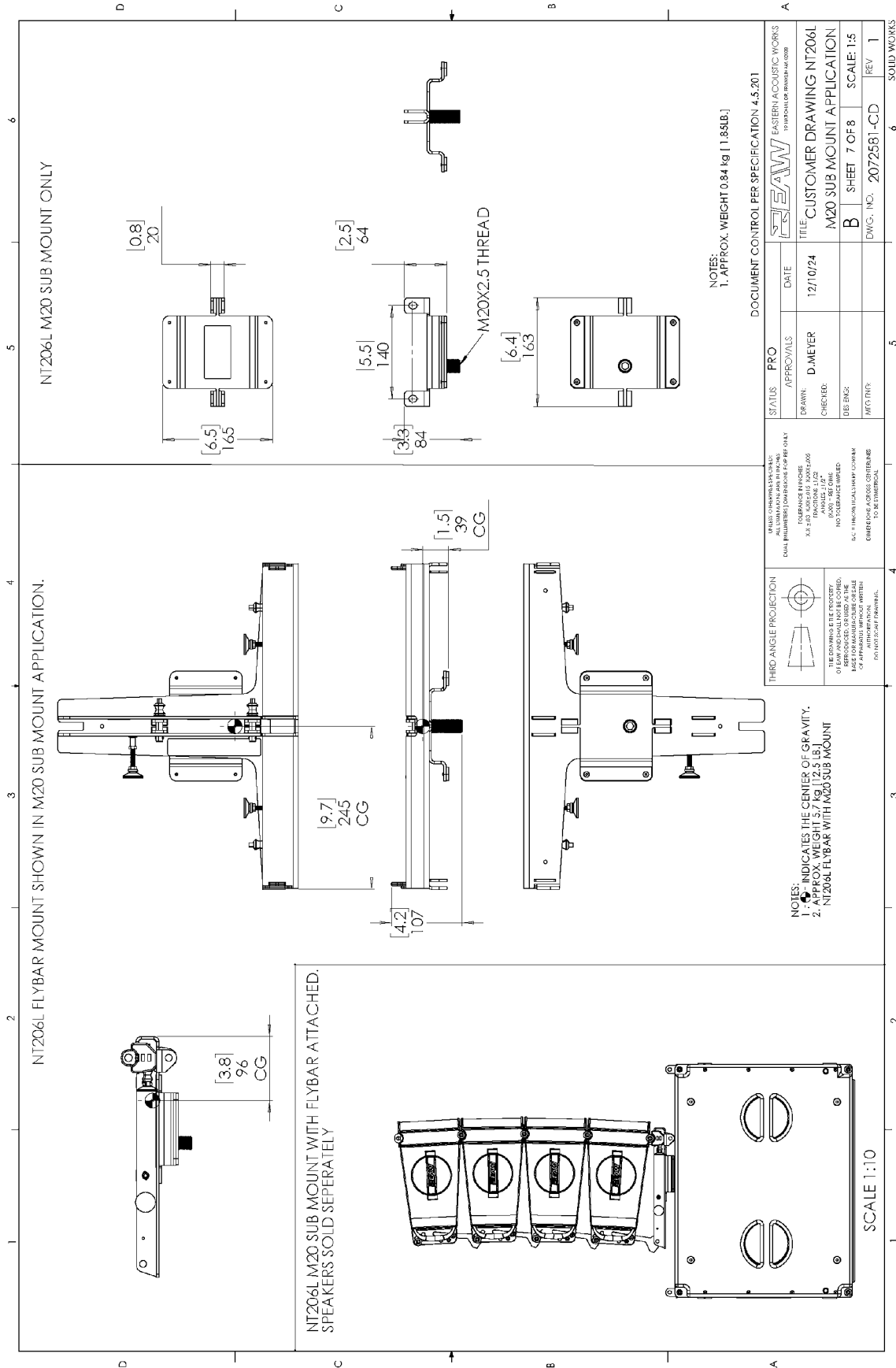
NOTES:
 1. CG INDICATES THE CENTER OF GRAVITY.
 2. APPROX. WEIGHT 5.4 kg (11.8 LB.)
 NT206L FLYBAR WITH POLE MOUNT IN POLE MOUNT APPLICATION.

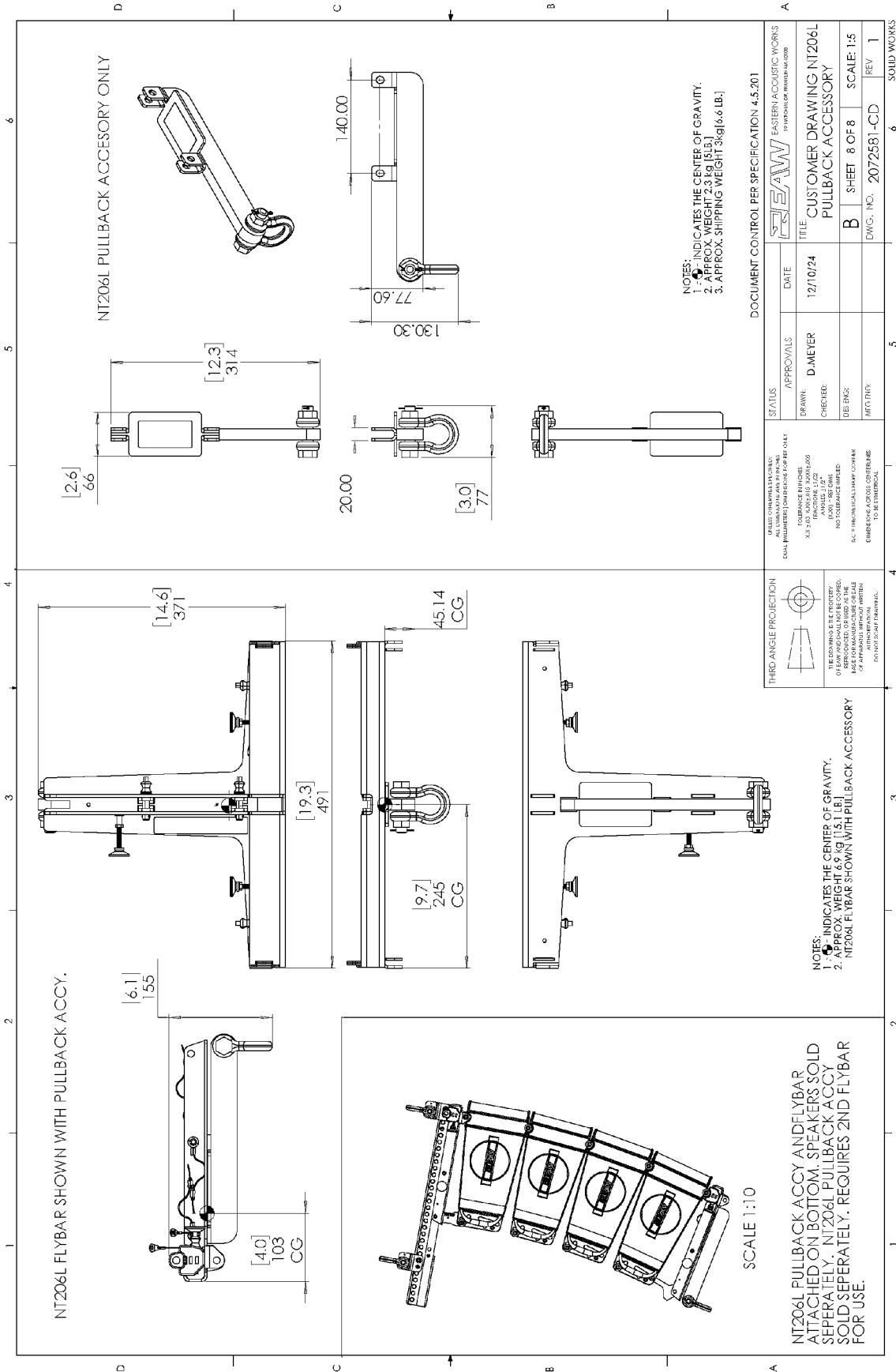
TITLE	DATE
CUSTOMER DRAWING NT206L FLYBAR AND POLE MOUNT	12/09/24

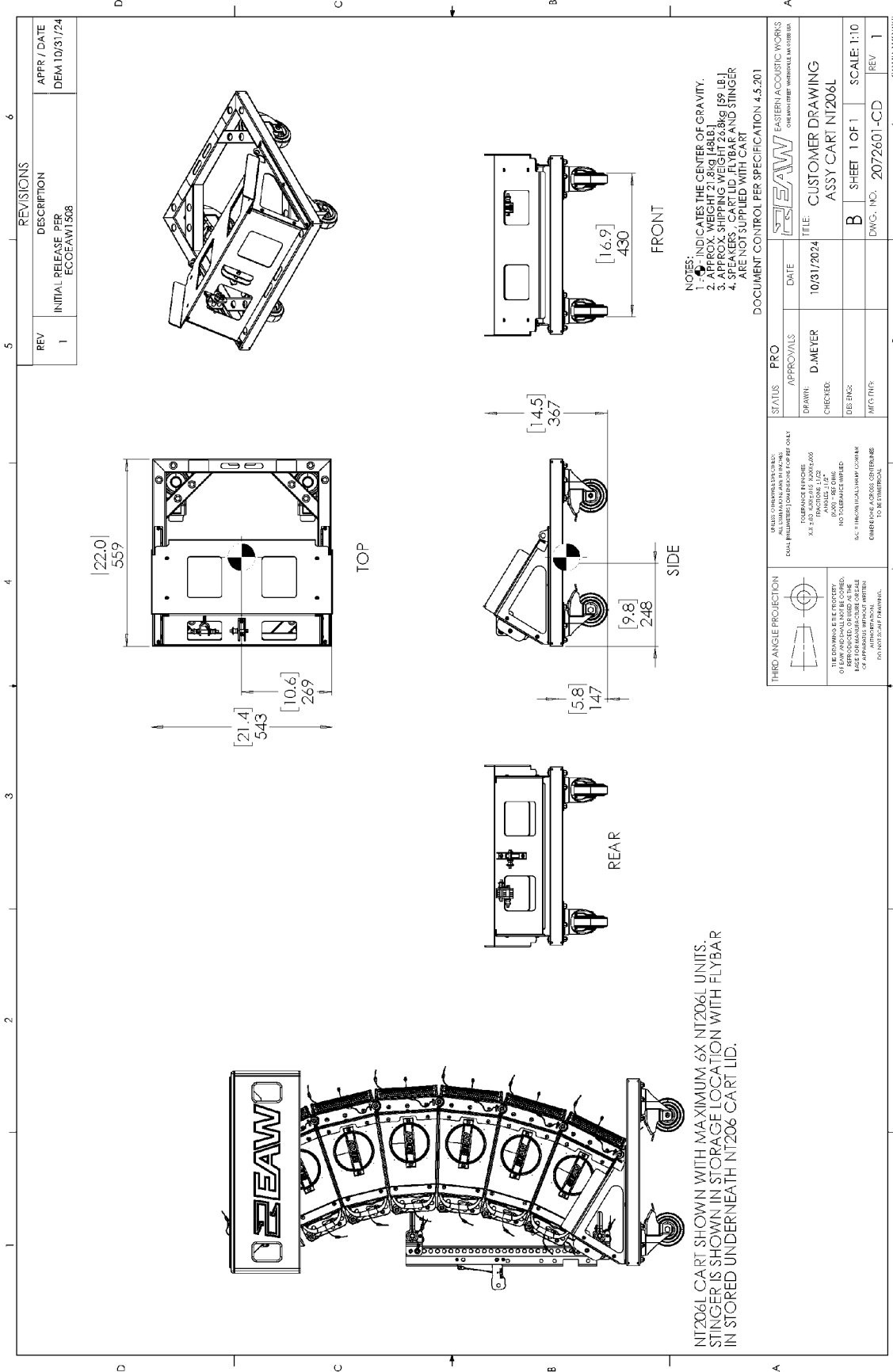
SHEET	SCALE
6 OF 8	1:5

DWG. NO.: 2072581-CD
 REV: 1

SOLID WORKS
 2072581-CD (1) CUSTOMER DRAWING NT206L FLYBAR







REVISIONS		APPR / DATE
REV	DESCRIPTION	
1	INITIAL RELEASE PER ESCOEAW1508	DEM 10/31/24

NOTES:
 1. ☉ - INDICATES THE CENTER OF GRAVITY.
 2. APPROX. WEIGHT 2.8KG (48LB).
 3. APPROX. SHIPPING WEIGHT 26.8KG (59.1LB).
 4. SPEAKERS, SHIPPING WHEELS AND STINGER ARE NOT SUPPLIED WITH CART.

STATUS		PRO		APPROVALS		DATE	
DRAWN:	D MEYER	DATE:	10/31/2024	TITLE:	CUSTOMER DRAWING	ASSY CART NT206L	
CHECKED:		DIS INGS:		SHEET:	1 OF 1	SCALE: 1:10	
DWG. NO.:	2072601-CD	REV:	1				

DOCUMENT CONTROL PER SPECIFICATION 4.5.201

THIRD ANGLE PROJECTION		TOLERANCE FINISHES		DIMENSIONS	
ASSEMBLY	ALL DIMENSIONS ARE IN MILLIMETERS	ASSEMBLY	ASSEMBLY	ASSEMBLY	ASSEMBLY
ALL DIMENSIONS ARE TO CENTER UNLESS OTHERWISE SPECIFIED		ASSEMBLY	ASSEMBLY	ASSEMBLY	ASSEMBLY
ALL DIMENSIONS ARE TO CENTER UNLESS OTHERWISE SPECIFIED		ASSEMBLY	ASSEMBLY	ASSEMBLY	ASSEMBLY
ALL DIMENSIONS ARE TO CENTER UNLESS OTHERWISE SPECIFIED		ASSEMBLY	ASSEMBLY	ASSEMBLY	ASSEMBLY

CONFORMANCE ADDRESS CORRECTIONS TO BE SUBMITTED.

NT206L CART SHOWN WITH MAXIMUM 6X NT206L UNITS. STINGER IS SHOWN IN STORAGE LOCATION WITH FLYBAR IN STORED UNDERNEATH NT206L CART LID.